

TRESBP ENVIRONMENTAL MONITORING SUMMARY

JANUARY 2012

OVERVIEW

In January, 2012:

- 25,253 m³ of sand was pumped to Snapper Rocks East.
- There were three media articles relating to the sinking of a fishing trawler attempting to cross the Tweed River entrance.
- Sea conditions were calm to average for the first half of the month with two minor ocean storms (17th and 26th) with waves up to 3m and intervening average to moderate seas (1.2-2 m) during the second half of the month.
- 1,501 vessel crossings were recorded for the month (this is about 22% less than the January average). The below average number of vessel crossings may be attributed to relatively rough sea conditions over the second half of the month at the Tweed River entrance, particularly during weekends and the public holiday period. Persistent rain and windy conditions over the month may also have been a contributing factor.
- The estimated amount of sand moving north towards the Tweed River Entrance by natural processes is in the order of 50,000 m³ (this is about 110% of the January average).
- Flooding of the Tweed River occurred during the last week of the month.

1. SAND PUMPING & DREDGING

Sand Delivery January 2012

| | |
|----------|-----------------------|
| Pumped: | 25,253 m ³ |
| Dredged: | 0 m ³ |
| Total: | 25,253 m ³ |

Sand Delivery January 2011

| | |
|----------|-----------------------|
| Pumped: | 35,722 m ³ |
| Dredged: | 0 m ³ |
| Total: | 35,722 m ³ |

Stage II Sand Delivery May 2000 to January 2012

| | |
|----------|--------------------------|
| Pumped: | 6,354,160 m ³ |
| Dredged: | 2,039,101 m ³ |
| Total: | 8,393,261 m ³ |



Department of **Environment**
and **Resource Management**

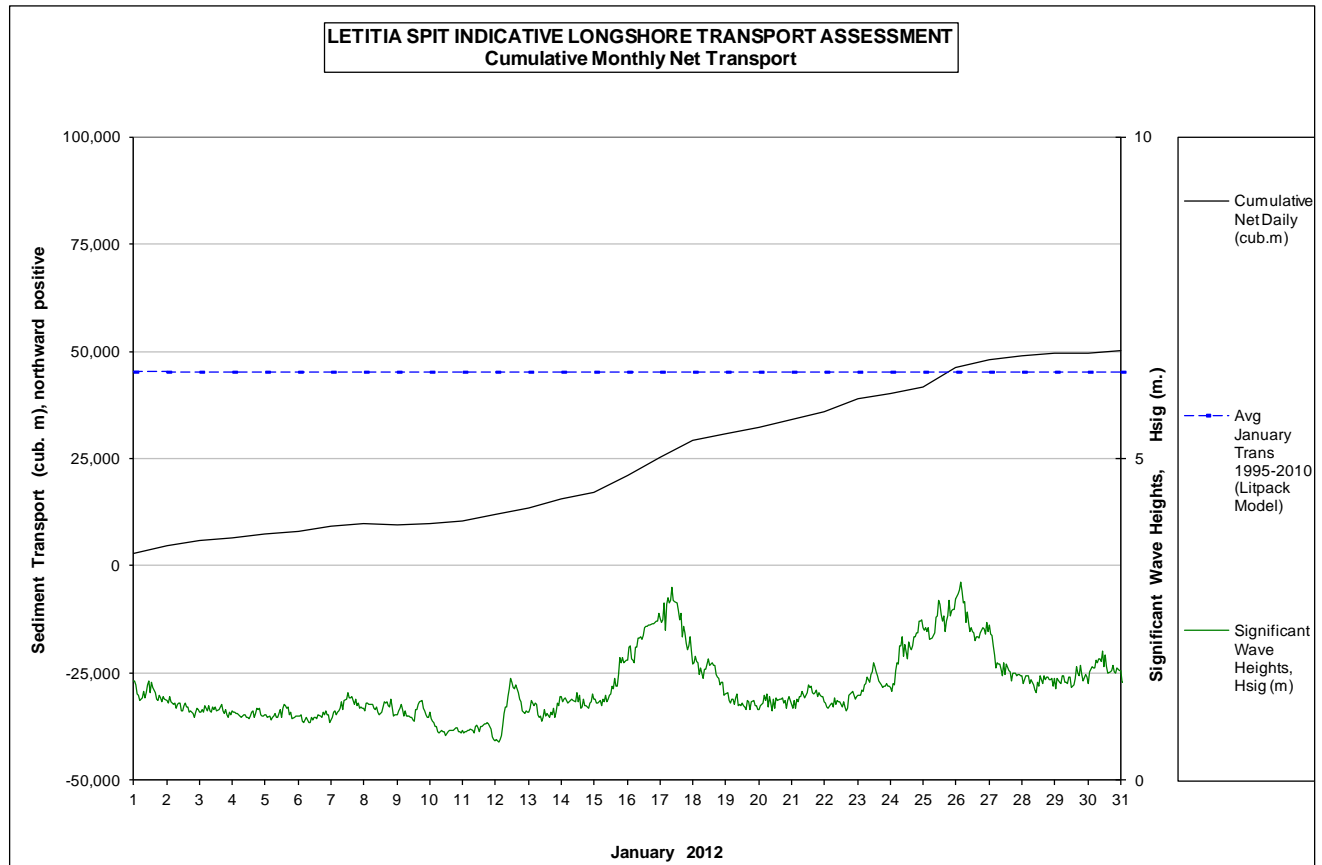


2. INDICATIVE LONGSHORE TRANSPORT

The graph below is based on simplified sediment transport modelling and is indicative only.

In January 2012 the estimated natural sand transport (moving N towards Tweed entrance): to be in the order of 50,000 m³.

This result is slightly above the average sand transport quantity for the month of December (ie about 110% of the average).



3. MEDIA COVERAGE

www.mydailynews.com.au, 30 January 2012: **Trawler hits rocks on Duranbah Beach**

"A fishing trawler has smashed into rocks at Duranbah Beach and sunk this afternoon.

The incident began unfolding about 5pm (NSW)."

ABC News, 31 January 2012: Experts probe trawler sinking

www.abc.net.au/news/2012-01-31/experts-probe-trawler-sinking/3801968?section.html

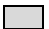
"Authorities will today examine the wreckage of a trawler that sank at Duranbah Beach in northern New South Wales.

The boat capsized at the entrance to the Tweed River yesterday afternoon, then drifted onto a breakwall."

www.goldcoast.com.au, 31 January 2012: **Trawler leaks fuel after hitting Tweed rocks**

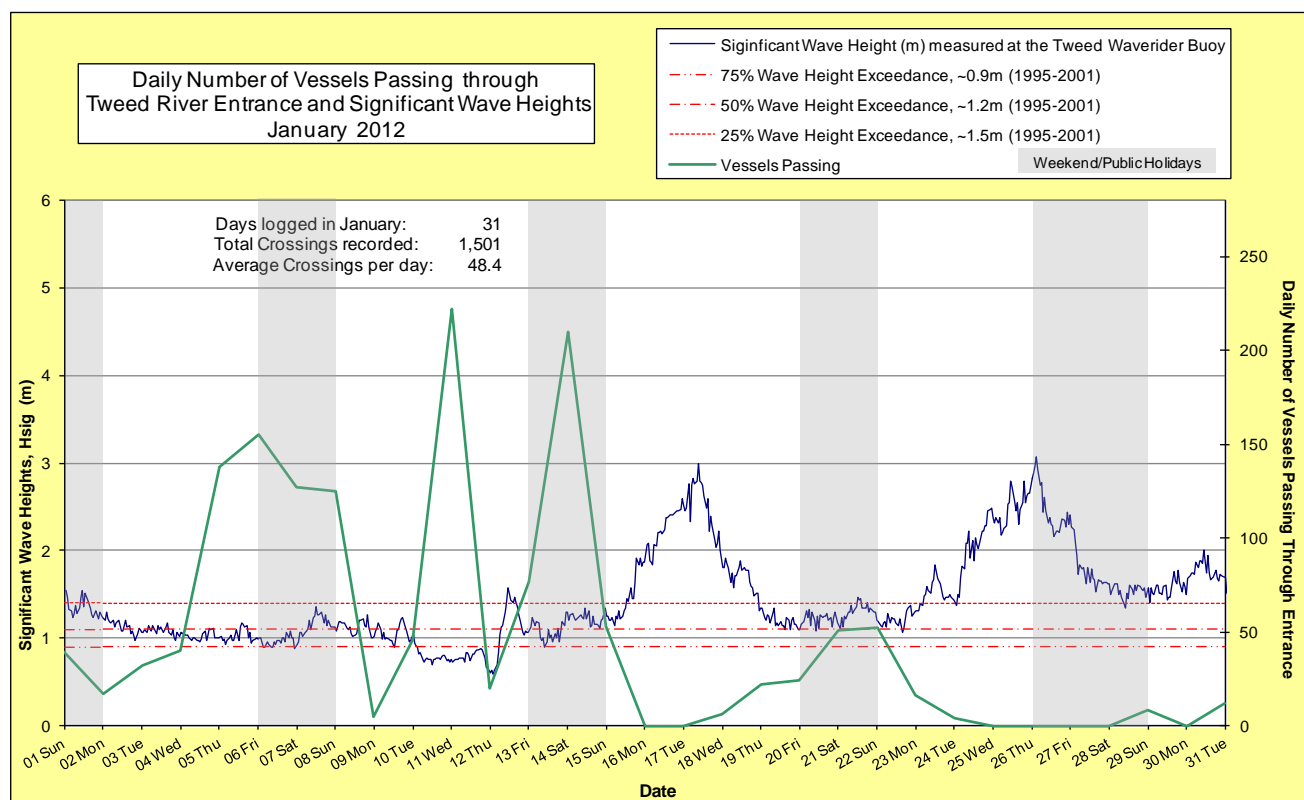
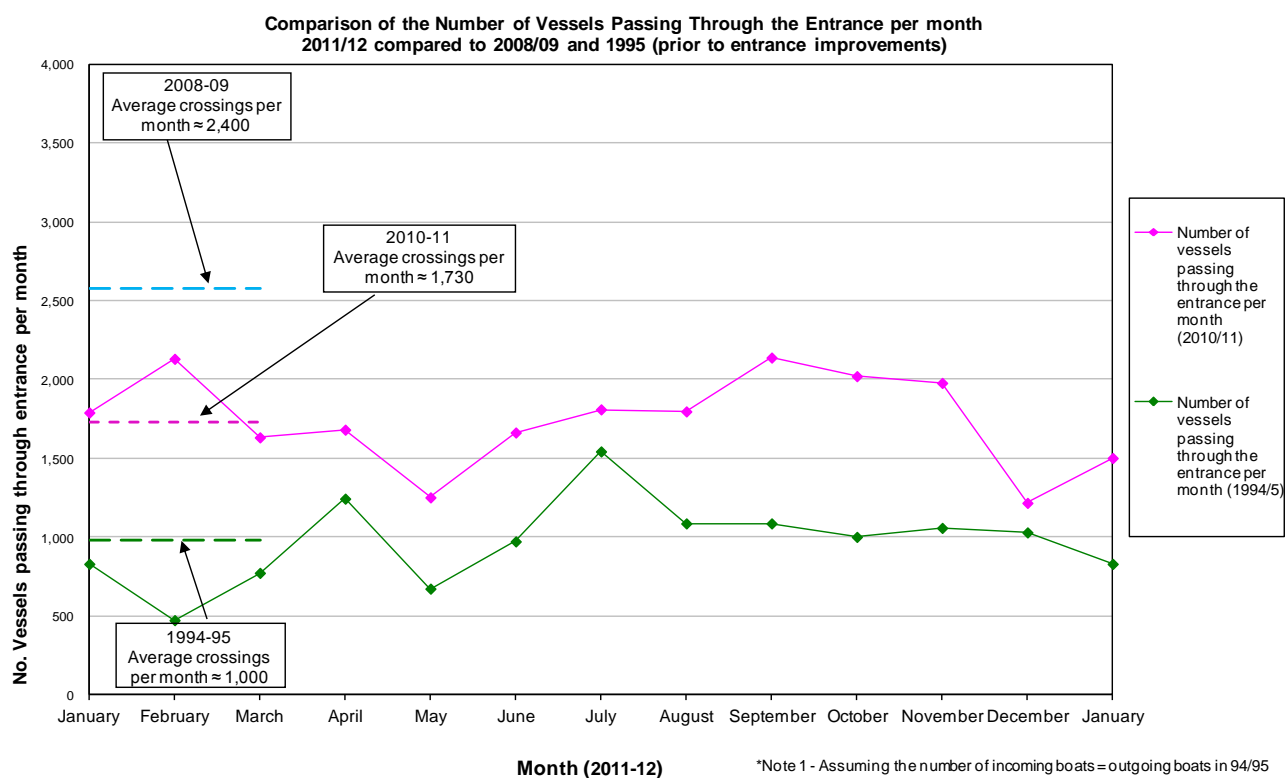
"A stricken trawler was left leaking thousands of litres of diesel into the ocean off Duranbah beach last night, with rough seas preventing authorities from getting close to the near submerged vessel.

Two men had a lucky escape when their 54ft vessel, Toni Kylie, attempted to cross the dangerous Tweed Bar about 5pm (NSW) yesterday."

4. TWEED RIVER ENTRANCE CONDITIONS**MARINE RESCUE NSW - MONITORING RESULTS**
 Weekends and public holidays

| Date | Navigation Rating Impassable-----Good | | | | | Number of Boats |
|------------------|--|-------------------------------|------------------------------------|---------------------------------|------------------------|-----------------|
| | Impassable (1) | Difficulty Encountered (2) | Some Difficulty Encountered (3) | Relatively Good Crossing (4) | Good Conditions (5) | |
| 1 st | | | | | | 39 |
| 2 nd | | | | | | 17 |
| 3 rd | | | | | | 32 |
| 4 th | | | | | | 40 |
| 5 th | | | | | | 138 |
| 6 th | | | | | | 155 |
| 7 th | | | | | | 127 |
| 8 th | | | | | | 125 |
| 9 th | | | | | | 5 |
| 10 th | | | | | | 46 |
| 11 th | | | | | | 222 |
| 12 th | | | | | | 20 |
| 13 th | | | | | | 77 |
| 14 th | | | | | | 210 |
| 15 th | | | | | | 53 |
| 16 th | | | | | | 0 |
| 17 th | | | | | | 0 |
| 18 th | | | | | | 6 |
| 19 th | | | | | | 22 |
| 20 th | | | | | | 24 |
| 21 st | | | | | | 51 |
| 22 nd | | | | | | 52 |
| 23 rd | | | | | | 16 |
| 24 th | | | | | | 4 |
| 25 th | | | | | | 0 |
| 26 th | | | | | | 0 |
| 27 th | | | | | | 0 |
| 28 th | | | | | | 0 |
| 29 th | | | | | | 8 |
| 30 th | | | | | | 0 |
| 31 st | | | | | | 12 |
| | | | | | Total | 1,501 |

Source: Marine Rescue NSW, Point Danger



5. WAVE & SURFING CONDITIONS

Dominant swell condition: Wave heights ranged from calm to average for most of the month (0.6 m to 1.5 m) and two minor ocean storms (17th & 26th) with waves to 3 m and intervening average to moderate seas (1.2-2 m) during second half of month..

Moderate sea events: 16th, 17th, 19th, 24th and 27th (with high seas on 18th, 25th and 26th) January.

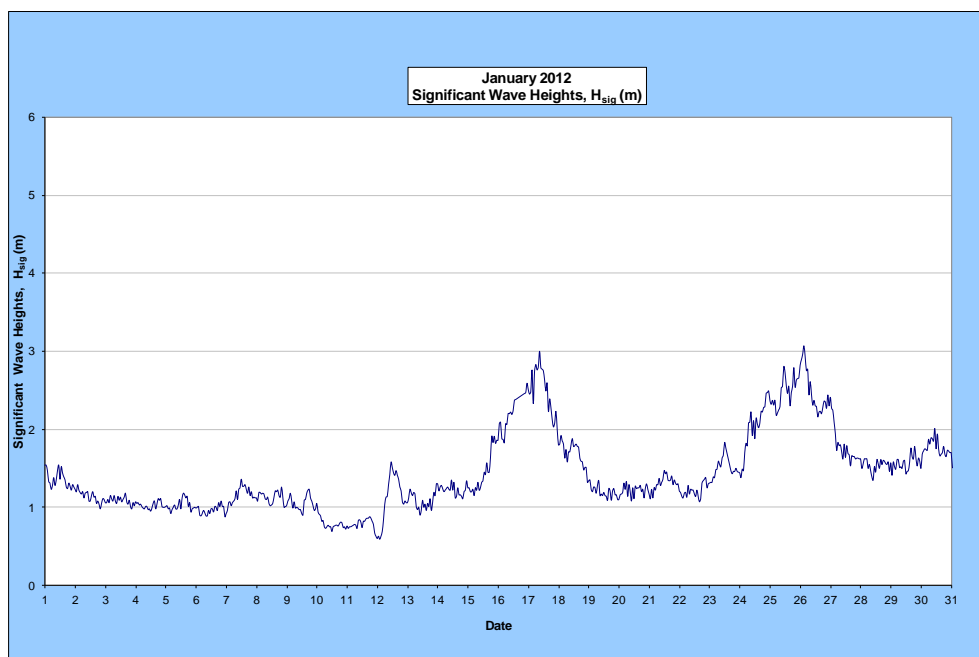
Monthly minimum significant wave height: 0.6 m on 12th January.

Monthly maximum significant wave height: 3.1 m on 26th January.

Number of days on which waves were below 1.0 m: 7 days

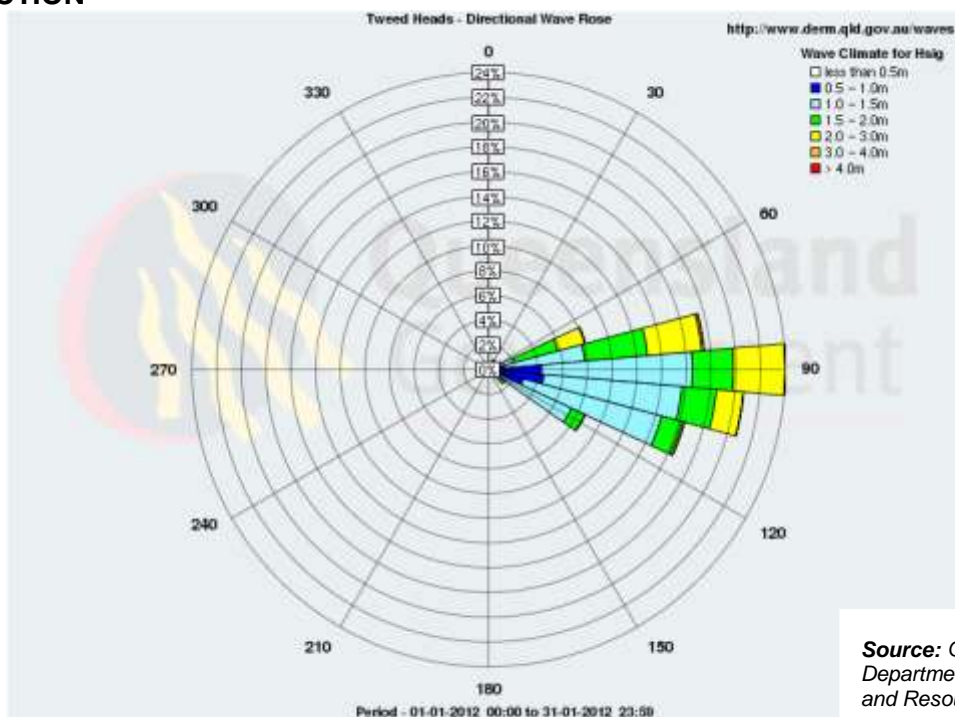
Number of days on which waves were above 2.0 m: 6 days

(Source: Tweed & Brisbane Wave Buoy; QDERM)



A link to data recorded by the Tweed Waverider Buoy is available at: <http://www.derm.qld.gov.au/waves>

WAVE DIRECTION



Source: Queensland
Department of Environment
and Resource Management

UPCOMING SURF AND SURF LIFESAVING EVENTS

- 2012 BLEACH – Surfing the Fringe, 11 to 26 February 2012, Gold Coast
- 2012 Kirra Teams Challenge, 17 to 19 February 2012, Gold Coast
- 2012 Quicksilver and Roxy Pro's, 25 February to 7 March 2012, Gold Coast
- 2012 International Student Surf Challenge, 17 to 18 March 2012, Gold Coast

PHOTOGRAPHS OF SURF CONDITIONS



Duranbah, 18 January 2012
(source: www.goldcoast.com.au)



Snapper Rocks, 18 January 2012
(source: www.goldcoast.com.au)



Frog's Beach, 18 January 2012
(source: www.goldcoast.com.au)



Snapper Rocks, 18 January 2012
(source: www.goldcoast.com.au)

SURF REPORT OVERVIEW

| DATE | SURF | DIRECTION | REPORT |
|------|-----------|-----------|--|
| 1 | 0.6m+ | SE | D'bah is attracting a little more of the SE swell however the low tide is keeping things straight. The points are ok for some tiny turns though, try from Snapper to Coolangatta. |
| 2 | 0.6m+ | SE | The run of small waves continues and long waits for the occasional 0.9m set. D'bah is attracting more of the SE swell. The points have some small ones, try from Rainbow to Coolangatta. D'bah is bigger with a crew on it early. |
| 3 | 0.6m | SE | More of the same as the run of small waves continues with 0.6m of SE swell. D'bah is attracting a more of the SE swell and at around 0.9m. Try from Rainbow to Coolangatta. D'bah is bigger. |
| 4 | 0.3-0.6m | SE | D'bah is picking up a bit more of the SE swell. They are the pick early with very small ones on the Gold Coast points on the dropping tide before the onshore winds get up. |
| 5 | 0.3-0.6m | E | Small weak E swell is 0.3-0.6m max. There is not much to get excited about, just small ones all along the coast early on high tide before the winds go onshore. |
| 6 | 0.6m | E | A good looking morning with a clean 0.6m E swell. Small fun beachies all along the coast early, then the points as the tide drops before the winds go onshore. |
| 7 | 0.3-0.6m | E | It's only 0.3-0.6m buried under a high tide this morning. Small beachies at D'bah. |
| 8 | 0.3-0.6m | ESE | It's only 0.3-0.6m max on the more open beaches and buried under a high tide. Small beachies at D'bah. |
| 9 | 0.6-0.9m | ENE | It's 0.6m up to 0.9m on the odd sets. |
| 10 | 0.3-0.6m | ENE | Pretty small and weak this morning with 0.3-0.6m of ENE swell. Try the southern pockets early, then the northern corners for some peaky tiny turns. |
| 11 | 0.3m | E | Small but clean waves up and down the Coast this morning with 0.3m of weak Easterly swell. |
| 12 | 0.3m | ESE | A cool S change has pushed through and the swell is tiny at 0.3m max from the ESE this morning. |
| 13 | 0.3-0.6m | SE | The swell is from the SE at around 0.3-0.6m There are small ones on the Gold Coast points but, D'bah has more size. |
| 14 | 0.6m | E | Clean conditions this morning with up to 0.6m of Easterly swell on the sets |
| 15 | 0.6m | ESE | Clean ocean conditions. We've got up to 0.6m of ESE swell. Check Cooly for some clean beachies and tiny point peelers while the wind is from the S. |
| 16 | 0.6-0.9m | ESE | ESE swell is messy at around the 0.6-0.9m mark with bigger sets. There is not a lot of quality about, just wind affected waves on the points with from Rainbow to Coolangatta. |
| 17 | 0.9-1.2m | ESE | Stormy and messy with rain and a gale force wind warning for later in the day. ESE swell that's sloppy at around the 0.9-1.2m mark with bigger sets. There is no quality about with the open beaches very messed up. Rainbow to Coolangatta by far the pick of a poor lot. |
| 18 | 0.9m+ | ESE | Around 0.9m of ESE swell, that's still a bit messy with bigger ones on the S facing beaches. There's still a lot of water moving around with the points on the dropping tide the cleanest option with from Rainbow to Coolangatta the pick. |
| 19 | 0.6-0.9m+ | ESE | It's a good looking morning with some fun waves about. The swell is clean at around 0.6-0.9m with the odd bigger sets. D'bah and the S end beachies are looking good and as the tide drops during the morning the points will be fun also. |
| 20 | 0.6m | ESE | The ESE swell has dropped more and is clean at around 0.6m with the odd bigger sets on the more open beaches. D'bah and the S end beachies have some small ones with small ones on the points. The Billabong World Junior trails are on at Burleigh. |
| 21 | 0.6m | ESE | Very similar to yesterday with an ESE swell that is around 0.6m with the bigger sets on the more open beaches. D'bah has a bit more size and there are fun ones on the S end beachies early also. The Billabong World Junior Titles are on at Burleigh. |
| 22 | 0.6m | ESE | More of the same with overcast skies and an ESE swell that is around 0.6m with the bigger sets on the more open beaches. |
| 23 | 0.3-0.6m | ESE | Overcast with showers and an ESE swell that is around 0.3-0.6m and a bit uneven with the bigger sets on the more open beaches. D'bah has a bit more size but is messy and there are smaller ones on the S end beachies early also. |
| 24 | 0.9m | ESE | In one word, Yuk. |
| 25 | 1.2-1.5m | E | Appalling conditions with onshore ENE winds, heavy rain squalls and a very messy E swell that's in the 1.2-1.5m range on the sets. Just forget it today. If you're desperate, try from Snapper to Coolangatta. |
| 26 | 1.2-1.5m | ENE | The heavy rain has stopped and the winds are very light early with a messy ENE swell that's in the 1.2-1.5m range on the sets. The water is very dirty around the river and creek mouths from the run off of the heavy rain and flooding. Too messy for the open beaches. If you're desperate, try the points with from Snapper to Kirra the pick. |

TRESBP ENVIRONMENTAL MONITORING SUMMARY – JANUARY 2012

| | | | |
|----|----------|-----|---|
| 27 | 1.2m | E | Heavy rain with onshore winds from the ESE to ENE and a messy E swell that's in the 1.2m range. The water is very dirty from the run off of the heavy rain and flooding. If you're desperate, try the points with from Snapper to Kirra the pick. |
| 28 | 0.9m | ENE | E winds and a messy ENE swell that is in the 0.9m range. The water is very dirty from the run off of the heavy rain and flooding. It's too messy for the open beaches and is not very inviting at all. If you're desperate, try the points with from Snapper to Kirra the pick. |
| 29 | 0.6-0.9m | ENE | It's still looking very ugly, overcast with showers and onshore ESE winds with a messy ENE swell that is in the 0.6-0.9m range. The water is still very dirty from the run off of the heavy rain and flooding. It's way too messy for the open beaches and is not very inviting at all. If you're desperate, try the points with from Snapper to Coolangatta the pick of a very poor lot. |
| 30 | 0.6-0.9m | E | The bad run continues. Very ugly, overcast with showers and fresh onshore N winds up early with a messy E swell that is in the 0.6m up to 0.9m range. The water is still very dirty from the run off of the heavy rain and flooding. Give it a miss today, it's way too messy and is not very inviting at all. |

Source: CoastalWatch Surf Report

Generally, January experienced calm to average waves for the first half of the month (0.6 to 1.5 m), and average to high seas over the second half of the month (with waves up to 3 m).

END