

# TRESBP ENVIRONMENTAL MONITORING SUMMARY

## MAY 2011

### OVERVIEW

In May, 2011:

- 24,674 m<sup>3</sup> of sand was pumped to Duranbah Beach and 27,031 m<sup>3</sup> of sand was pumped to Snapper Rocks East (total of 51,705 m<sup>3</sup>).
- There were no media articles referring to the project.
- Sea conditions were calm to moderate with significant wave heights of 0.6 to 2.6 m.
- 1,251 boats crossings were recorded for the month (this is about 40% fewer than the May average).
- The estimated amount of sand moving north towards the Tweed River Entrance by natural processes in the order of 76,000 to 79,000 m<sup>3</sup> (this is about 110% of the May average).

### 1. SAND PUMPING & DREDGING

#### **Sand Delivery May 2011**

Pumped:	51,705 m <sup>3</sup>
Dredged:	0 m <sup>3</sup>
Total:	51,705 m <sup>3</sup>

#### **Sand Delivery January to May 2011 (YTD)**

Pumped:	213,146 m <sup>3</sup>
Dredged:	0 m <sup>3</sup>
Total:	213,146 m <sup>3</sup>

#### **Sand Delivery January to May 2010**

Pumped:	190,678 m <sup>3</sup>
Dredged:	0 m <sup>3</sup>
Total:	190,678 m <sup>3</sup>

#### **Stage II Sand Delivery May 2000 to May 2011**

Pumped:	6,023,884 m <sup>3</sup>
Dredged:	2,038,900 m <sup>3</sup>
Total:	8,062,784 m <sup>3</sup>



CROWN LANDS DIVISION

Department of **Environment**  
and **Resource Management**



Queensland Government

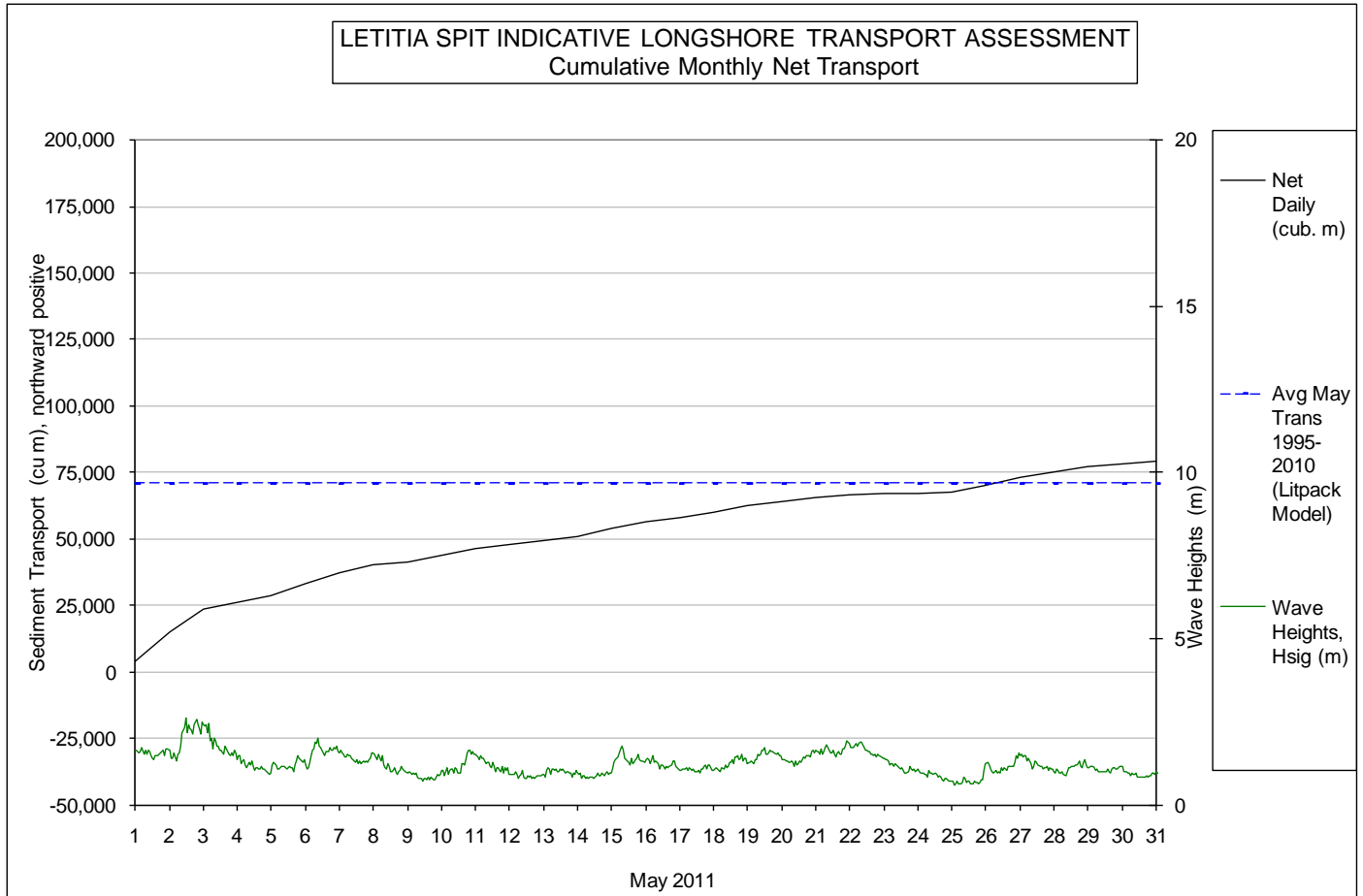


## 2. INDICATIVE LONGSHORE TRANSPORT

The graph below is based on simplified sediment transport modelling and is indicative only.

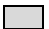
In May 2011 estimated natural sand transport (moving N towards Tweed entrance): to be in the order of 76,000m<sup>3</sup> to **79,000m<sup>3</sup>** (based on two separate models).

This result is about 110% of the average sand transport quantity for the month of May.

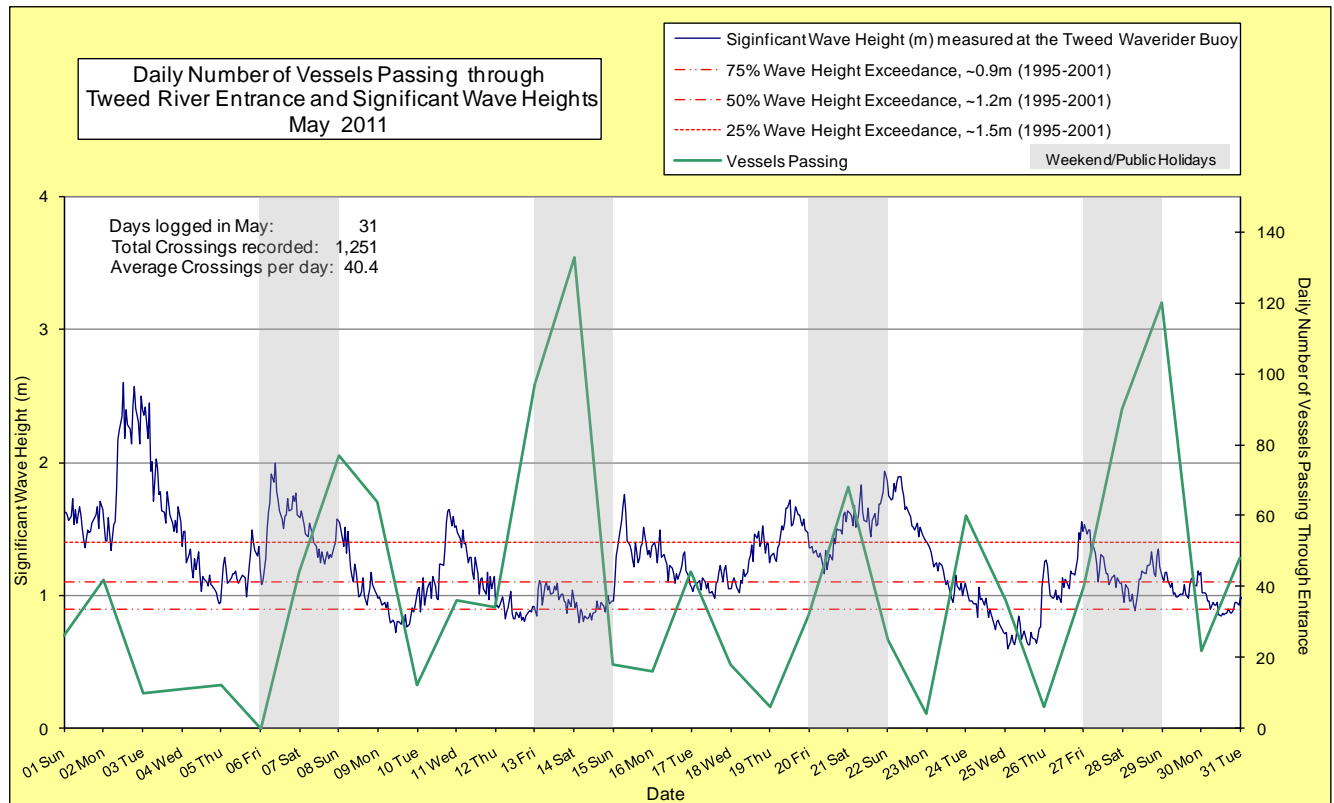
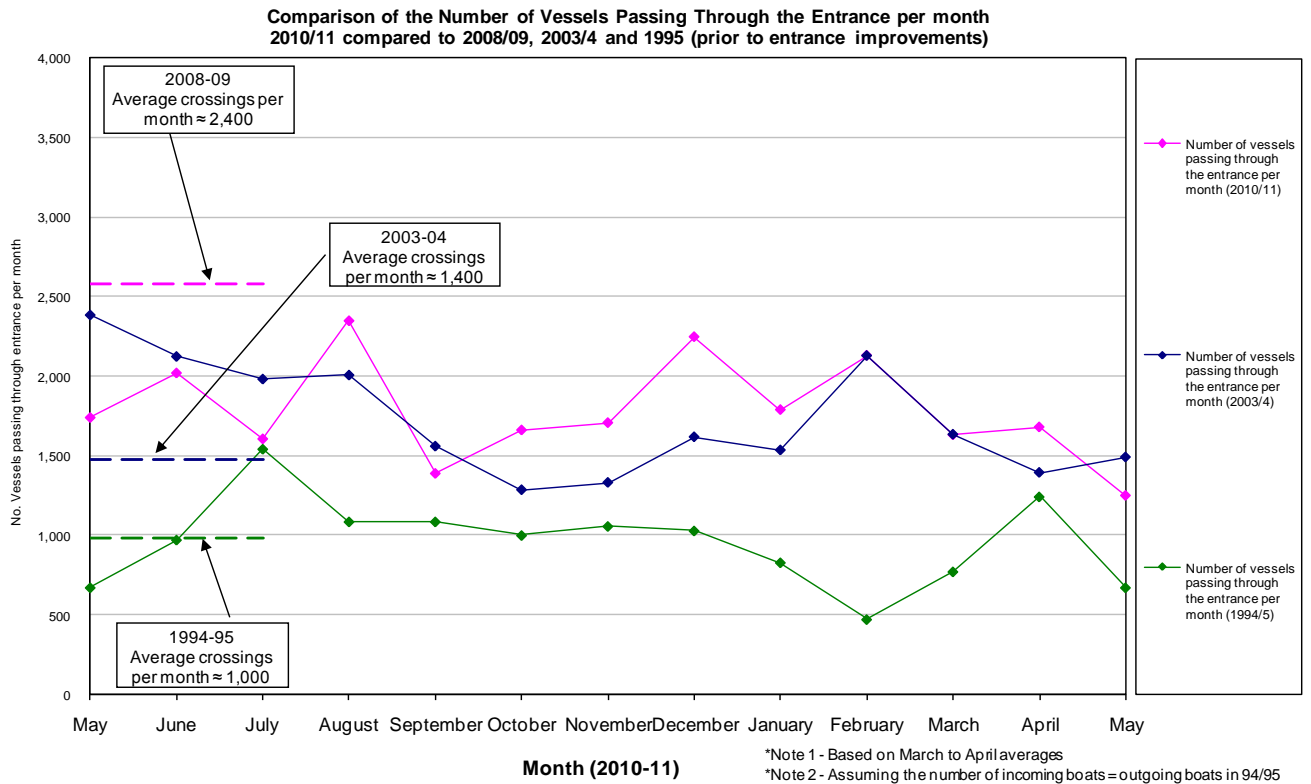


## 3. MEDIA COVERAGE

No media coverage referring to the project this month.

**4. TWEED RIVER ENTRANCE CONDITIONS****MARINE RESCUE NSW - MONITORING RESULTS**
 Weekends and public holidays

Date	Navigation Rating Impassable-----Good					Number of Boats
	Impassable (1)	Difficulty Encountered (2)	Some Difficulty Encountered (3)	Relatively Good Crossing (4)	Good Conditions (5)	
1 <sup>st</sup>						26
2 <sup>nd</sup>						42
3 <sup>rd</sup>						10
4 <sup>th</sup>						11
5 <sup>th</sup>						12
6 <sup>th</sup>						0
7 <sup>th</sup>						44
8 <sup>th</sup>						77
9 <sup>th</sup>						64
10 <sup>th</sup>						12
11 <sup>th</sup>						36
12 <sup>th</sup>						34
13 <sup>th</sup>						97
14 <sup>th</sup>						133
15 <sup>th</sup>						18
16 <sup>th</sup>						16
17 <sup>th</sup>						44
18 <sup>th</sup>						18
19 <sup>th</sup>						6
20 <sup>th</sup>						32
21 <sup>st</sup>						68
22 <sup>nd</sup>						25
23 <sup>rd</sup>						4
24 <sup>th</sup>						60
25 <sup>th</sup>						36
26 <sup>th</sup>						6
27 <sup>th</sup>						40
28 <sup>th</sup>						90
29 <sup>th</sup>						120
30 <sup>th</sup>						22
31 <sup>st</sup>						48
					<b>Total</b>	<b>1,251</b>



## 5. WAVE & SURFING CONDITIONS

Dominant swell condition: Wave heights ranged from calm to moderate seas (0.6 to 2.6 m). Wave directions varied from E to ESE.

High sea events: 2<sup>nd</sup> to 3<sup>rd</sup> May

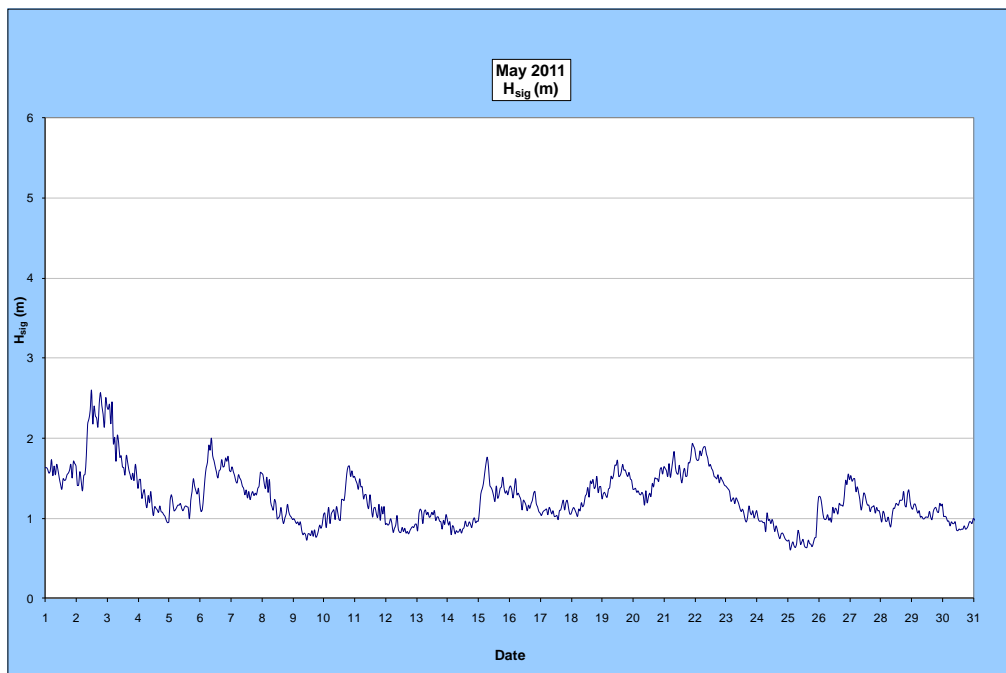
Monthly minimum significant wave height: 0.6 m on 25<sup>th</sup> May

Monthly maximum significant wave height: 2.6 m on 2<sup>nd</sup> May

Number of days on which waves were below 1.0 m: 12 days

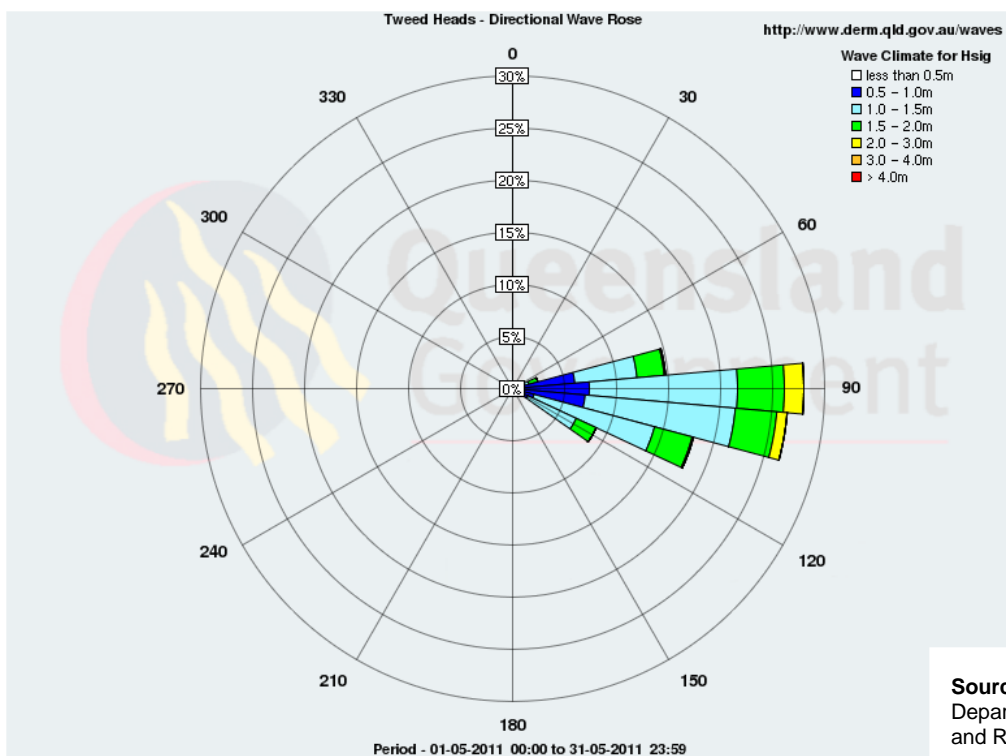
Number of days on which waves were above 2.0 m: 1 days

(Source: Tweed & Brisbane Wave Buoy; QDERM)



A link to data recorded by the Tweed Waverider Buoy is available at: <http://www.derm.qld.gov.au/waves>

## WAVE DIRECTION



Source: Queensland Department of Environment and Resource Management

## UPCOMING SURF AND SURF LIFESAVING EVENTS

- 2011 XCEL Open Ocean Paddleboard Race, 4 June Gold Coast
- Jesus Pro Am CADETS 16 & Under Boys and 16 & Under Girls Divisions, 18-19 June 2011, Duranbah Beach
- Jesus Pro Am, Open Men's and Women's Divisions, 18-19 June 2011, Duranbah Beach
- Queensland Masters Surfing Championship, 25-26 June 2011, Gold Coast Qld
- Billabong Occy's Grom Comp, 2-6 July 2011, Gold Coast
- Girls Surf Slam – Qld Championships, 23-24 July 2011, Gold Coast

## PHOTOGRAPHS OF SURF CONDITIONS



Duranbah, 1 May 2011 (source: Swellnet Surf Report)



Snapper Rocks, 3 May 2011 (source: Swellnet Surf Report)



Kirra Point, 5 May 2011 (source: Swellnet Surf Report)



Greenmount, 10 May 2011 (source: Swellnet Surf Report)



Duranbah, 10 May 2011 (source: Crown Lands Division, NSW DPI)



Snapper Rocks, 10 May 2011 (source: Crown Lands Division, NSW DPI)



Kirra, 17 May 2011 (source: Swellnet Surf Report)



Greenmount, 30 May 2011 (source: Swellnet Surf Report)



## SURF REPORT OVERVIEW

DATE	SURF	DIRECTION	COMMENTS
1	Clean, 0.9-1.5m	E	Fantastic conditions this morning, 1.2-1.5m double and up to triple overhead sets rolling through Snapper, D'Bah 0.9-1.2m+ and clean; Rainbow Bay and Greenmount 0.6m peelers & fun waves for big boards; Kirra 0.6m clean and fast
3	Clean, 0.9-1.5m	E	There are 1.2-1.5m sets rolling through Snapper with the odd bigger one. Rainbow and Greeny through to Kirra have had a 0.9m sets with 0.6m+ peaks.
4	Glassy, 0.6-1.2m	E	Max 0.9m sets.
5	Clean, 0.3-0.6m	ESE	Kirra and Greeny getting about 0.45m of swell and not much else. D'bah is probably the pick with 0.6m+
9	Clean, 0.3-0.6m	SE	Very small breaks with a bit of a wall forming at Snapper and D'bah, and not much else
10	Clean, 0.3-0.6m	E	Very small 0.6m sets at Snapper and D'bah, and 0.3-0.45m beachies at Greeny/Kirra
11	Clean, 0.6m	E	0.6m+ sets through S, D'bah, Kirra and Greeny
12	Clean, 0.3-0.45m	E	A bit hit and miss this morning
17	Clean, 0.3-0.6m	E	Allot of fun options around this morning with 0.6m rolling through D'Bah, 0.6m+ rolling through Snapper with the odd howler in the clean out set.
18	Clean, 0.3-0.6m	E	While there is a wait between sets, there are some fun ones about this morning
19	Bumpy, 0.3-0.6m	E	A bit lumpy, the rain and breeze is chopping up the wave surface
20	Clean, 0.3-0.6m	E	Similar conditions this morning
23	Sloppy, 0.3-0.6m	E	Lumpy and all over the place
25	Choppy, <0.3m	E	Not allot available to ride this morning
26	Choppy, 0.3-0.45m	ESE	Still not much on offer
27	Clean, 0.3-0.6m	ESE	A few great 0.6m waves at Snapper and 0.45-0.6m at Greeny
30	Glassy, 0.3-0.45m	E	Good rides on the sets through Rainbow and Greeny
31	Clean, 0.3-0.45m	E	Snapper, Rainbow and Greeny all picking up a tiny 0.45m set wave. D'Bah had a little more size, upto 0.6m and a few barrels

**Source:** Swellnet - Coolangatta Surf Report

Generally, May experienced calm to moderate conditions.

**END**