

TRESBP ENVIRONMENTAL MONITORING SUMMARY

JUNE 2011

OVERVIEW

In June, 2011:

- 63,363 m³ of sand was pumped to Snapper Rocks East.
- There were no media articles referring to the project.
- Sea conditions were calm to moderate (significant wave heights of 0.4 to 2.9 m)
- 1,649 boats crossings were recorded for the month (this is about 10% fewer than the June average).
- The estimated amount of sand moving north towards the Tweed River Entrance by natural processes in the order of 93,000 to 96,000 m³ (this is about 180% of the June average).

1. SAND PUMPING & DREDGING

Sand Delivery June 2011

Pumped:	63,363 m ³
Dredged:	0 m ³
Total:	63,363 m ³

Sand Delivery January to June 2011 (YTD)

Pumped:	276,509 m ³
Dredged:	0 m ³
Total:	276,509 m ³

Sand Delivery January to June 2010

Pumped:	223,619 m ³
Dredged:	0 m ³
Total:	223,619 m ³

Stage II Sand Delivery May 2000 to June 2011

Pumped:	6,087,247 m ³
Dredged:	2,038,900 m ³
Total:	8,126,147 m ³



CROWN LANDS DIVISION

Department of **Environment**
and **Resource Management**



Queensland Government

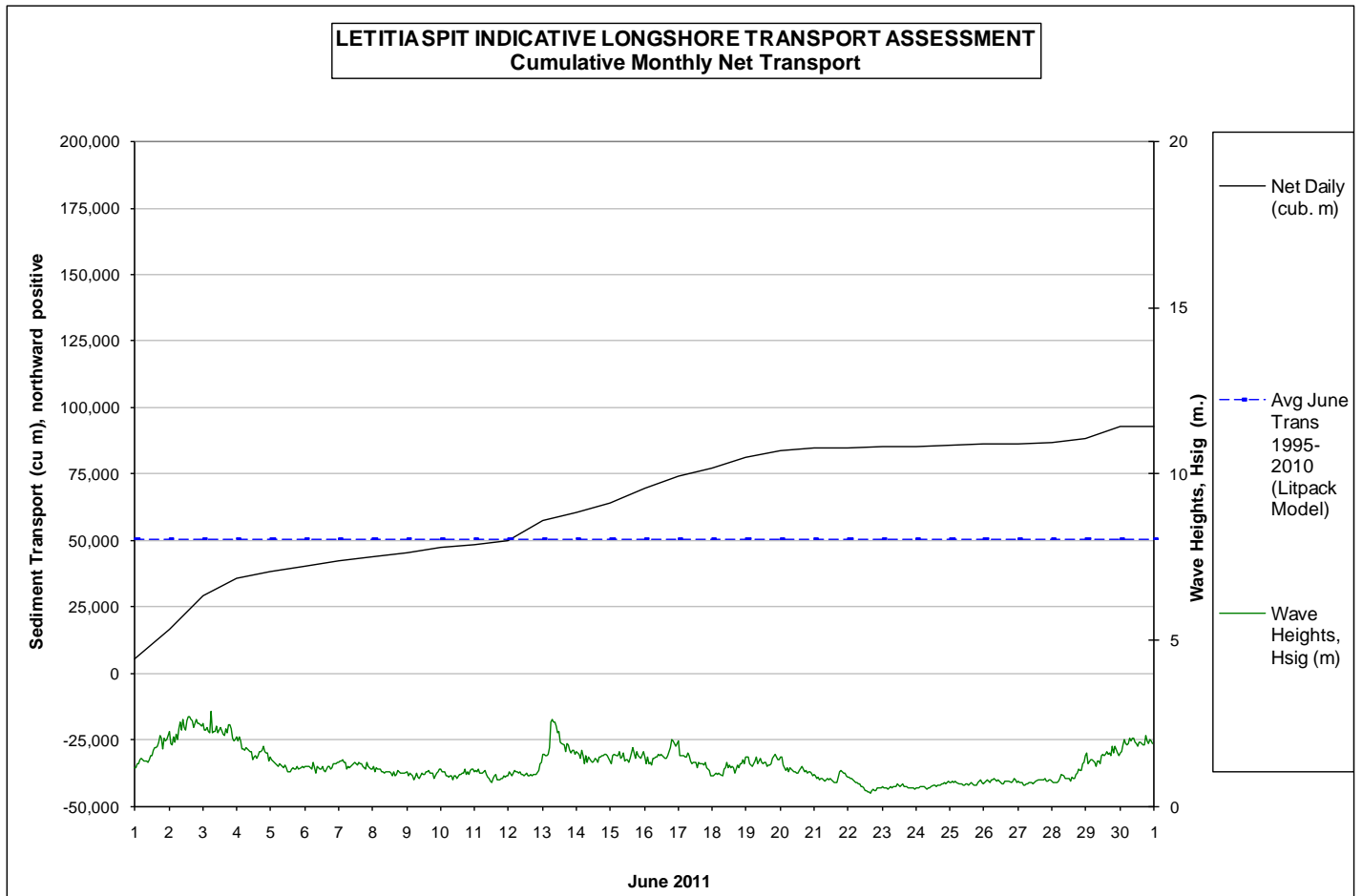


2. INDICATIVE LONGSHORE TRANSPORT

The graph below is based on simplified sediment transport modelling and is indicative only.

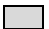
In June 2011 the estimated natural sand transport (moving N towards Tweed entrance): to be in the order of 93,000m³ to 96,000m³ (based on two separate models).

This result is about 180% of the average sand transport quantity for the month of June.

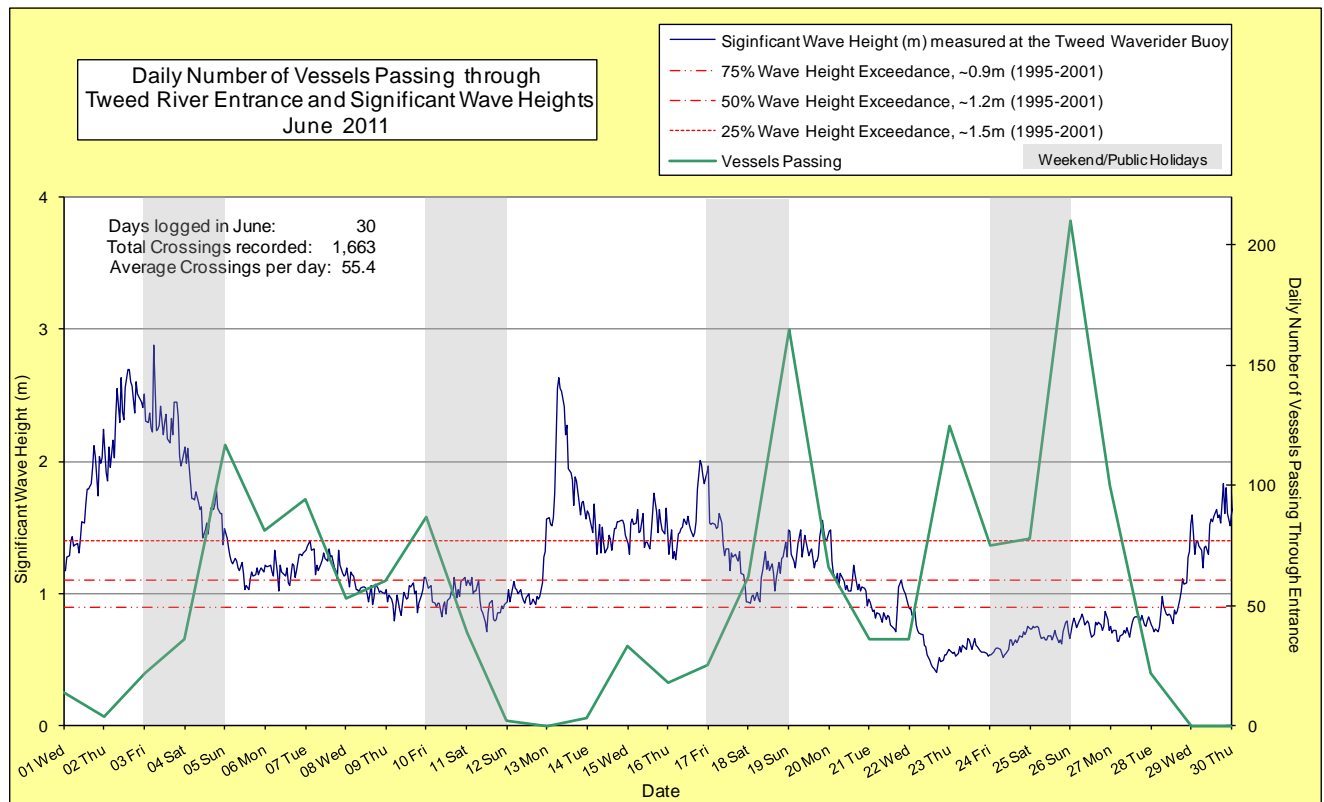
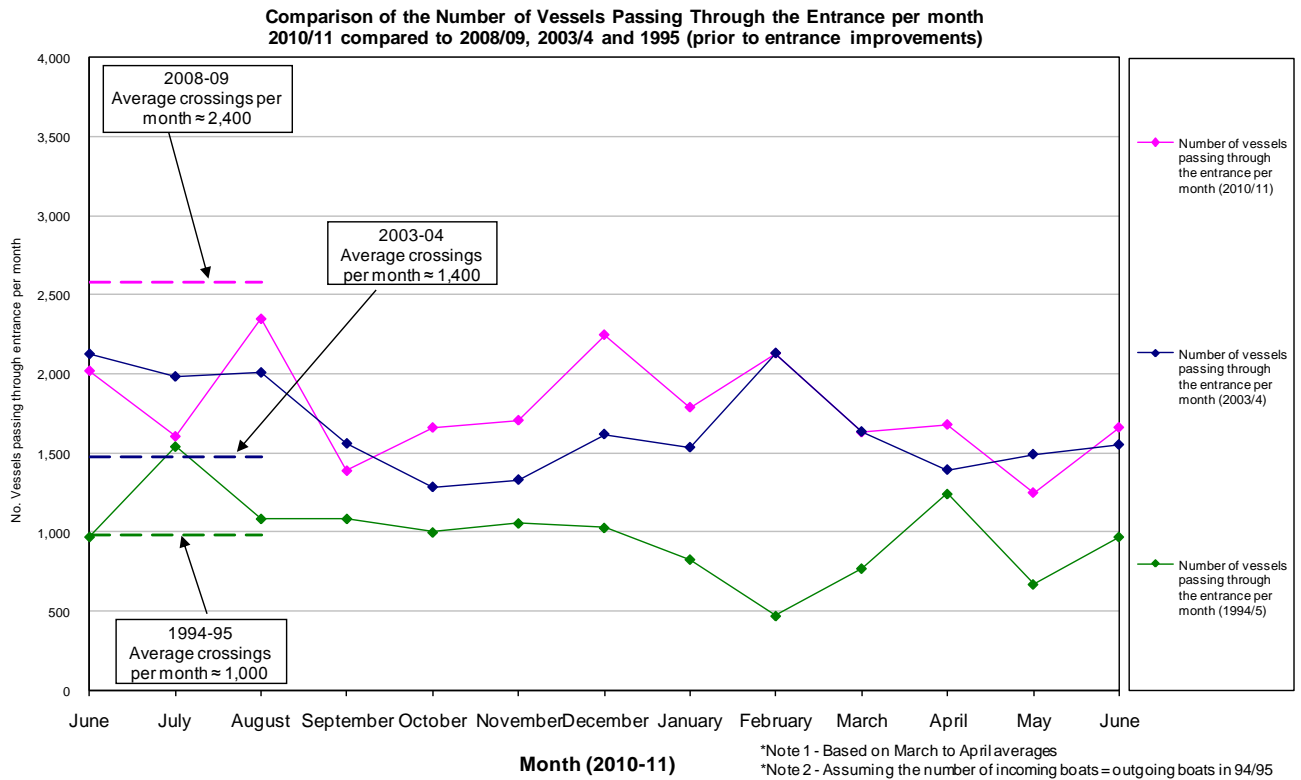


3. MEDIA COVERAGE

No media coverage referring to the project this month.

4. TWEED RIVER ENTRANCE CONDITIONS**MARINE RESCUE NSW - MONITORING RESULTS**
 Weekends and public holidays

Date	Navigation Rating Impassable-----Good					Number of Boats
	Impassable (1)	Difficulty Encountered (2)	Some Difficulty Encountered (3)	Relatively Good Crossing (4)	Good Conditions (5)	
1 st						14
2 nd						4
3 rd						22
4 th						36
5 th						117
6 th						81
7 th						94
8 th						53
9 th						60
10 th						87
11 th						39
12 th						2
13 th						0
14 th						3
15 th						33
16 th						18
17 th						25
18 th						62
19 th						165
20 th						66
21 st						36
22 nd						36
23 rd						125
24 th						75
25 th						78
26 th						210
27 th						100
28 th						22
29 th						0
30 th						0
					Total	1663



5. WAVE & SURFING CONDITIONS

Dominant swell condition: Wave heights ranged from calm to moderate seas (0.4 to 2.9 m). Wave directions varied from ENE to SE but mostly from ESE.

High sea events: 3rd and 13th June

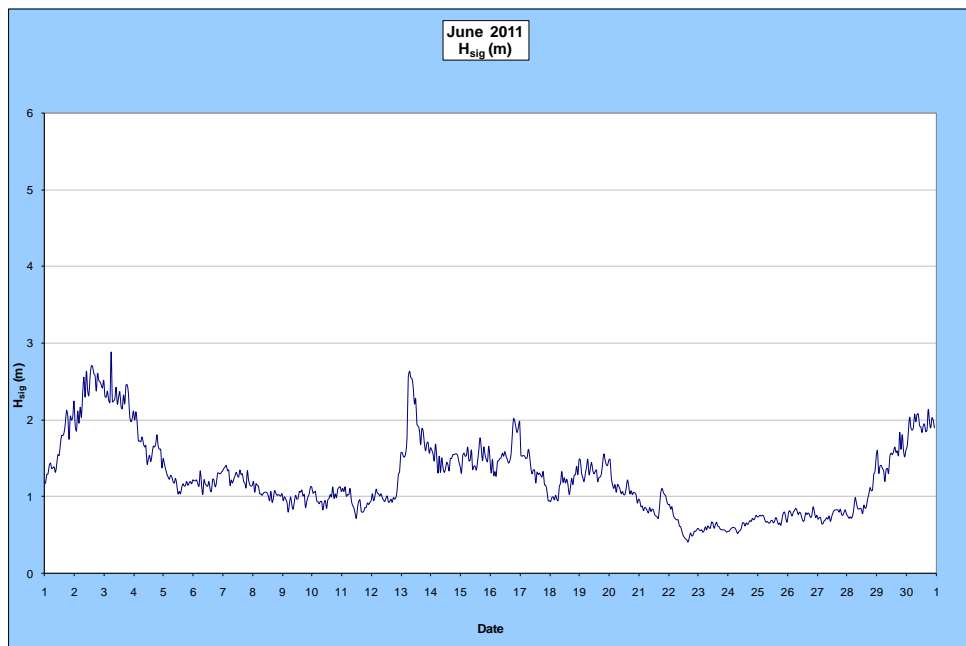
Monthly minimum significant wave height: 0.4 m on 22nd June

Monthly maximum significant wave height: 2.88 m on 3rd June

Number of days on which waves were below 1.0 m: 14 days

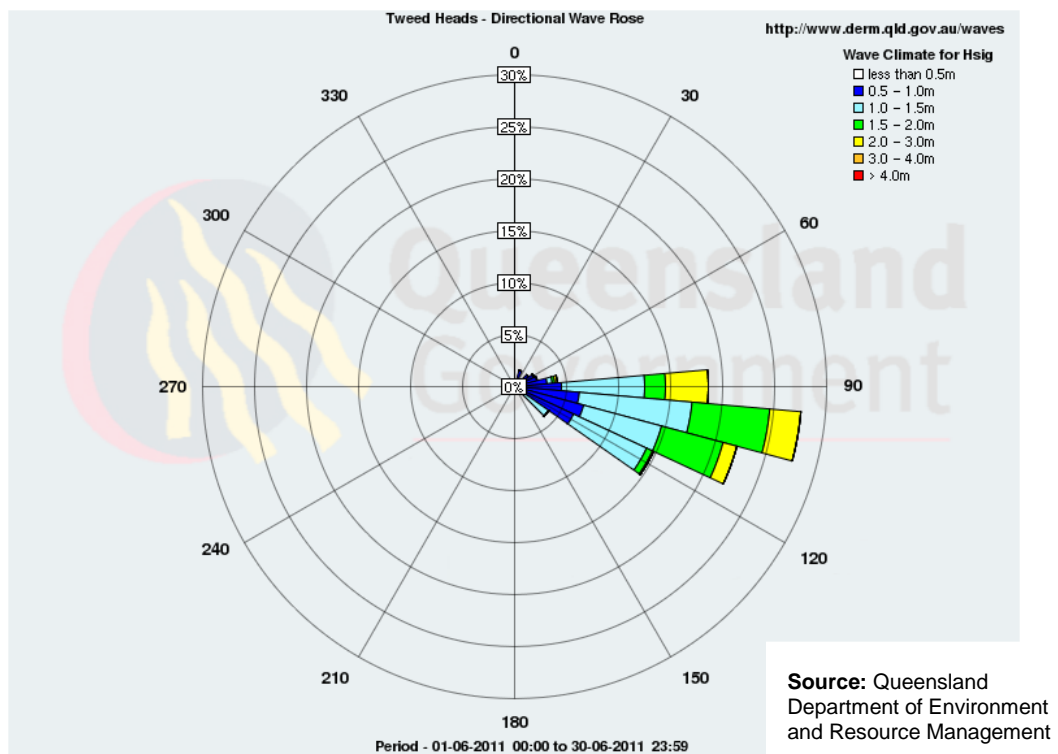
Number of days on which waves were above 2.0 m: 6 days

(Source: Tweed & Brisbane Wave Buoy; QDERM)



A link to data recorded by the Tweed Waverider Buoy is available at: <http://www.derm.qld.gov.au/waves>

WAVE DIRECTION



UPCOMING SURF AND SURF LIFESAVING EVENTS

- Billabong Occy's Grom Comp, 2-6 July 2011, Gold Coast
- Girls Surf Slam – Qld Championships, 23-24 July 2011, Gold Coast
- Qld State Junior Surfing Titles, 3-4 September 2011, Gold Coast
- Ocean & Earth Teenage Rampage, 17-18 September 2011, Gold Coast

PHOTOGRAPHS OF SURF CONDITIONS



Snapper Rocks, 2 June 2011 (source: Swellnet Surf)



Rainbow Bay, 3 June 2011 (source: Swellnet Surf Report)



Snapper Rocks, 3 June 2011 (source: Swellnet Surf)



Duranbah, 15 June 2011 (source: Swellnet Surf Report)



Greenmount, 16 June 2011 (source: Swellnet Surf Report)



Duranbah, 23 June 2011 (source: Swellnet Surf Report)

SURF REPORT OVERVIEW

DATE	SURF	DIRECTION	COMMENTS
1	Choppy, 0.6m	E	Solid 0.6m at Snapper and D'Bah& fun waves into Rainbow and Greeny
2	Bumpy, 1.2-1.5m	ESE	Snapper had a few screamers roll through in the 1.5m mark. Greeny had a solid 0.9m.
3	Choppy, 0.9-1.5m	E	Snapper still in the 1.5m range. More protected Rainbow into Greeny have much cleaner set waves rolling through in the 0.9m+ range.
6	Choppy, 0.3-0.6m	ESE	Choppy conditions. Good day for golf or tennis
8	Glassy, 0.3-0.45m	E	Its very clean but the sets are in the 0.45m range, with the odd 0.6m rolling in through Snapper.
9	Glassy, 0.3-0.45m	E	Magic glassy conditions, but even less swell than yesterday
14	Bumpy, 0.6-0.9m	ESE	Bumpy, lumpy slop. D'bah is a lot cleaner and in the 0.9m range, but a little straight
15	Bumpy, 0.6-0.9m	E	Pretty ordinary this morning with not alot of options around
16	Clean, 0.6m	ESE	The odd 0.9m rolling through at D'Bah and Snapper
17	Clean, 0.3-0.6m	ESE	The odd 0.75m rolling through at D'Bah and Snapper with only 0.45m rolling through rainbow & Greeny
21	Clean,<0.3m	SE	So small not worth photographing
22	Clean,<0.3m	SE	It's a lake today.
23	Clean,0.15m	ESE	There are no waves
24	Glassy,0.15m	ESE	There are still no waves
27	Glassy,0.3m	E	Only a tiny peak at Snapper. D'bah is the pick with the odd bigger one roll through 0.3-0.45m
28	Choppy, 0.3m	ENE	0.3m+ rolling through snapper and D'bah this morning
30	Choppy, 0.6m	ESE	Swell is picking up but the southerly's are making very messy conditions

Source: Swellnet - Coolangatta Surf Report

Generally, June experienced calm to moderate conditions.

END