

TRESBP ENVIRONMENTAL MONITORING SUMMARY

MAY 2010

OVERVIEW

In May, 2010:

- 12,868 m³ of sand were pumped onto Duranbah Beach and 23,515 m³ of sand were pumped to Snapper Rocks East, totalling 36,383 m³
- There were two media articles referring to the project. One media article directly referred to the project regarding entrance dredging and one media article referred indirectly to the project, both were of a neutral view.
- Entrance conditions were mixed with 11 days regarded as navigation with "some difficulty" and the remaining 20 days regarded as "relatively good" to "good". A total of 1,740 boat crossings were recorded (about 20% lower than the May average).
- Surf quality from Duranbah to Kirra was poor to average, with very small to small sized E waves throughout the month.
- The estimated amount of sand moving north towards the Tweed River Entrance by natural processes was about 38,400 m³ (only about 50% of the May average).

1. SAND PUMPING & DREDGING

Sand Delivery May 2010

Pumped:	36,383m ³
Dredged:	0m ³
Total:	36,383m ³

Sand Delivery January to May 2010 (YTD)

Pumped:	190,678m ³
Dredged:	0m ³
Total:	190,678m ³

Sand Delivery January to May 2009

Pumped:	248,312m ³
Dredged:	0m ³
Total:	248,312m ³

Stage II Sand Delivery May 2000 to May 2010

Pumped:	5,605,807m ³
Dredged:	2,038,900m ³
Total:	7,644,707m ³



Department of **Environment**
and **Resource Management**

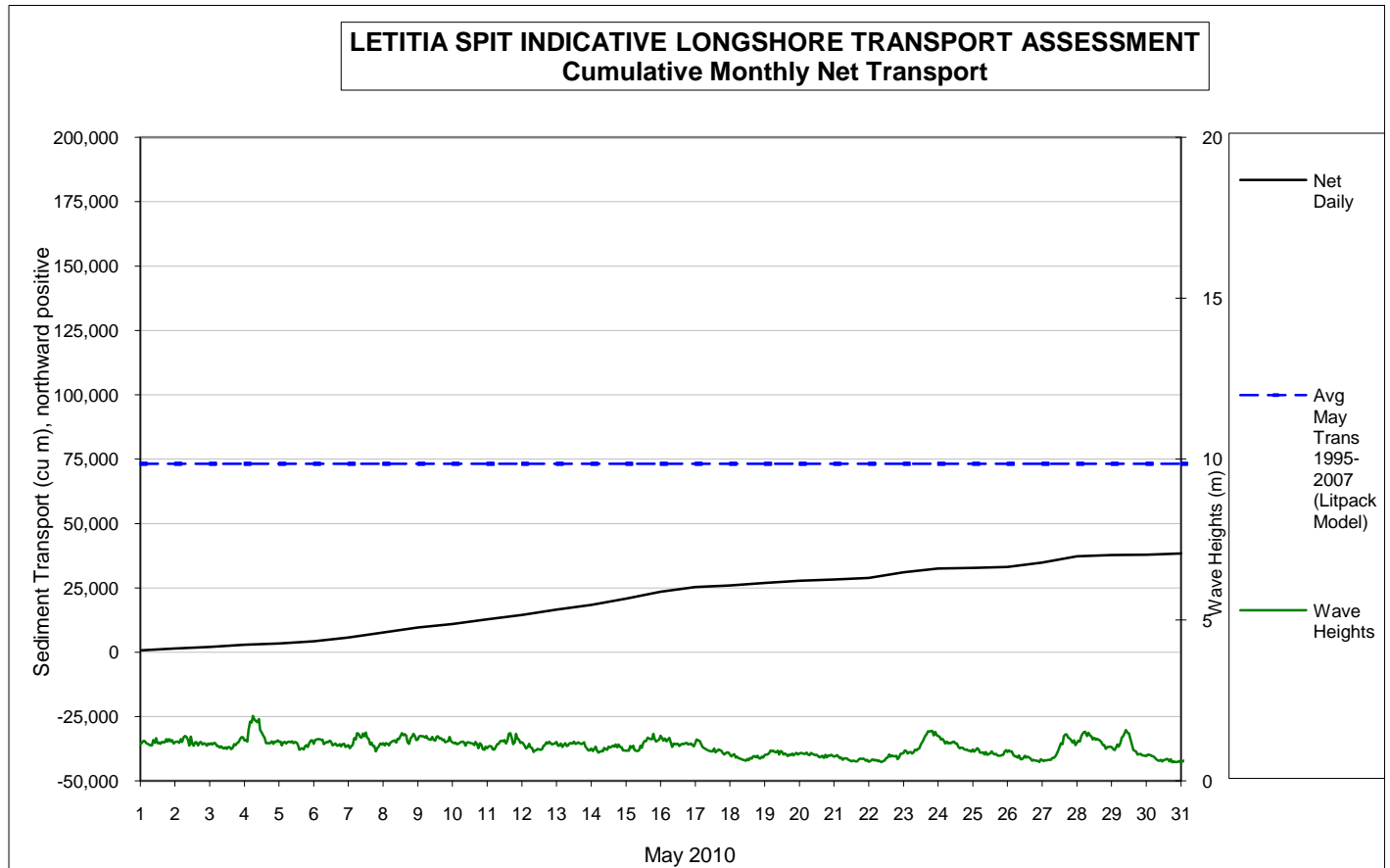


2. INDICATIVE LONGSHORE TRANSPORT

The graph below is based on a simplified sediment transport model and is indicative only.

May 2010 estimated natural sand transport (moving N towards Tweed entrance): 38,400 m³.

This result is about 50 % of the average sand transport quantity for the month of May.




3. MEDIA COVERAGE

Tweed Daily News, 1st May 2010, “No dredging for Tweed River mouth”.

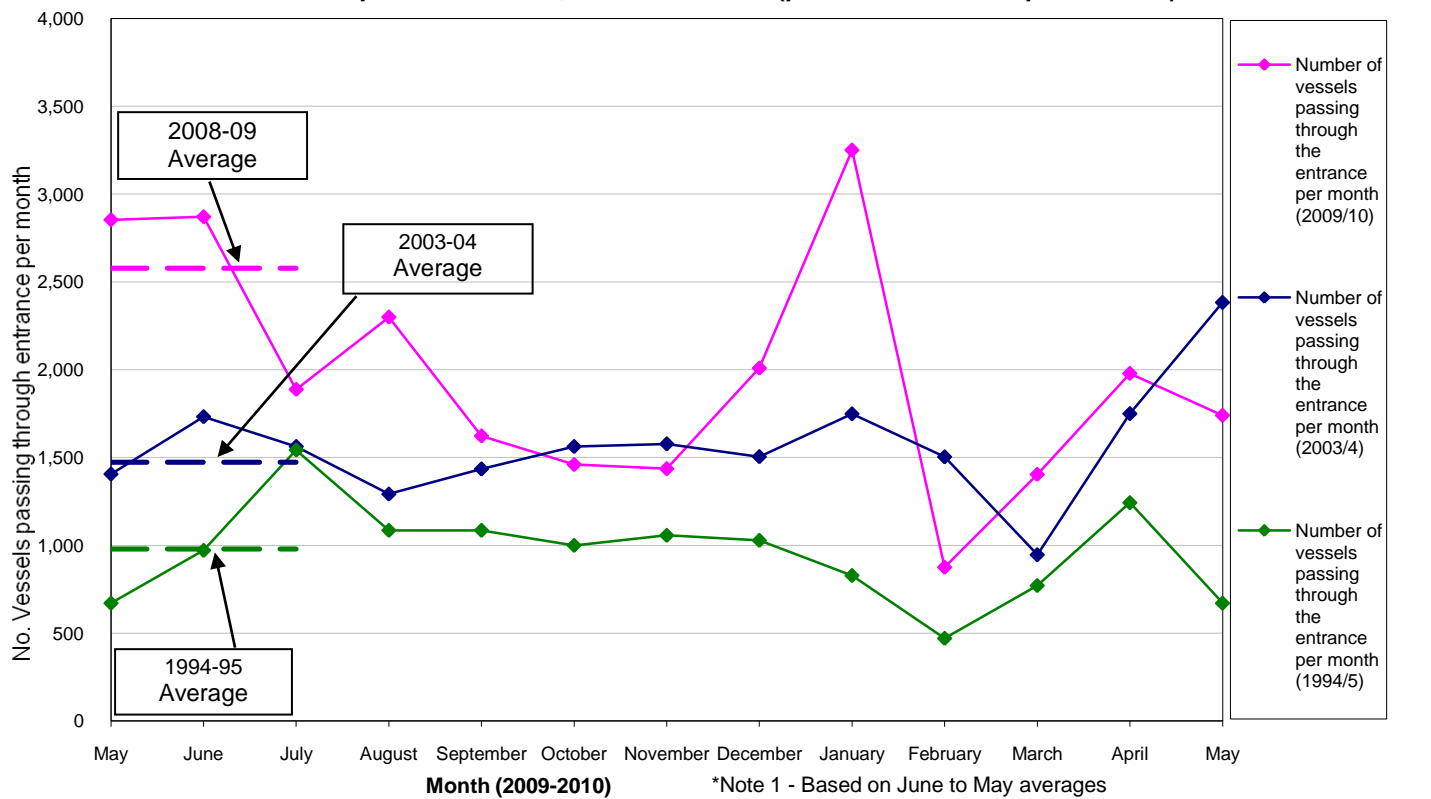
“The latest survey of the Tweed River bar has found there was no current need for dredging. ...”

Tweed Daily News, 5th May 2010, “VMR vessel damaged during rescue”:

4. TWEED RIVER ENTRANCE CONDITIONS**VOLUNTEER MARINE RESCUE MONITORING RESULTS**
 Weekends and public holidays

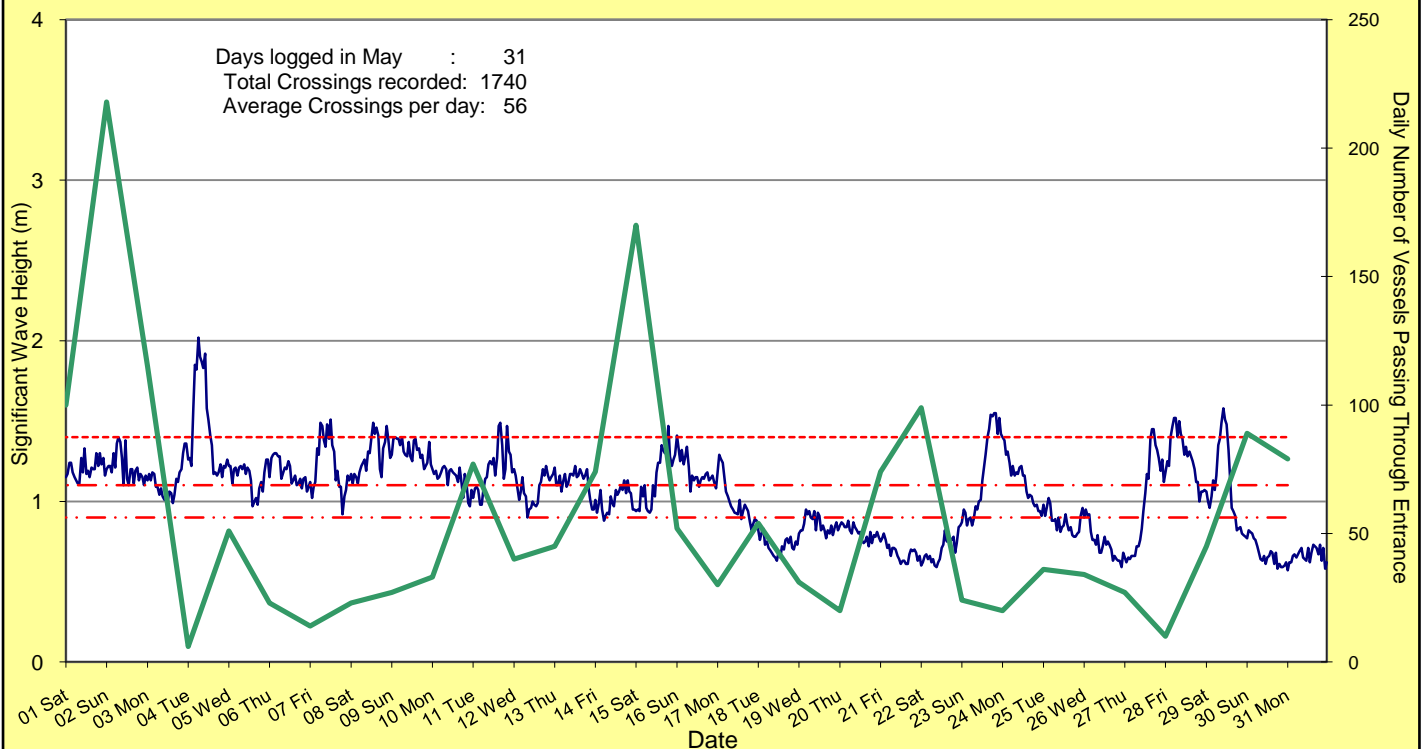
Date	Navigation Rating Impassable-----Good					Number of Boats
	Impassable	Difficulty Encountered	Some Difficulty Encountered	Relatively Good Crossing	Good Conditions	
1 st						100
2 nd						218
3 rd						115
4 th						6
5 th						51
6 th						23
7 th						14
8 th						23
9 th						27
10 th						33
11 th						77
12 th						40
13 th						45
14 th						74
15 th						170
16 th						52
17 th						30
18 th						54
19 th						31
20 th						20
21 st						74
22 nd						99
23 rd						24
24 th						20
25 th						36
26 th						34
27 th						27
28 th						10
29 th						45
30 th						89
31 st						79
Total						1740

**Comparison of the Number of Vessels Passing Through the Entrance per month
2009/10 compared to 2008/09, 2003/4 and 1995 (prior to entrance improvements)**



**Daily Number of Vessels Passing through
Tweed River Entrance and Significant Wave Heights
May 2010**

— Significant Wave Height (m) measured at the Tweed Waverider Buoy
 - - - 75% Wave Height Exceedance, ~0.9m (1995-2001)
 - - - 50% Wave Height Exceedance, ~1.2m (1995-2001)
 - - - 25% Wave Height Exceedance, ~1.5m (1995-2001)
 — Vessels Passing



5. WAVE & SURFING CONDITIONS

Dominant swell condition: Mainly 0.5 to 1.3 m waves from ENE-ESE

High sea events: None

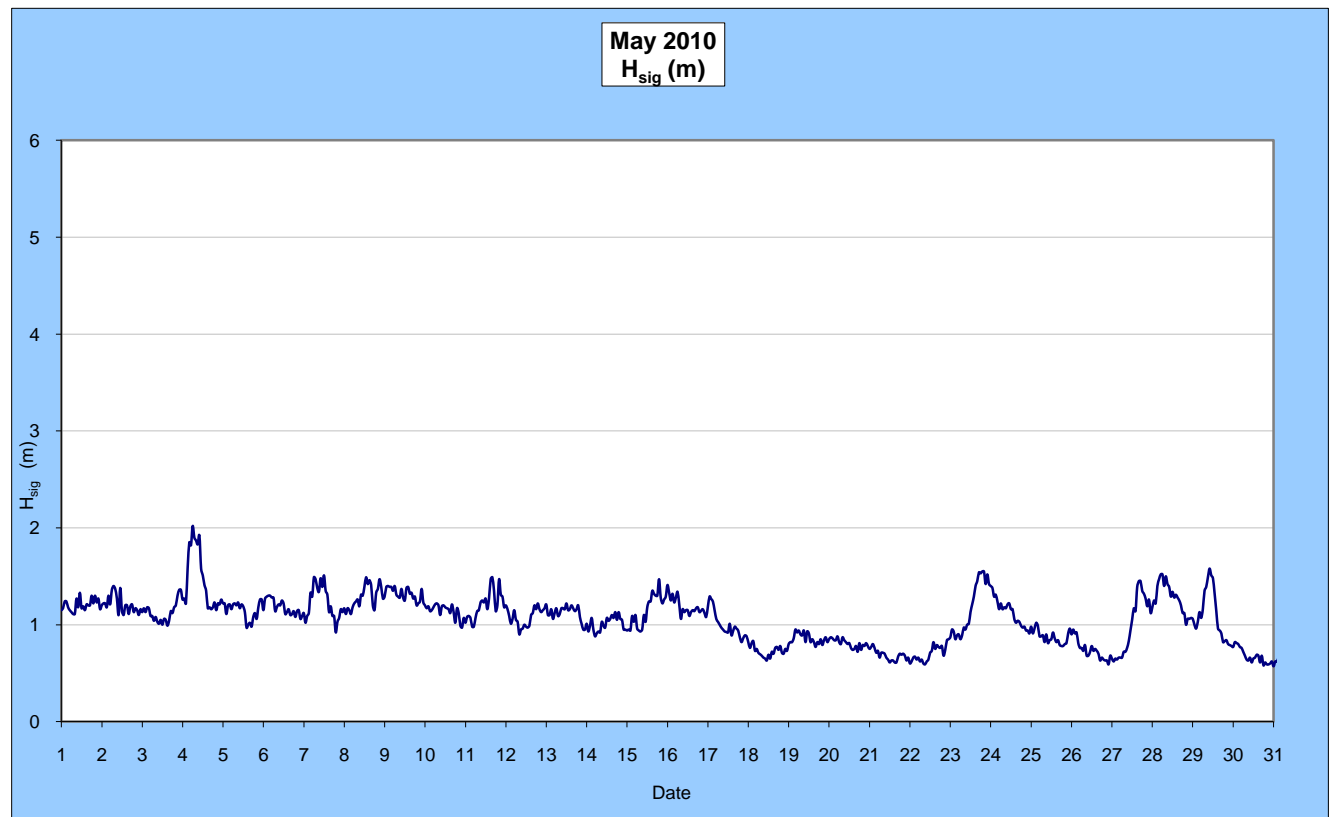
Monthly minimum significant wave height: 0.58 m on 30 May

Monthly maximum significant wave height: 2.02 m on 4 May

Number of days with waves below 1.0 m: 10 days

Number of days with waves above 2.0 m: 1 day

(Source: Tweed & Brisbane Wave Buoy; QDERM)



A link to data recorded by the Tweed Waverider Buoy is available at: <http://www.derm.qld.gov.au/waves>

PHOTOGRAPHS OF SURF CONDITIONS



Duranbah, 30 April (source LPMA)



Snapper Rocks, 30 April (source LPMA)



Coolangatta Bay, 30 April (source LPMA)

SURF REPORT OVERVIEW

Generally, May was a calm month with calm to average height waves and light winds.

END