

# TRESBP ENVIRONMENTAL MONITORING SUMMARY

## JUNE 2010

### OVERVIEW

In June, 2010:

- 8,913 m<sup>3</sup> of sand were pumped onto Duranbah Beach and 24,028 m<sup>3</sup> of sand were pumped to Snapper Rocks East, totalling 32,941 m<sup>3</sup>
- There were no media articles referring to the project directly or indirectly.
- Sea conditions were calm to average with 12 days of waves less than one metre and less than one day of moderate seas (there were only a few hours recorded with waves greater than 2m).
- A total of 2,020 boat crossings were recorded (about 4% higher than the June average).
- The estimated amount of sand moving north towards the Tweed River Entrance by natural processes was about 46,400 m<sup>3</sup> (only about 90% of the June average).

### 1. SAND PUMPING & DREDGING

#### **Sand Delivery June 2010**

Pumped:	32,941m <sup>3</sup>
Dredged:	0m <sup>3</sup>
Total:	32,941m <sup>3</sup>

#### **Sand Delivery January to June 2010 (YTD)**

Pumped:	223,619m <sup>3</sup>
Dredged:	0m <sup>3</sup>
Total:	223,619m <sup>3</sup>

#### **Sand Delivery January to June 2009**

Pumped:	248,312m <sup>3</sup>
Dredged:	0m <sup>3</sup>
Total:	248,312m <sup>3</sup>

#### **Stage II Sand Delivery May 2000 to June 2010**

Pumped:	5,638,748m <sup>3</sup>
Dredged:	2,038,900m <sup>3</sup>
Total:	7,677,648m <sup>3</sup>



Department of **Environment**  
and **Resource Management**

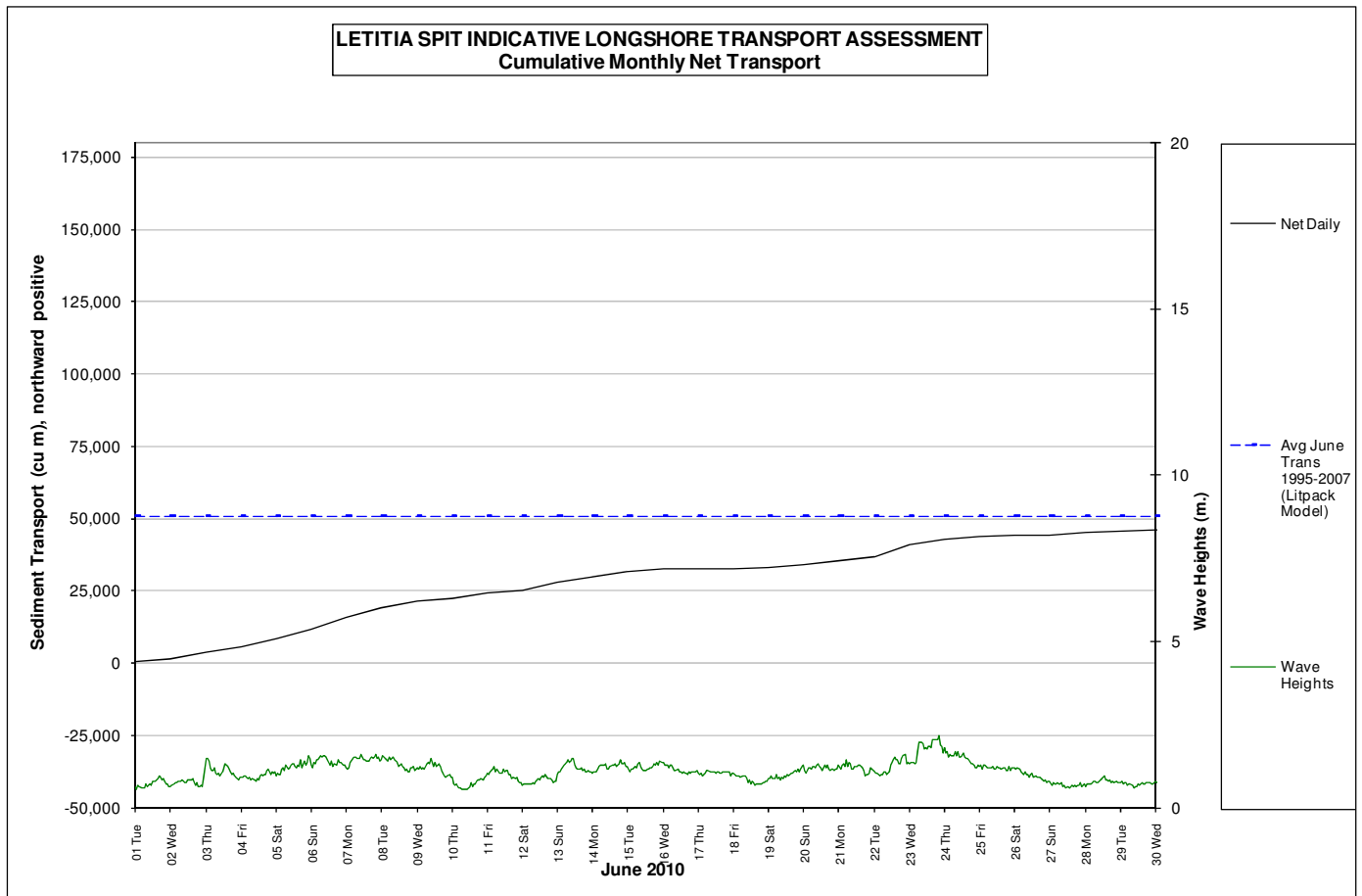


## 2. INDICATIVE LONGSHORE TRANSPORT

The graph below is based on a simplified sediment transport model and is indicative only.


June 2010 estimated natural sand transport (moving N towards Tweed entrance): 46,400 m<sup>3</sup>.

This result is about 90 % of the average sand transport quantity for the month of June.



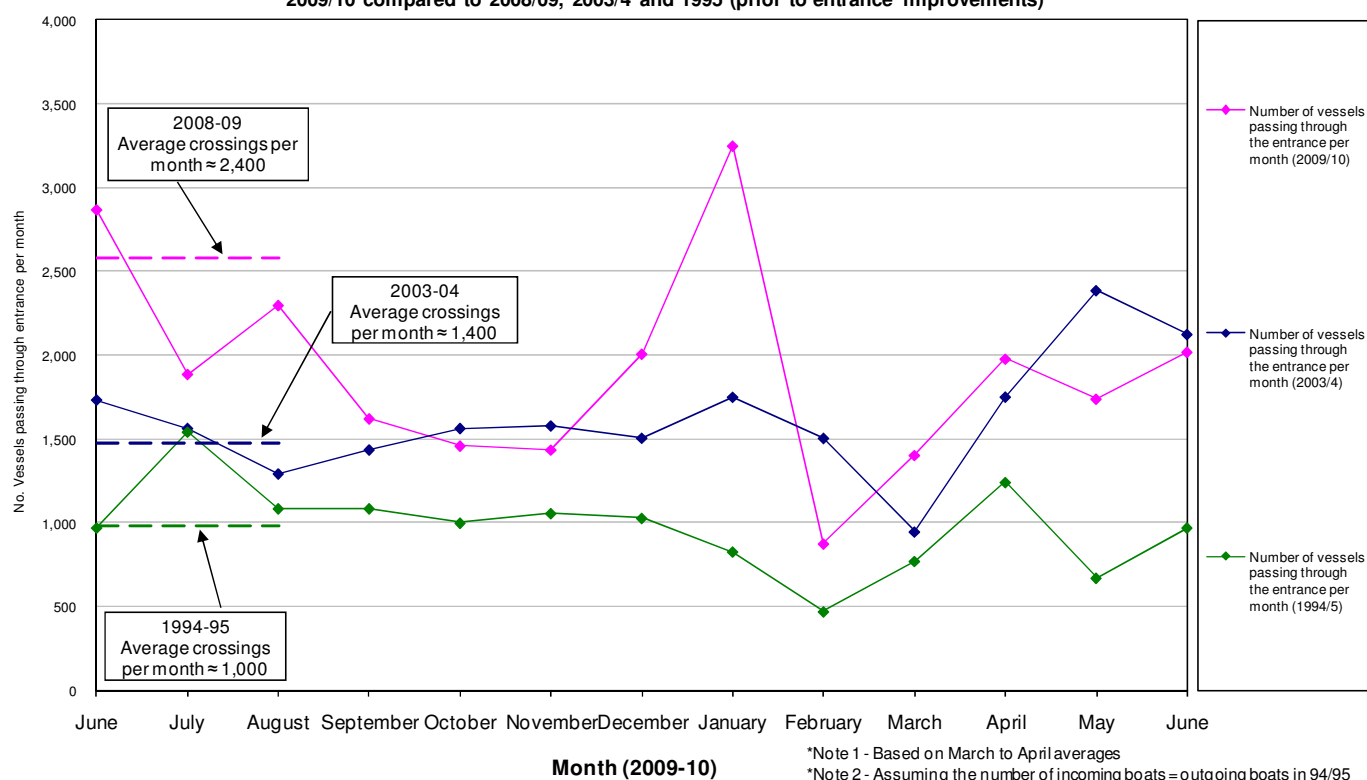
## 3. MEDIA COVERAGE

There were no media items found this month which referred, directly or indirectly, to the project.

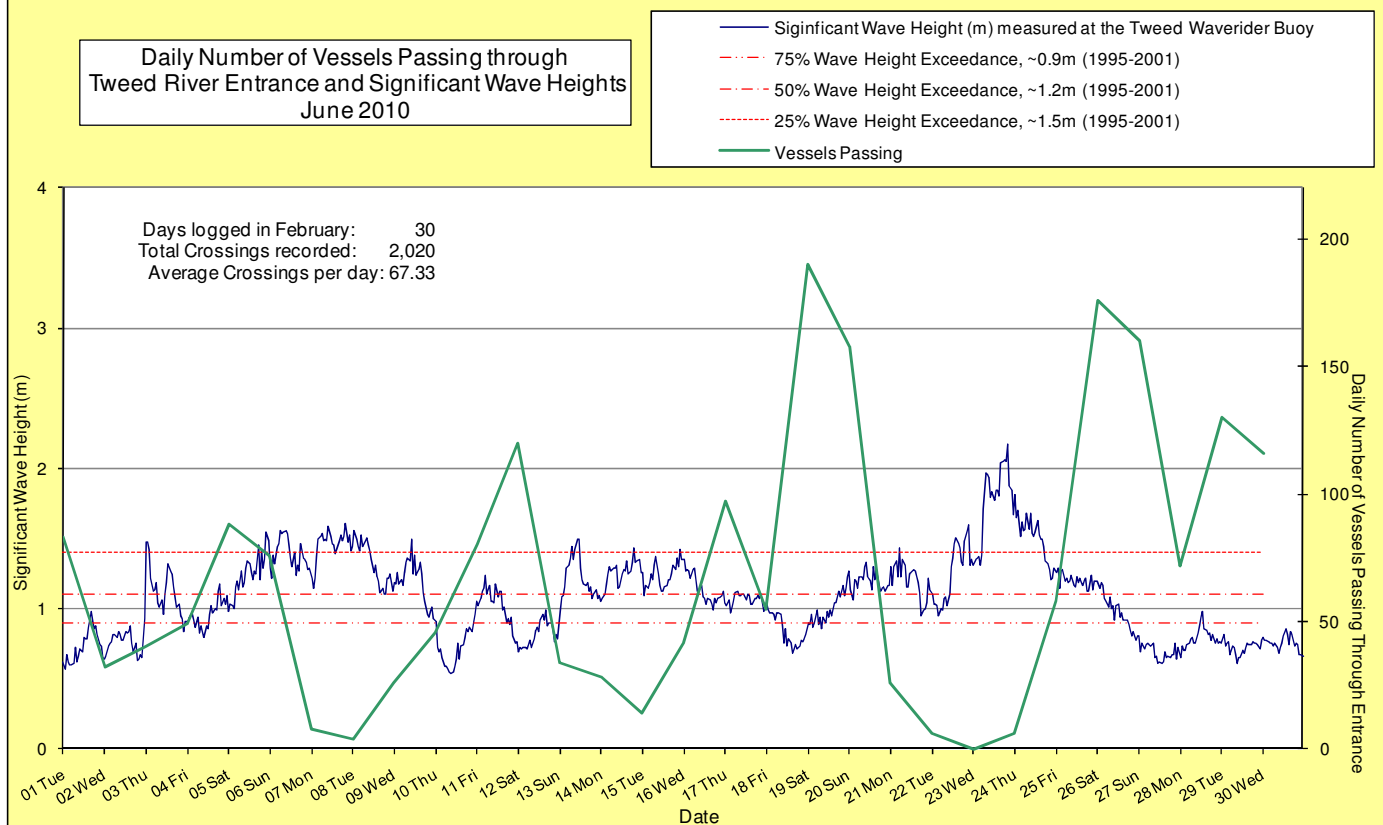
**4. TWEED RIVER ENTRANCE CONDITIONS****VOLUNTEER MARINE RESCUE MONITORING RESULTS**
 Weekends and public holidays

Date	Navigation Rating Impassable-----Good					Number of Boats
	Impassable	Difficulty Encountered	Some Difficulty Encountered	Relatively Good Crossing	Good Conditions	
1 <sup>st</sup>						83
2 <sup>nd</sup>						32
3 <sup>rd</sup>						40
4 <sup>th</sup>						49
5 <sup>th</sup>						88
6 <sup>th</sup>						76
7 <sup>th</sup>						8
8 <sup>th</sup>						4
9 <sup>th</sup>						26
10 <sup>th</sup>						46
11 <sup>th</sup>						80
12 <sup>th</sup>						120
13 <sup>th</sup>						34
14 <sup>th</sup>						28
15 <sup>th</sup>						14
16 <sup>th</sup>						42
17 <sup>th</sup>						97
18 <sup>th</sup>						55
19 <sup>th</sup>						190
20 <sup>th</sup>						158
21 <sup>st</sup>						26
22 <sup>nd</sup>						6
23 <sup>rd</sup>						0
24 <sup>th</sup>						6
25 <sup>th</sup>						58
26 <sup>th</sup>						176
27 <sup>th</sup>						160
28 <sup>th</sup>						72
29 <sup>th</sup>						130
30 <sup>th</sup>						116
Total						2,020

Comparison of the Number of Vessels Passing Through the Entrance per month  
2009/10 compared to 2008/09, 2003/4 and 1995 (prior to entrance improvements)



Daily Number of Vessels Passing through  
Tweed River Entrance and Significant Wave Heights  
June 2010



## 5. WAVE & SURFING CONDITIONS

Dominant swell condition: 1<sup>st</sup> to 15<sup>th</sup> waves approached from ESE to SE, swinging ENE/NE on 17<sup>th</sup> to 18<sup>th</sup> with gradual return to ESE over second half of month.

High sea events: None

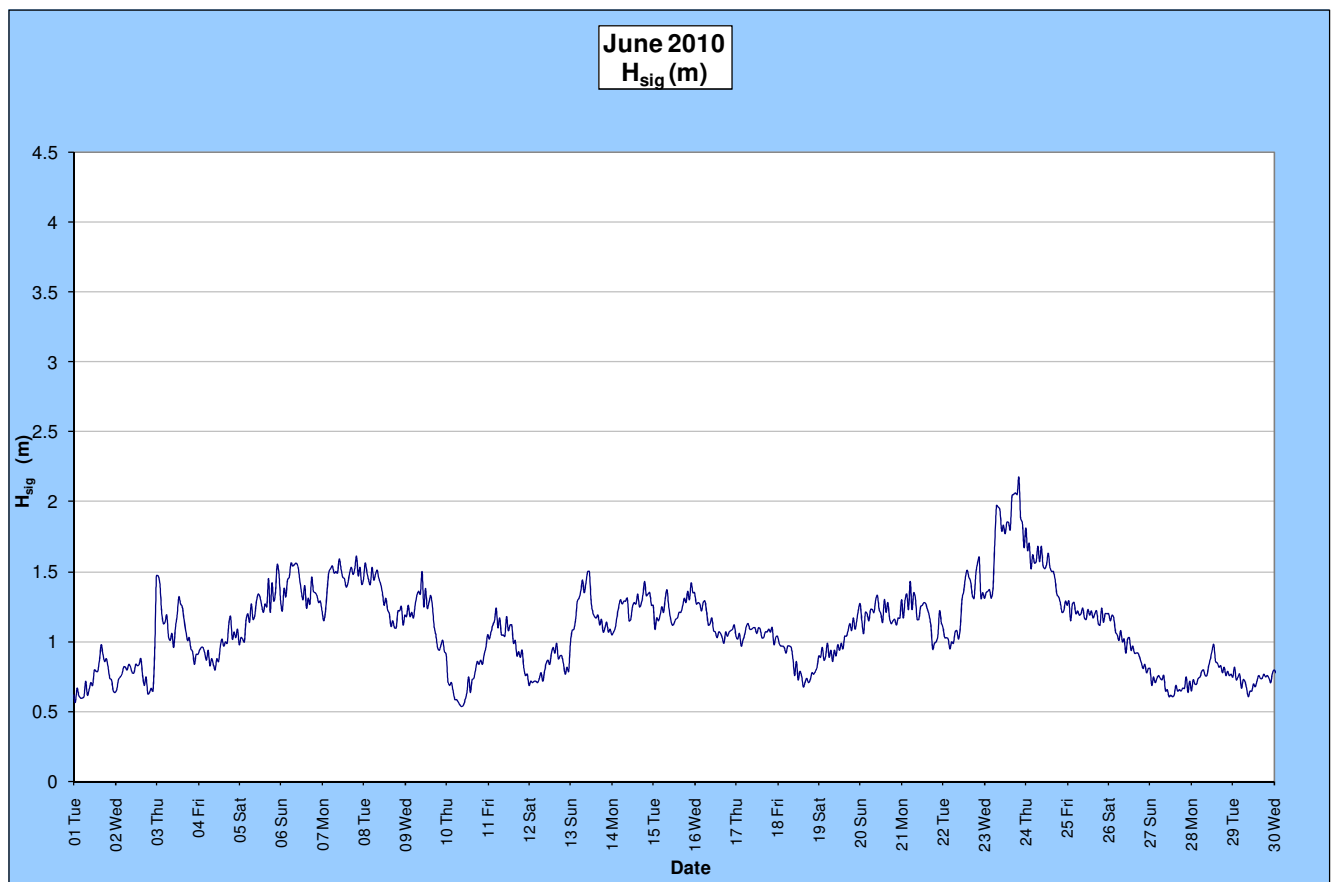
Monthly minimum significant wave height: 0.54 m on 10 June

Monthly maximum significant wave height: 2.17 m on 23 June

Number of days with waves below 1.0 m: 12 days

Number of days with waves above 2.0 m: less than 1 day

(Source: Tweed & Brisbane Wave Buoy; QDERM)



A link to data recorded by the Tweed Waverider Buoy is available at: <http://www.derm.qld.gov.au/waves>

### UPCOMING SURF AND SURF LIFESAVING EVENTS

- 2010 Billabong Occy's Grom Comp, 3-7 July 2010, Gold Coast
- Red Bull Junior Surf Masters, 9-11 July 2010, Gold Coast
- IRB State Championships, 16-17 July, 2010, Coolangatta
- Girls Surf Slam Qld Championships, 24-25 July, 2010, Gold Coast
- "Cooly Ocean Classic", 31 July 2010, Coolangatta (TBC)

## PHOTOGRAPHS OF SURF CONDITIONS



Snapper Rocks, 17 June (source: The Perfect Wave Gallery)



Snapper Rocks, 20 June (source: The Perfect Wave Gallery )

## SURF REPORT OVERVIEW

Generally, June was a calm month with calm to average height waves and light winds.

**END**