

# TRESBP ENVIRONMENTAL MONITORING SUMMARY

## JANUARY 2011

### OVERVIEW

In January, 2011:

- 35,722 m<sup>3</sup> of sand was pumped to Snapper Rocks East.
- There were no media articles referring to the project.
- Sea conditions were moderate to rough for about half of the month with average conditions prevailing for the remainder of the month.
- Entrance conditions were reasonable for about half of the month with 1,790 boats crossings recorded (this is about 9% fewer than the January average).
- The estimated amount of sand moving north towards the Tweed River Entrance by natural processes was about 68,000m<sup>3</sup> (this is about 50% greater than the January average).

### 1. SAND PUMPING & DREDGING

#### **Sand Delivery January 2011**

Pumped:	35,722m <sup>3</sup>
Dredged:	0m <sup>3</sup>
Total:	35,722m <sup>3</sup>

#### **Sand Delivery January 2011 (YTD)**

Pumped:	35,722m <sup>3</sup>
Dredged:	0m <sup>3</sup>
Total:	35,722m <sup>3</sup>

#### **Sand Delivery January 2010**

Pumped:	6,641m <sup>3</sup>
Dredged:	0m <sup>3</sup>
Total:	6,641m <sup>3</sup>

#### **Stage II Sand Delivery May 2000 to January 2011**

Pumped:	5,846,460m <sup>3</sup>
Dredged:	2,038,900m <sup>3</sup>
Total:	7,885,360m <sup>3</sup>



Land & Property  
Management Authority

Department of Environment  
and Resource Management



Queensland Government

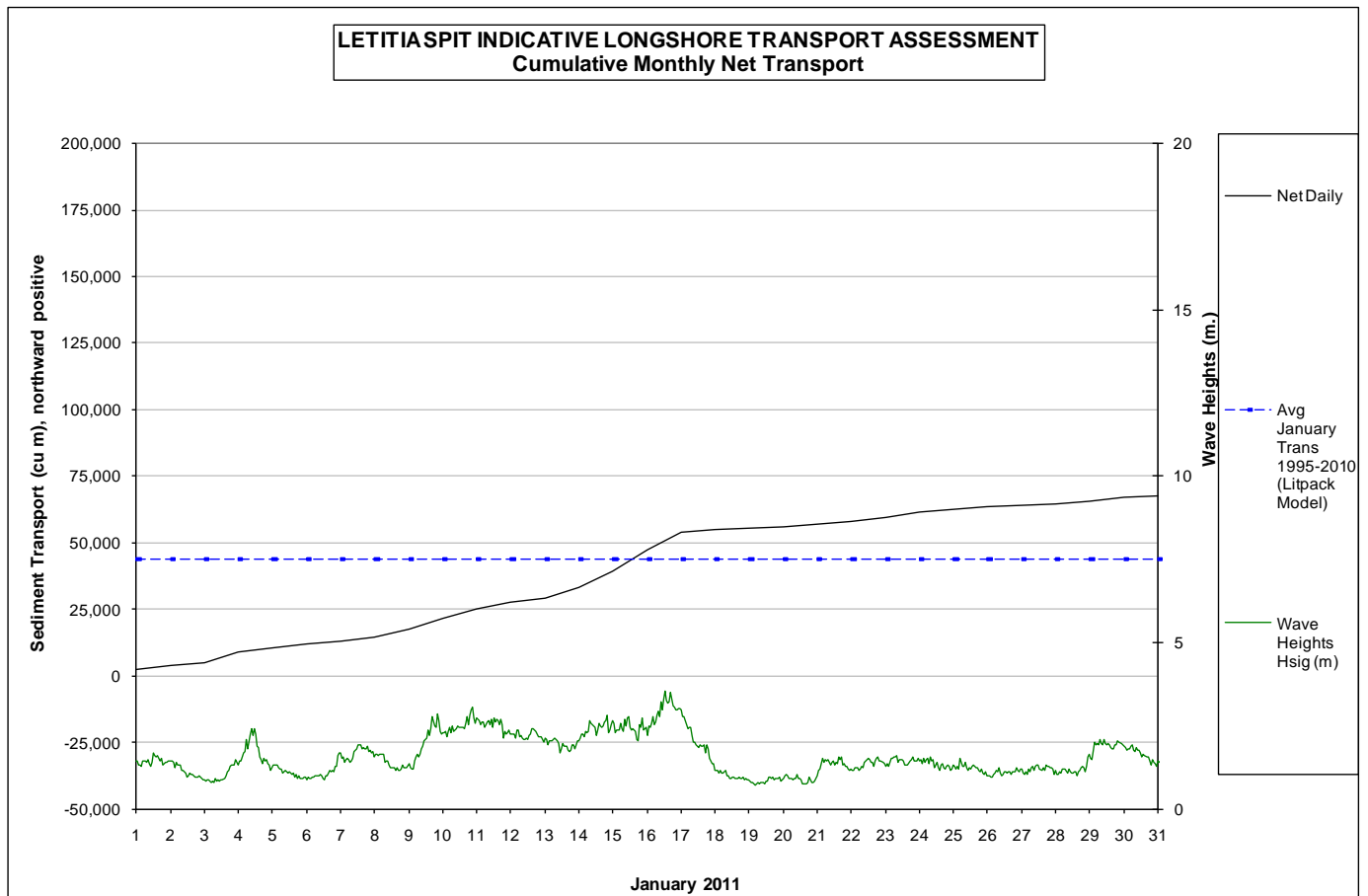


## 2. INDICATIVE LONGSHORE TRANSPORT

The graph below is based on a simplified sediment transport model and is indicative only.


January 2011 estimated natural sand transport (moving N towards Tweed entrance): 68,000m<sup>3</sup>.

This result is about 50% greater than the average sand transport quantity for the month of January.

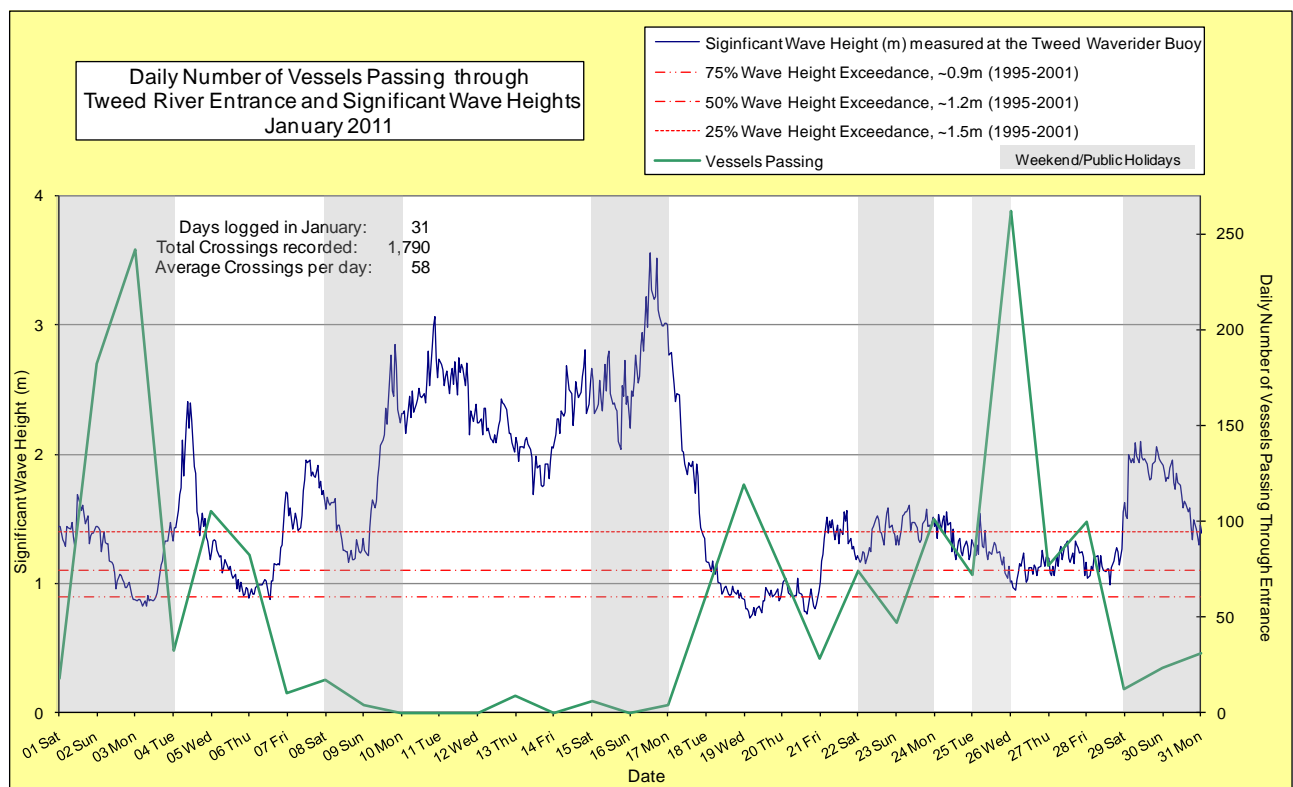
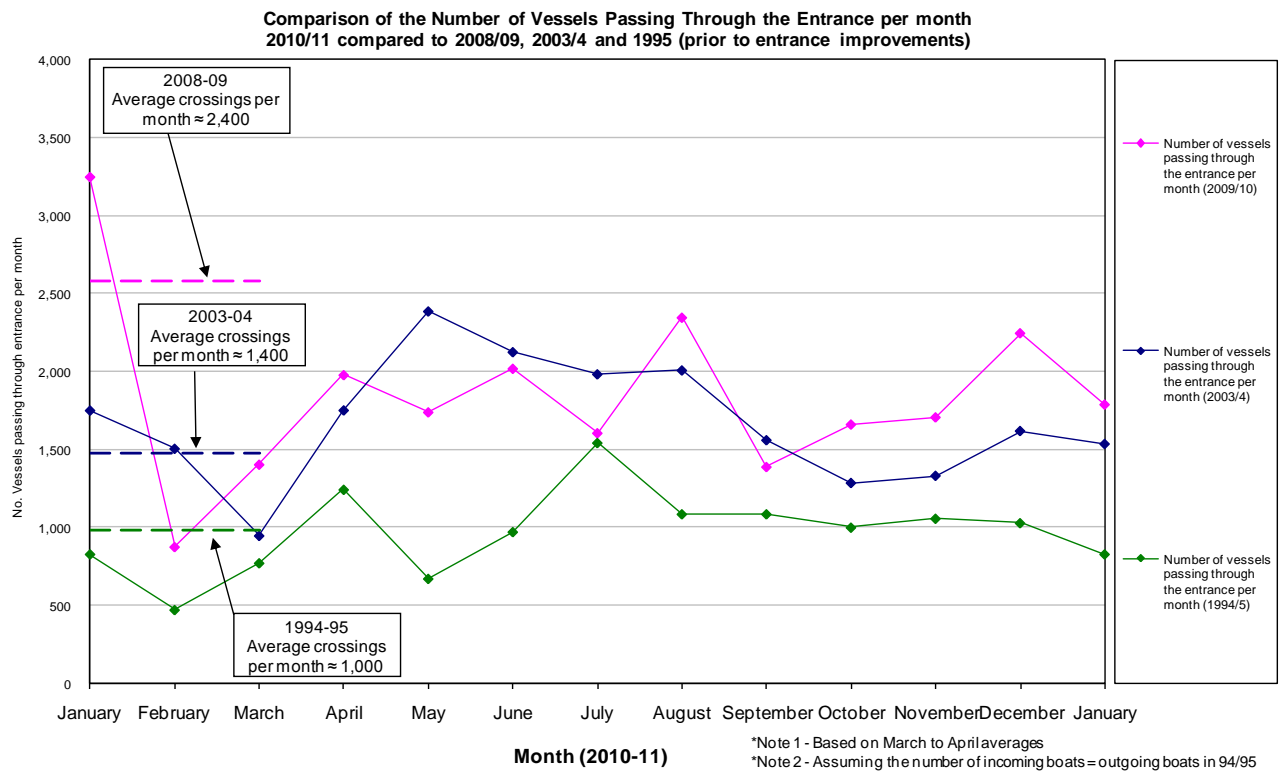


## 3. MEDIA COVERAGE

No media coverage referring to the project this month.

**4. TWEED RIVER ENTRANCE CONDITIONS****MARINE RESCUE NSW - MONITORING RESULTS**
 Weekends and public holidays

Date	Navigation Rating Impassable-----Good					Number of Boats
	Impassable	Difficulty Encountered	Some Difficulty Encountered	Relatively Good Crossing	Good Conditions	
1 <sup>st</sup>						18
2 <sup>nd</sup>						182
3 <sup>rd</sup>						242
4 <sup>th</sup>						32
5 <sup>th</sup>						105
6 <sup>th</sup>						82
7 <sup>th</sup>						10
8 <sup>th</sup>						17
9 <sup>th</sup>						4
10 <sup>th</sup>						0
11 <sup>th</sup>						0
12 <sup>th</sup>						0
13 <sup>th</sup>						9
14 <sup>th</sup>						0
15 <sup>th</sup>						6
16 <sup>th</sup>						0
17 <sup>th</sup>						4
18 <sup>th</sup>						60
19 <sup>th</sup>						119
20 <sup>th</sup>						73
21 <sup>st</sup>						28
22 <sup>nd</sup>						74
23 <sup>rd</sup>						47
24 <sup>th</sup>						101
25 <sup>th</sup>						72
26 <sup>th</sup>						262
27 <sup>th</sup>						77
28 <sup>th</sup>						100
29 <sup>th</sup>						12
30 <sup>th</sup>						23
31 <sup>st</sup>						31
Total						1,790



## 5. WAVE & SURFING CONDITIONS

Dominant swell condition: Moderate seas occurred on 11 days ( $H_s \geq 2\text{m}$ ) being 4<sup>th</sup>, 9<sup>th</sup> to 17<sup>th</sup> (inclusive) and 29<sup>th</sup> with minor storm waves ( $H_s > 3\text{m}$ ) on 10<sup>th</sup> & 16<sup>th</sup>, and average waves for rest of the month. Wave directions varied from ESE to ENE but mostly from the East.

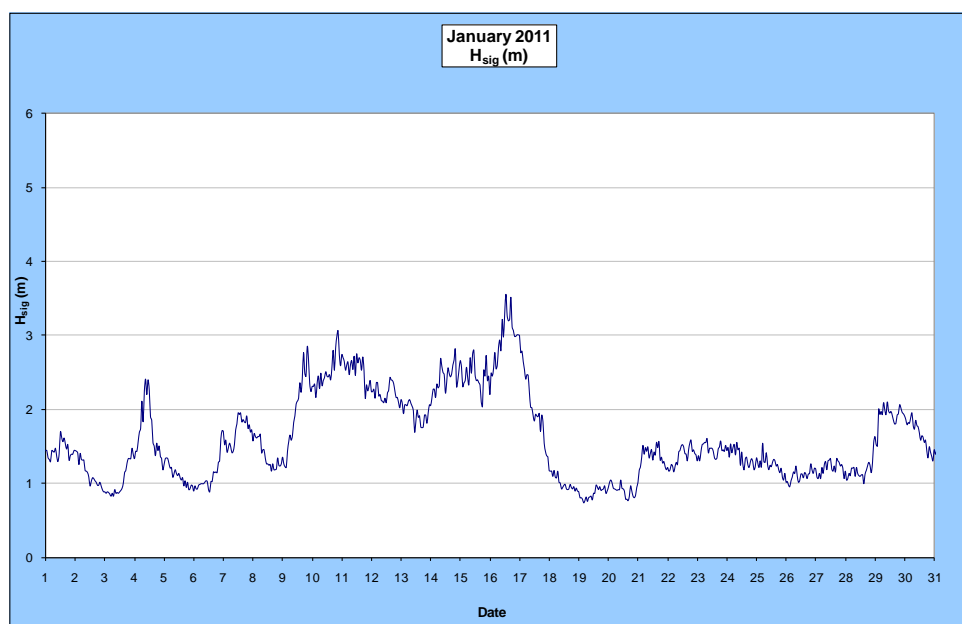
High sea events: 3.0m on 10<sup>th</sup> and 3.56m on 16<sup>th</sup>

Monthly minimum significant wave height: 0.73m on 19<sup>th</sup> January

Monthly maximum significant wave height: 3.56m on 16<sup>th</sup> January

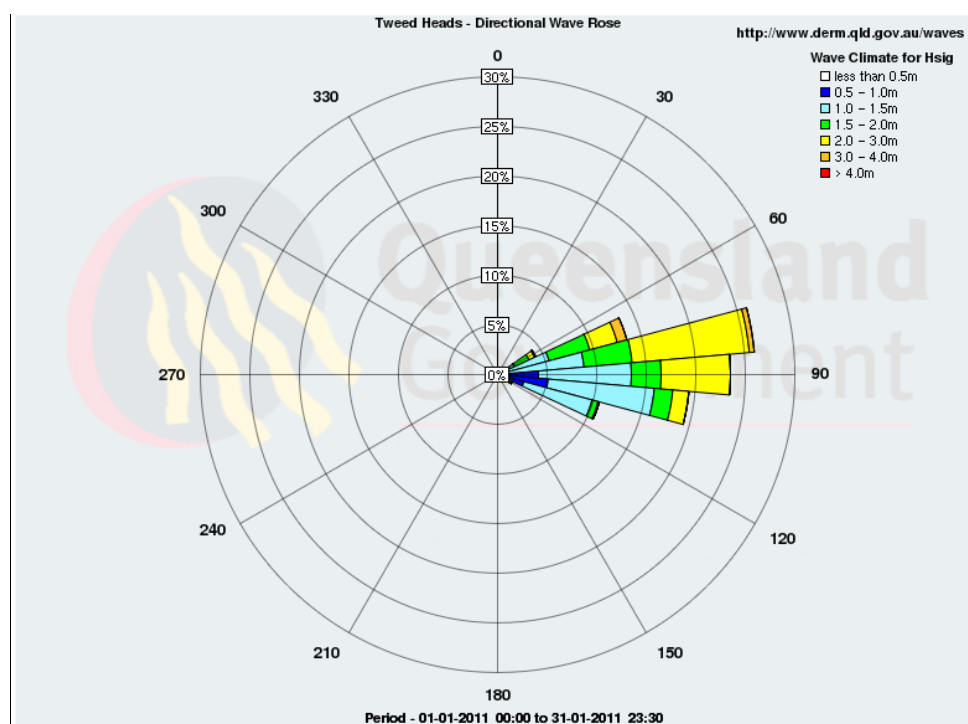
Number of days on which waves were below 1.0 m: 9 days

Number of days on which waves were above 2.0 m: 11 days (Source: Tweed & Brisbane Wave Buoy; QDERM)



A link to data recorded by the Tweed Waverider Buoy is available at: <http://www.derm.qld.gov.au/waves>

## WAVE DIRECTION



Source: Queensland  
Department of Environment  
and Resource Management

## UPCOMING SURF AND SURF LIFESAVING EVENTS

- 2011 Qld State Board Riding champs, 5 & 6 February 2011, Currumbin
- Qld Cup (Rd 3) – Surf Boats, 19 February 2011, Tugun
- U8-U10 Little Dudes, 21 November 2010 to 12 February 2011, Coolangatta
- Quicksilver Pro and Roxy Pro Surf Riding, 26 February 2011 to 9 March 2011, Coolangatta
- U15 Masters Craft Carnival, 12 March 2011, Tugun (TBC)

## PHOTOGRAPHS OF SURF CONDITIONS



Duranbah, 18 January 2011 (source: Swellnet Surf Report)



Greenmount, 20 January 2011 (source: Swellnet Surf Report)



Kirra, 24 January 2011 (source: Swellnet Surf Report)



Snapper Rocks, 31 January 2011 (source: Swellnet Surf Report)

**SURF REPORT OVERVIEW**

DATE	SURF	DIRECTION	COMMENTS
18	Clean, 0.3-0.6m	E	Smallest we have seen in almost 2 weeks.
19	Bumpy, 0.3-0.6m	E	Odd beachbreak along the coast
20	Clean, 0.3-0.6m	ESE	Frequent 2 footers at the swell magnets to the north and south ends of the coast and further south of the border.
21	Bumpy, 0.6m	SE	Lots of small, weak lumps coming through.
24	Glassy, 0.9m	ESE	A ripper of a morning on the coast with fun sized smooth waves.
25	Peaky, 0.6m	ESE	Give the points a miss and head south
26	Bumpy, 0.6m	ESE	0.6m with the odd bigger one at the swell suckers.
28	Lumpy, 0.6m	E	A somewhat less consistent ocean than previous days
31	Glassy, 0.6-0.9m	E	Punchy beachbreak waves just waiting for a working over

**Source: Swellnet - Coolangatta Surf Report**

Generally, January experienced moderate to average conditions.

**END**