

TRESBP ENVIRONMENTAL MONITORING SUMMARY

FEBRUARY 2011

OVERVIEW

In February, 2011:

- 23,080 m³ of sand was pumped to Snapper Rocks East and 6,460 m³ was pumped onto Duranbah Beach.
- The estimated amount of sand moving north towards the Tweed River Entrance by natural processes was about 29,000 m³ (this is only about 50% of the February average).
- There were no media articles referring to the project.
- Sea conditions were calm to slightly higher than average over the month with this being 2nd calmest February recorded for 16 years.
- Entrance conditions were reasonable most of the month (especially weekends) with 2,131 boat crossings recorded (this is about 30% greater than the February average).

1. SAND PUMPING & DREDGING

Sand Delivery February 2011

Pumped:	29,540m ³
Dredged:	0m ³
Total:	29,540m ³

Sand Delivery January to February 2011 (YTD)

Pumped:	65,262m ³
Dredged:	0m ³
Total:	65,262m ³

Sand Delivery January to February 2010

Pumped:	64,950m ³
Dredged:	0m ³
Total:	64,950m ³

Stage II Sand Delivery May 2000 to January 2011

Pumped:	5,911,722m ³
Dredged:	2,038,900m ³
Total:	7,950,622m ³



Department of **Environment**
and **Resource Management**

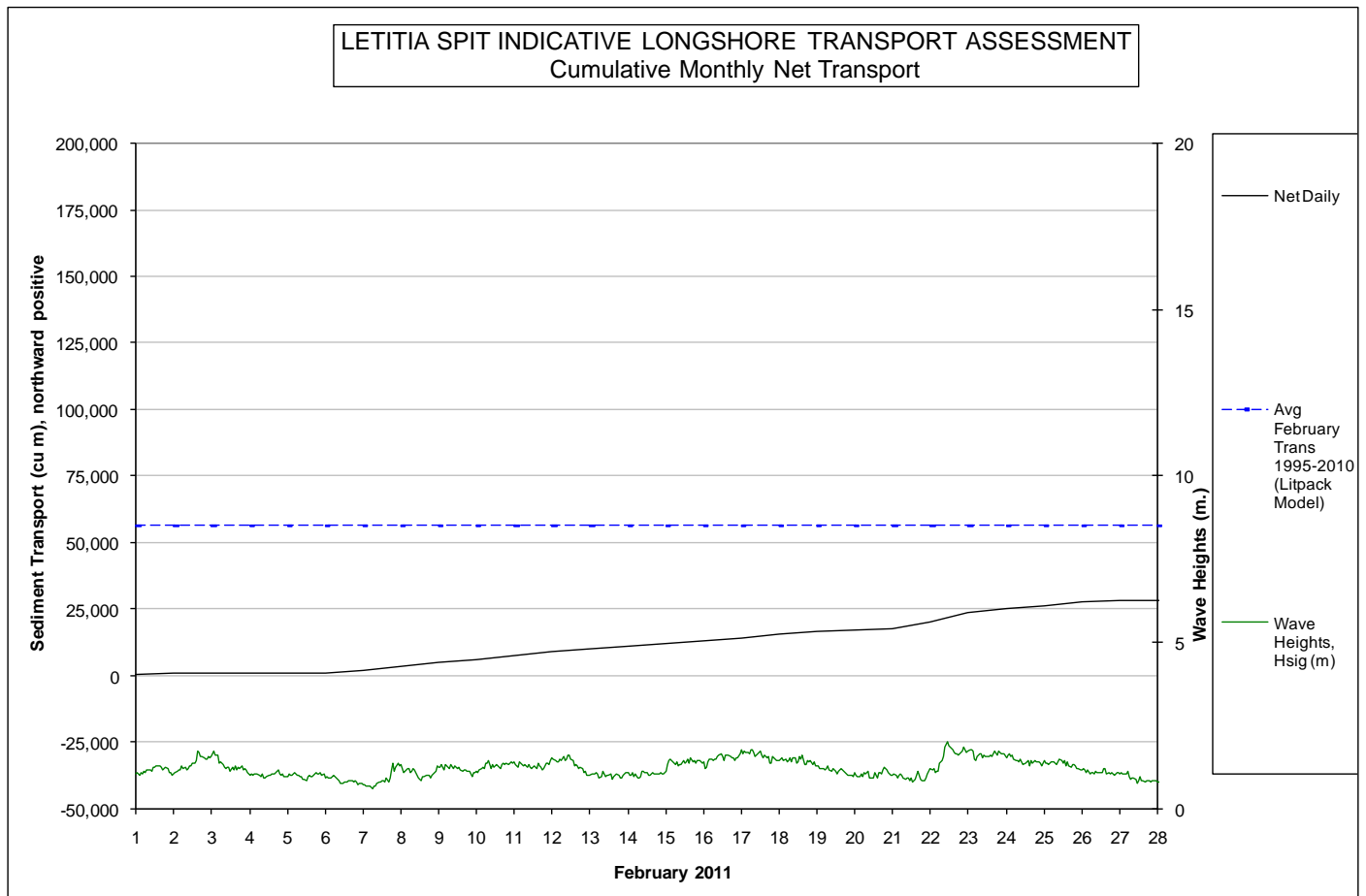


2. INDICATIVE LONGSHORE TRANSPORT

The graph below is based on a simplified sediment transport model and is indicative only.


February 2011 estimated natural sand transport (moving N towards Tweed entrance): 29,000m³.

This result is only about 50% of the average sand transport quantity for the month of February.

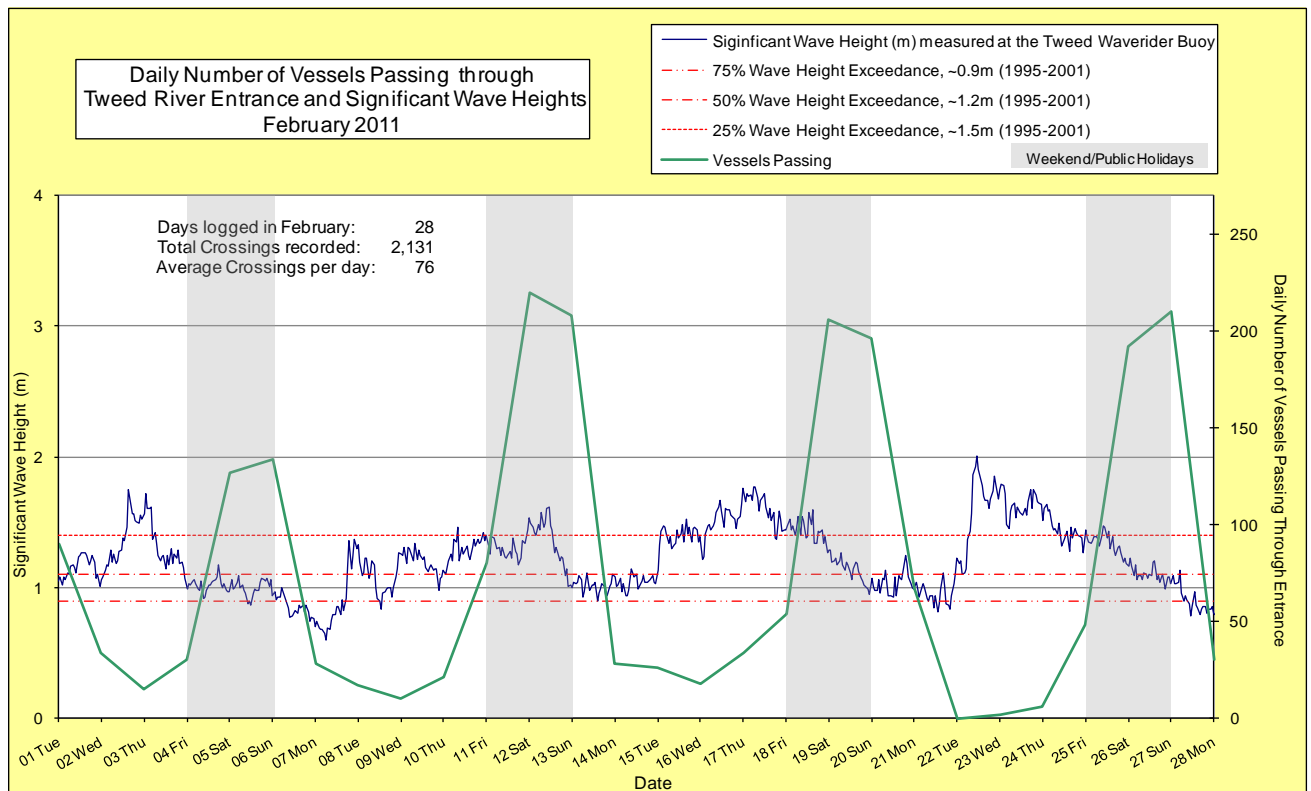
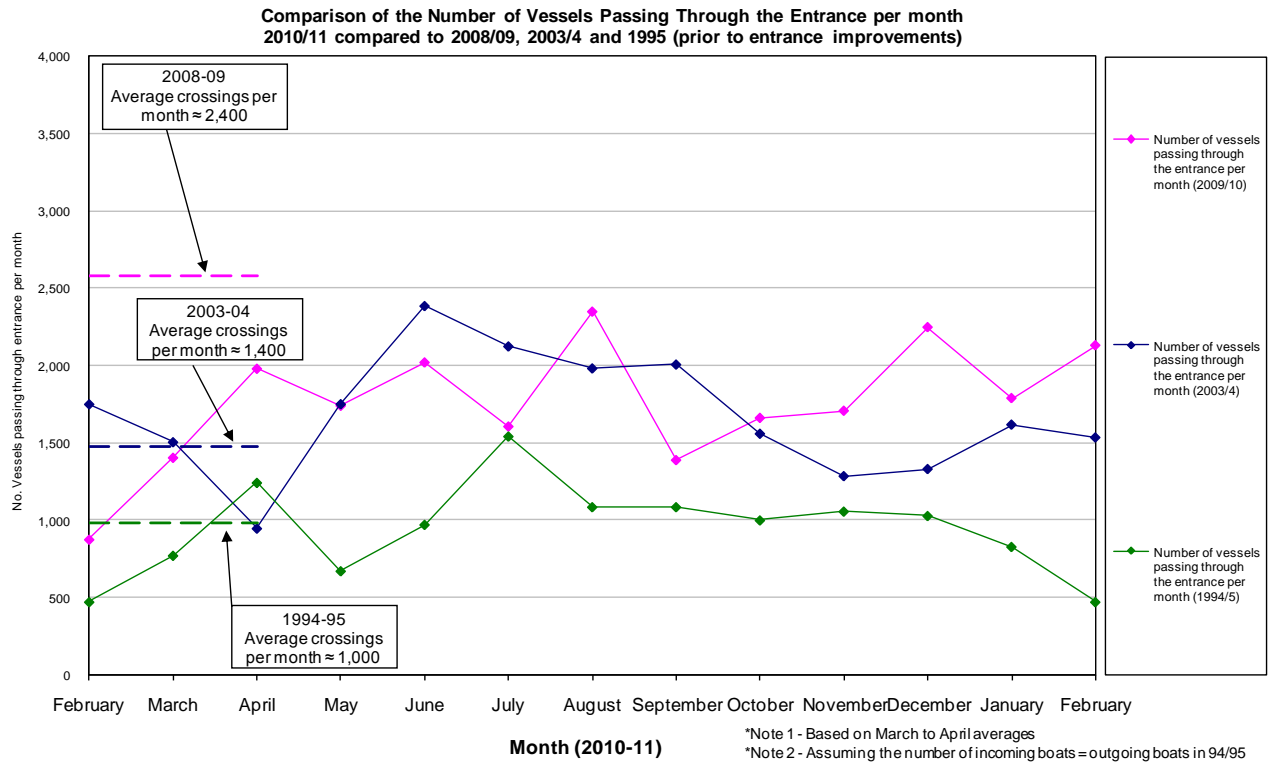


3. MEDIA COVERAGE

No media coverage referring to the project this month.

4. TWEED RIVER ENTRANCE CONDITIONS**MARINE RESCUE NSW - MONITORING RESULTS**
 Weekends and public holidays

Date	Navigation Rating Impassable-----Good					Number of Boats
	Impassable	Difficulty Encountered	Some Difficulty Encountered	Relatively Good Crossing	Good Conditions	
1 st						90
2 nd						34
3 rd						15
4 th						30
5 th						127
6 th						134
7 th						28
8 th						17
9 th						10
10 th						21
11 th						80
12 th						220
13 th						208
14 th						28
15 th						26
16 th						18
17 th						34
18 th						54
19 th						206
20 th						196
21 st						67
22 nd						0
23 rd						2
24 th						6
25 th						48
26 th						192
27 th						210
28 th						30
					Total	2,131

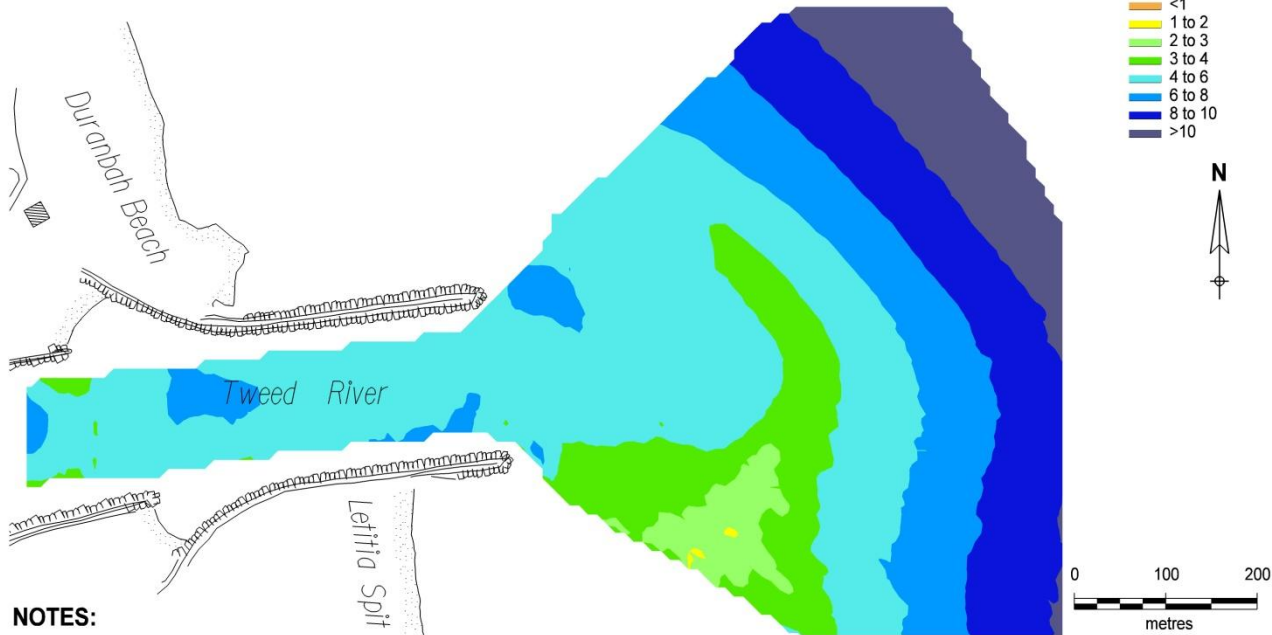


TWEED RIVER ENTRANCE AS AT 19 JANUARY 2011

WARNING: Changes in bed and channel contours could occur rapidly due to waves and currents. Extreme caution should be used when navigating this entrance.

Seabed contours show average depths in metres below Tweed River Hydro Datum (approx ISLW), not clearance depths.

LEGEND
Average Depths in metres
below Tweed River Hydro Datum



NOTES:

1. Survey information collected by Michel Group Services on 19 January 2011 for the Tweed River Entrance Sand Bypassing Project.
2. Surveys are undertaken to note the results of dredging, and monitor the quantities of sand infilling that may occur.

TWEED RIVER ENTRANCE SAND BYPASSING PROJECT



Land & Property
Management Authority

The Tweed River Entrance Sand Bypassing Project is a joint project of the New South Wales and Queensland Governments, with the support of the Gold Coast City Council, and in conjunction with the Tweed Shire Council.

Department of Environment
and Resource Management



Queensland Government

5. WAVE & SURFING CONDITIONS

Dominant swell condition: Typically average wave heights, but ranging from calm to slightly higher than average (0.6-2 m). 2nd calmest February recorded for 16 years. Wave directions varied from ESE to ENE, but mostly from the East to ESE

High sea events: 2.06m

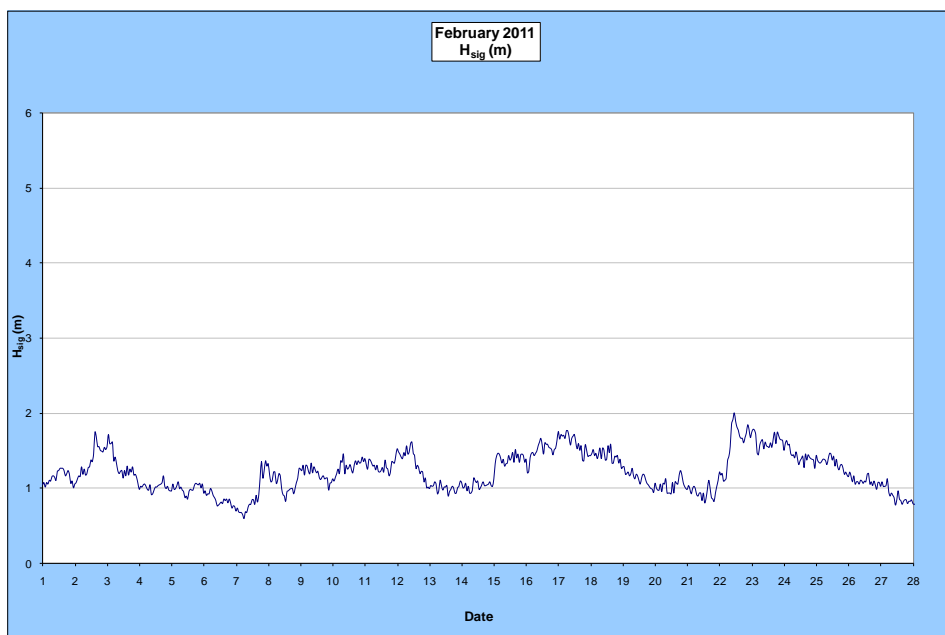
Monthly minimum significant wave height: 0.6m on 7th February

Monthly maximum significant wave height: 2.06m on 22nd February

Number of days on which waves were below 1.0 m: 14 days

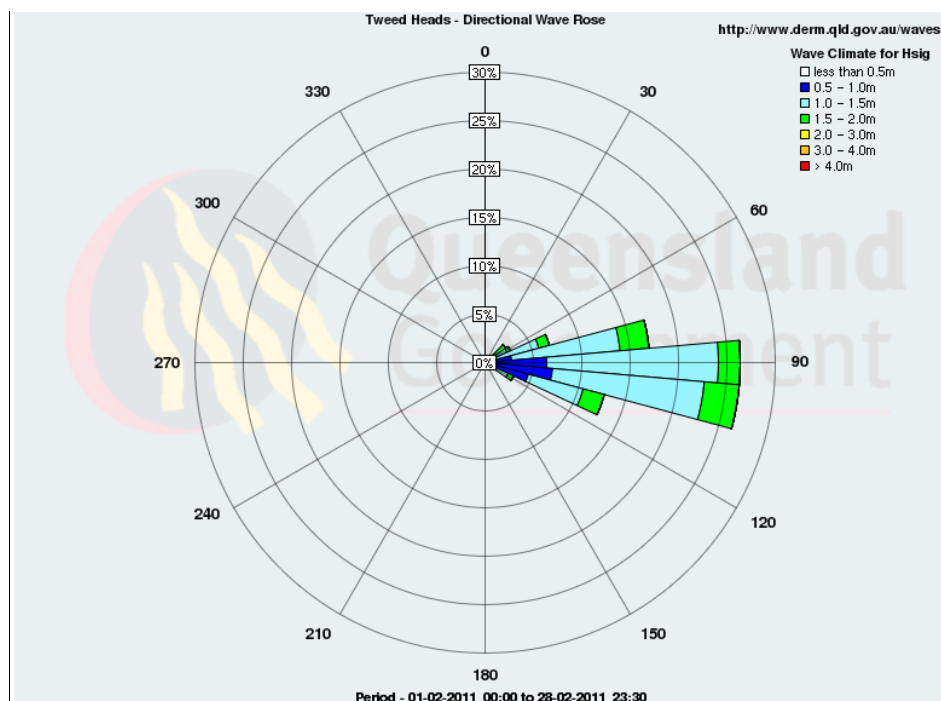
Number of days on which waves were above 2.0 m: 1 day

(Source: Tweed & Brisbane Wave Buoy; QDERM)



A link to data recorded by the Tweed Waverider Buoy is available at: <http://www.derm.qld.gov.au/waves>

WAVE DIRECTION



Source: Queensland Department of Environment and Resource Management

UPCOMING SURF AND SURF LIFESAVING EVENTS

- Quicksilver Pro and Roxy Pro Surf Riding, 26 February 2011 to 9 March 2011, Coolangatta
- Student Surfing Festival, 19-20 March 2011, Gold Coast Qld
- Junior Qld Championships, 18 -20 March 2011, Kirra
- Qld State, Championships, 25–27 March 2011, Kirra
- Aussie Titles 4-10 April 2011, Kirra

PHOTOGRAPHS OF SURF CONDITIONS



Duranbah, 1 February 2011 (source: Swellnet Surf Report)



Rainbow Bay, 7 February 2011 (source: Swellnet Surf Report)



Greenmount, 8 February 2011 (source: Swellnet Surf Report)



Snapper Rocks, 9 February 2011 (source: Swellnet Surf Report)



Snapper Rocks, 25 February 2011 (source: *Swellnet Surf Report*)



Snapper Rocks, 25 February 2011 (source: *Swellnet Surf Report*)



Snapper Rocks, 25 February 2011 (source: *Swellnet Surf Report*)



Snapper Rocks, 26 February 2011 (source: *Quicksilver Pro*)

SURF REPORT OVERVIEW

DATE	SURF	DIRECTION	COMMENTS
1	Glassy, 0.3-0.6m	E	Not a lot to get excited about today but still enough for a grovel or longboard
2	Lumpy, 0.6m	ENE	Lumpy short period swell without a lot of power
3	Lumpy, 0.9-1.5m	NNE	A generous increase in swell by the end of yesterday as the influence of TC Yasi became evident.
7	Clean, 0.3m	S	Clean conditions exist at the south end of the coast, not a lot of surf.
8	Clean, 0.6m	S	Still in the 0.6m range but clean and fun for the shortboard at the south swell magnets
9	Clean, 0.6m	SSE	A consistent short period south swell all coming together to keep your wave count up
10	Clean, 0.6m	S	The south swell magnets are looking very surfable this morning
14	Clean, 3.0-0.6m	E	Look around to find an attractive bank may provide some rewards
15	Clean, 0.6m	ESE	Playful beachbreaks at the southern end of the coast
16	Glassy, 0.6-0.9m	E	Clean as a whistle on the south end this morning with consistent peaks
17	Lumpy, 0.6-0.9m	E	Oily conditions have given way to more of a lump with the wind shifting SE
18	Clean, 0.9m	E	Conditions across the coast are spot on this morning
21	Clean, 0.3-0.6m	E	Small, clean leftover swell for a grovel or the longboard on the points
22	Choppy, 0.6m	SE	An increase may be on the cards for later in the day, don't rush out.
24	Clean, 0.6-0.9m	SSE	Duranbah, and other south swell magnets are 0.9m+ with the odd 1.2m.
25	Clean, 0.9m	ESE	Today definity stands as the jewel in the crown
28	Lumpy, 0.3-0.45m	E	Poor day of waves along the Gold Coast, thanks to a tiny swell.

Source: Swellnet - Coolangatta Surf Report

Generally, February experienced calm to slightly higher than average conditions. It was 2nd calmest February recorded for 16 years.

END