

TRESBP ENVIRONMENTAL MONITORING SUMMARY

AUGUST 2010

OVERVIEW

In August, 2010:

- 11,582 m³ of sand was pumped to Snapper Rocks East.
- There were no media articles referring to the project.
- Sea conditions were calm to average with 25 days of waves less than one metre and two days of moderate seas with waves up to 2m. There was a minor storm with waves up to 3m.
- A total of 2,348 boat crossings were recorded (about 20% greater than the August average).
- The estimated amount of sand moving north towards the Tweed River Entrance by natural processes was about 30,000m³ (about 62% of the August average).

1. SAND PUMPING & DREDGING

Sand Delivery August 2010

Pumped:	11,582m ³
Dredged:	0m ³
Total:	11,582m ³

Sand Delivery January to August 2010 (YTD)

Pumped:	268,923m ³
Dredged:	0m ³
Total:	268,923m ³

Sand Delivery January to August 2009

Pumped:	363,773m ³
Dredged:	0m ³
Total:	363,773m ³

Stage II Sand Delivery May 2000 to August 2010

Pumped:	5,684,052m ³
Dredged:	2,038,900m ³
Total:	7,722,952m ³



Land & Property
Management Authority

Department of Environment
and Resource Management



Queensland Government

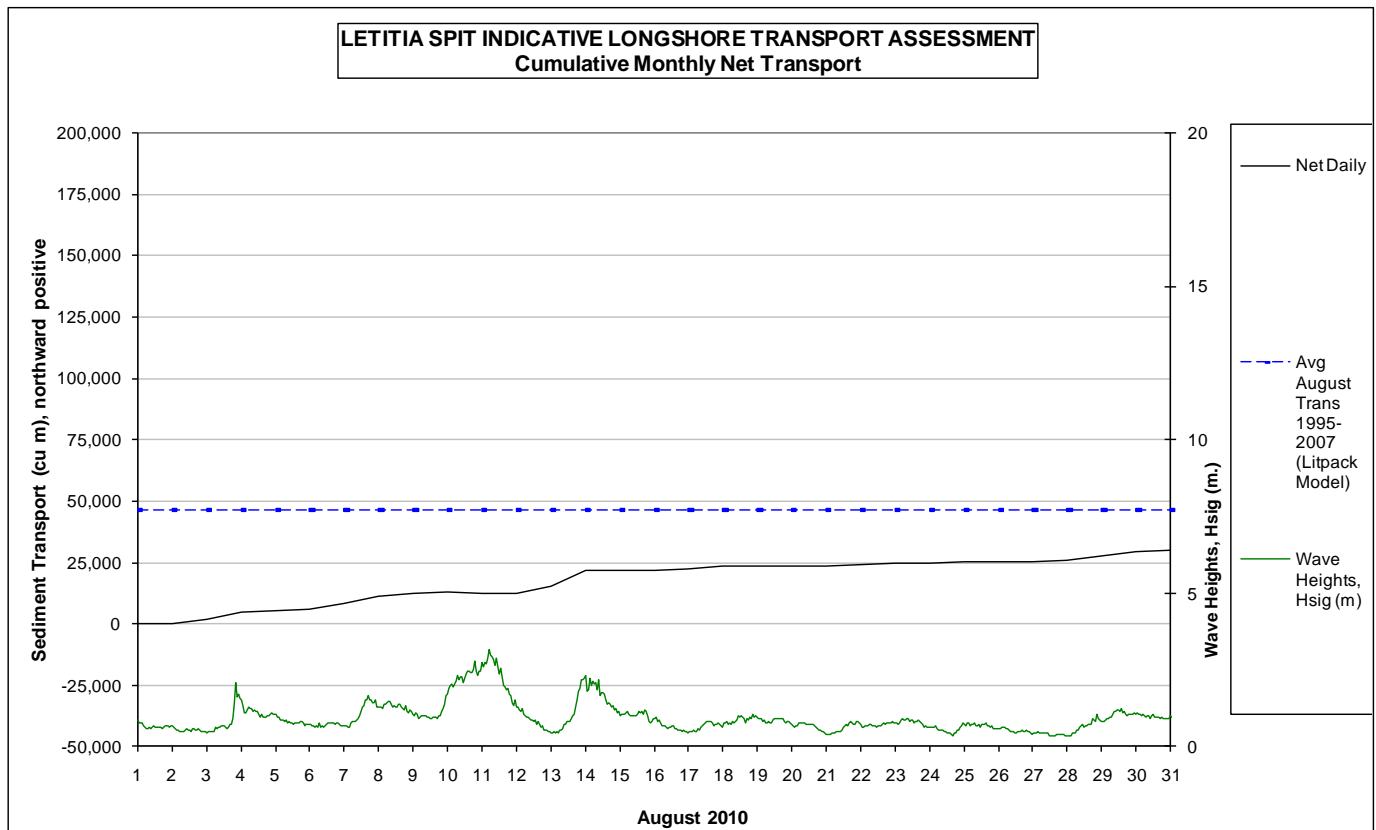


2. INDICATIVE LONGSHORE TRANSPORT

The graph below is based on a simplified sediment transport model and is indicative only.

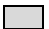
August 2010 estimated natural sand transport (moving N towards Tweed entrance): 30,000 m³.

This result is about 62 % of the average sand transport quantity for the month of August.



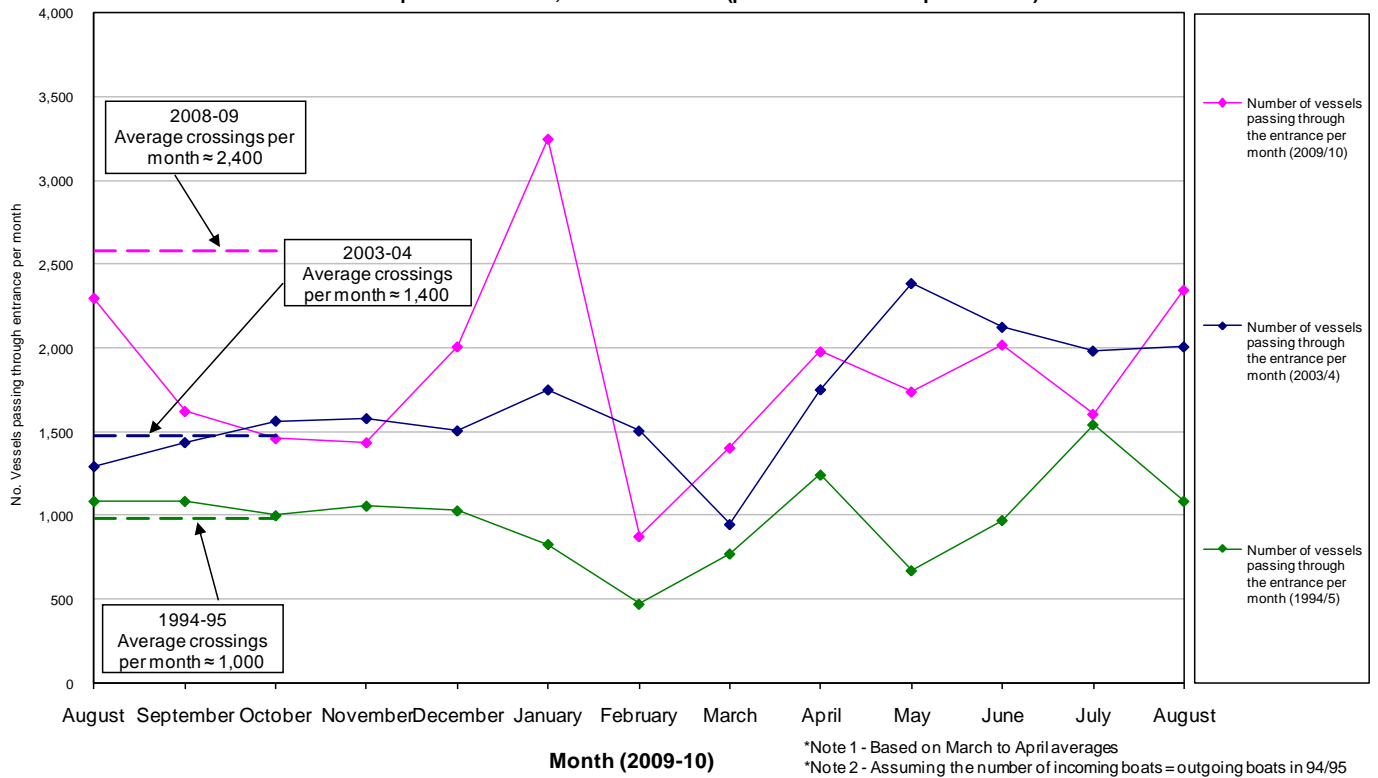
3. MEDIA COVERAGE

No media coverage referring to the project this month.

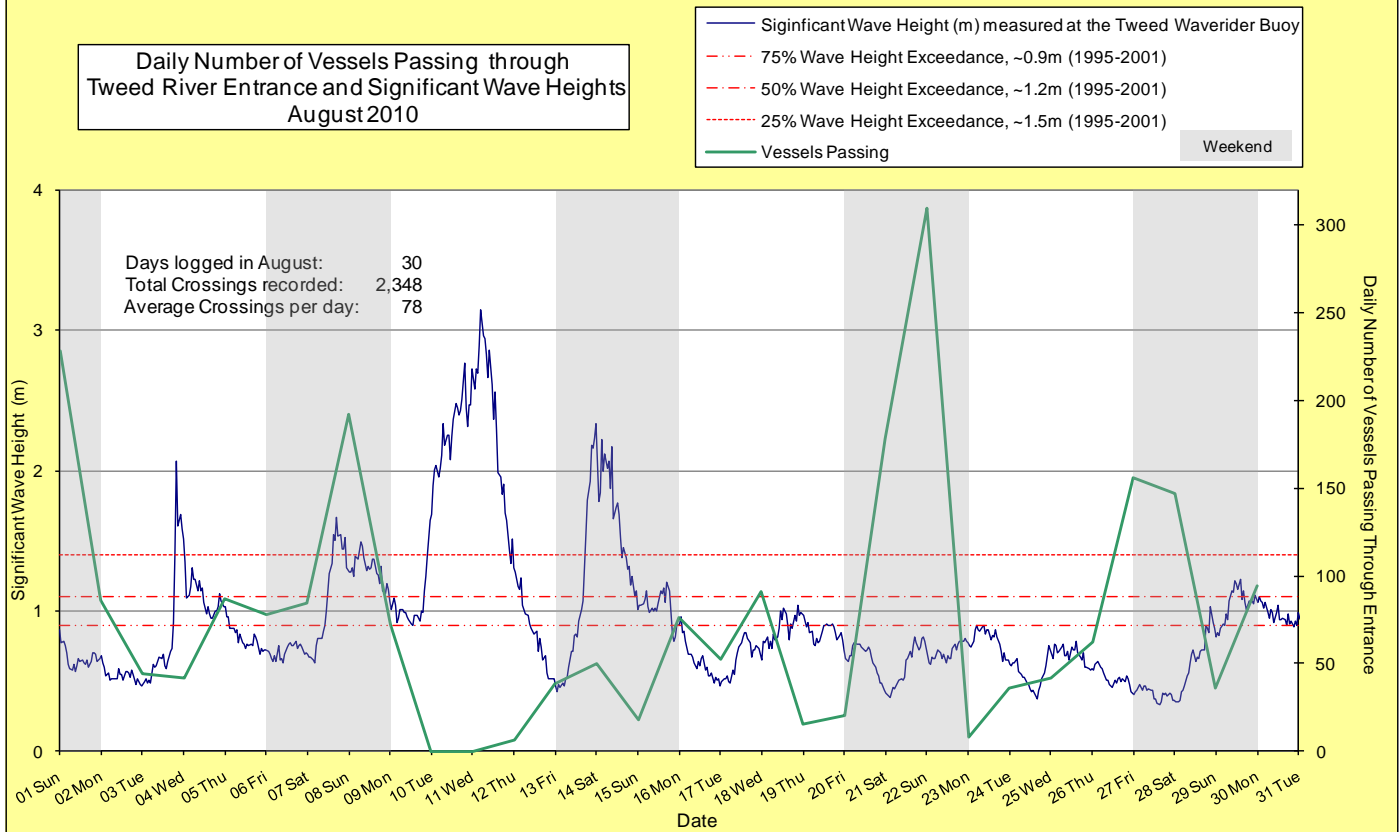
4. TWEED RIVER ENTRANCE CONDITIONS**VOLUNTEER MARINE RESCUE MONITORING RESULTS**
 Weekends and public holidays

Date	Navigation Rating Impassable-----Good					Number of Boats
	Impassable	Difficulty Encountered	Some Difficulty Encountered	Relatively Good Crossing	Good Conditions	
1 st						
2 nd						228
3 rd						86
4 th						44
5 th						42
6 th						87
7 th						78
8 th						84
9 th						192
10 th						72
11 th						0
12 th						0
13 th						6
14 th						38
15 th						50
16 th						18
17 th						76
18 th						52
19 th						91
20 th						15
21 st						20
22 nd						178
23 rd						310
24 th						8
25 th						36
26 th						42
27 th						62
28 th						156
29 th						147
30 th						36
31 st						94
					Total	2348

Comparison of the Number of Vessels Passing Through the Entrance per month
2009/10 compared to 2008/09, 2003/4 and 1995 (prior to entrance improvements)



Daily Number of Vessels Passing through
Tweed River Entrance and Significant Wave Heights
August 2010



5. WAVE & SURFING CONDITIONS

Dominant swell condition: Generally calm to average seas, with a minor storm on 11th and moderate seas on 3rd and 14th. Lower than average August transport (about 62% of average). Wave directions varied from NE to SE.

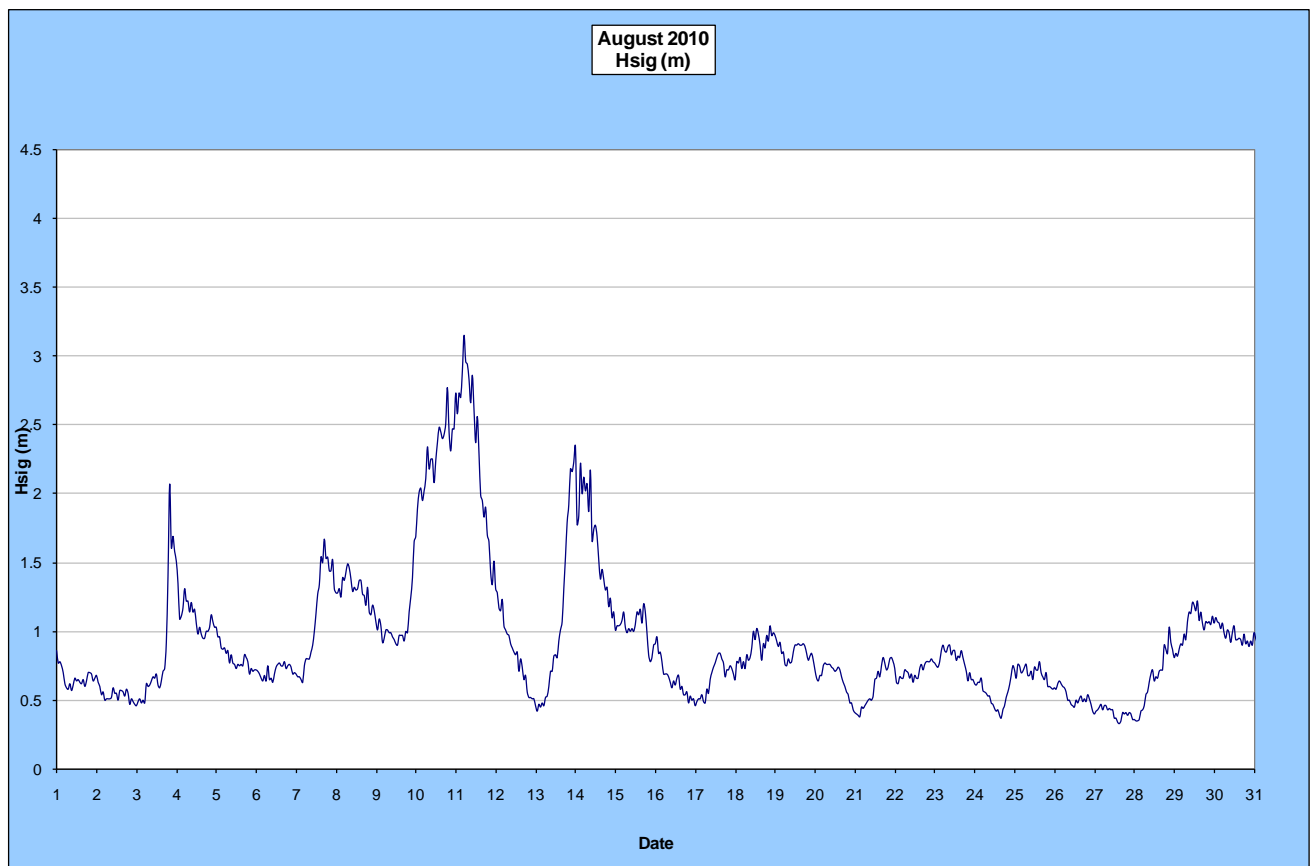
High sea events: 3.15m

Monthly minimum significant wave height: 0.33m on 27 August

Monthly maximum significant wave height: 3.15m on 11 August

Number of days with waves below 1.0 m: 25 days

Number of days with waves above 2.0 m: 2 days (Source: Tweed & Brisbane Wave Buoy; QDERM)



A link to data recorded by the Tweed Waverider Buoy is available at: <http://www.derm.qld.gov.au/waves>

UPCOMING SURF AND SURF LIFESAVING EVENTS

- Rush Surf Queensland State Junior Titles 4 & 5 September 2010, Gold Coast
- Ocean & Earth Teenage Rampage 18 & 19 September 2010, Gold Coast
- Kellog's Trial 18 & 19 September 2010, Tugun
- KSLC Open Day 26 September 2010
- U8 to U14 Surf Carnival (SSCB clubs) 16 October 2010, Rainbow Beach
- U8-U10 Teams Carnival (PDB Clubs) 31 October 2010, Kirra

PHOTOGRAPHS OF SURF CONDITIONS

Conditions for the month were generally calm as indicated in the photographs below.



Duranbah, 5 August 2010 (source: LPMA)



Duranbah, 5 August 2010 (source: LPMA)



Coolangatta, 5 August 2010 (source: LPMA)



Kirra, 5 August 2010 (source LPMA)

SURF REPORT OVERVIEW

Generally, August was a calm month with calm to average height waves and light winds. Storm conditions prevailed from 10th to 12th with gale force winds and NE swell.

END