

# TRESBP ENVIRONMENTAL MONITORING SUMMARY

## SEPTEMBER 2010

### OVERVIEW

In September, 2010:

- 27,708 m<sup>3</sup> of sand was pumped to Snapper Rocks East.
- There were no media articles referring to the project.
- Sea conditions were calm to average with 16 days of waves less than one metre and two days with waves up to 1.6m.
- A total of 1,389 boat crossings were recorded (about 20% fewer than the September average).
- The estimated amount of sand moving north towards the Tweed River Entrance by natural processes was about 29,000m<sup>3</sup> (about 10% greater than the September average).

### 1. SAND PUMPING & DREDGING

#### **Sand Delivery September 2010**

Pumped:	27,708m <sup>3</sup>
Dredged:	0m <sup>3</sup>
Total:	27,708m <sup>3</sup>

#### **Sand Delivery January to September 2010 (YTD)**

Pumped:	296,631m <sup>3</sup>
Dredged:	0m <sup>3</sup>
Total:	296,631m <sup>3</sup>

#### **Sand Delivery January to September 2009**

Pumped:	355,269m <sup>3</sup>
Dredged:	0m <sup>3</sup>
Total:	355,269m <sup>3</sup>

#### **Stage II Sand Delivery May 2000 to September 2010**

Pumped:	5,711,760m <sup>3</sup>
Dredged:	2,038,900m <sup>3</sup>
Total:	7,750,660m <sup>3</sup>



Land & Property  
Management Authority

Department of Environment  
and Resource Management



Queensland Government

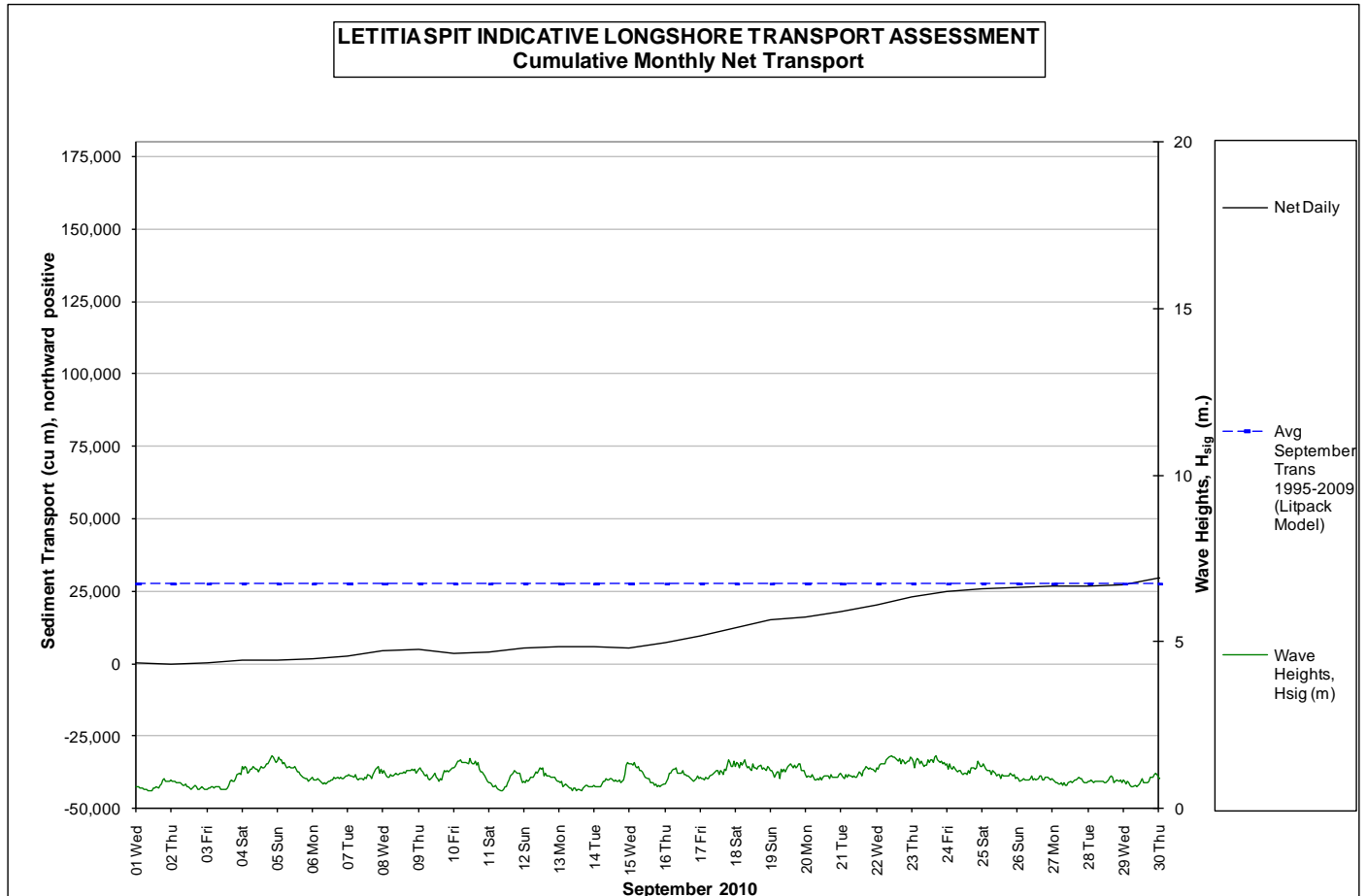


## 2. INDICATIVE LONGSHORE TRANSPORT

The graph below is based on a simplified sediment transport model and is indicative only.

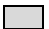
September 2010 estimated natural sand transport (moving N towards Tweed entrance): 29,000m<sup>3</sup>.

This result is about 10% greater than the average sand transport quantity for the month of September.



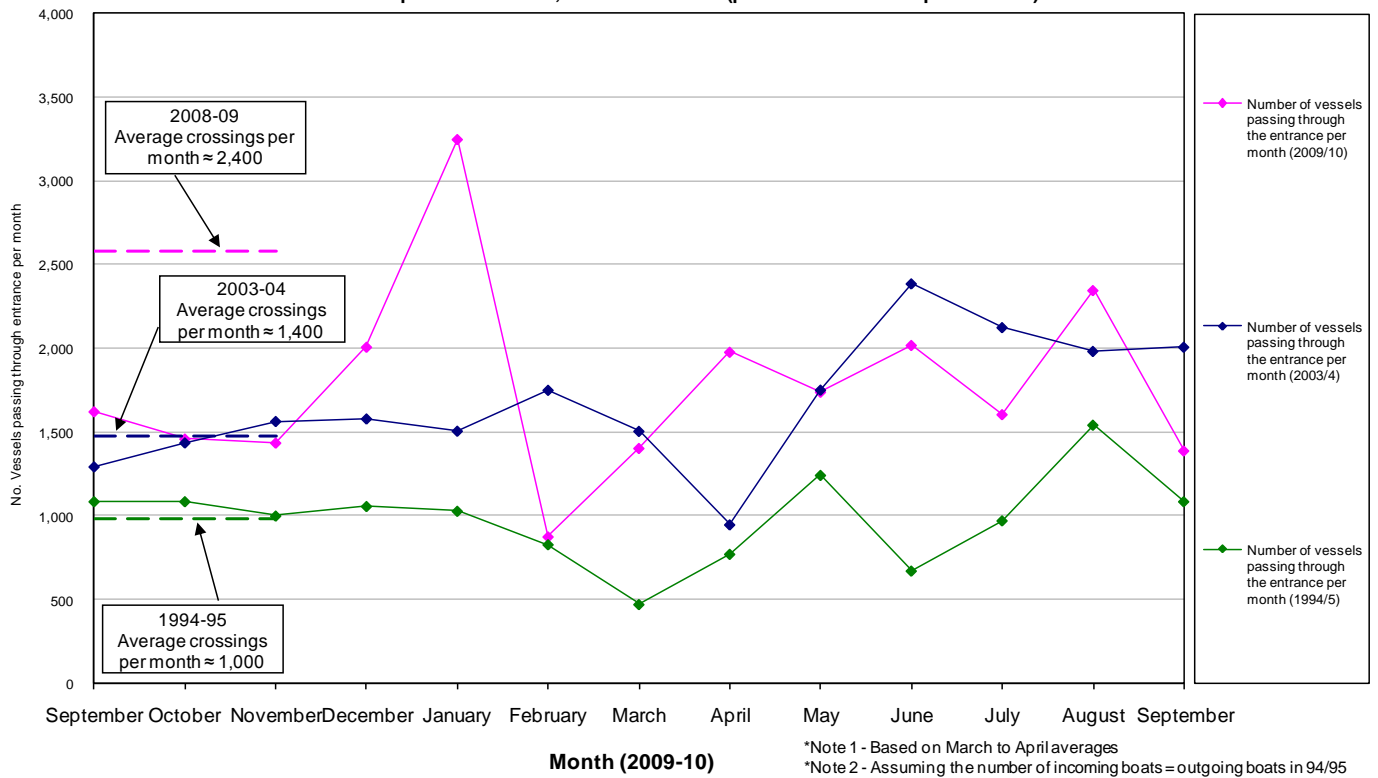
## 3. MEDIA COVERAGE

No media coverage referring to the project this month.

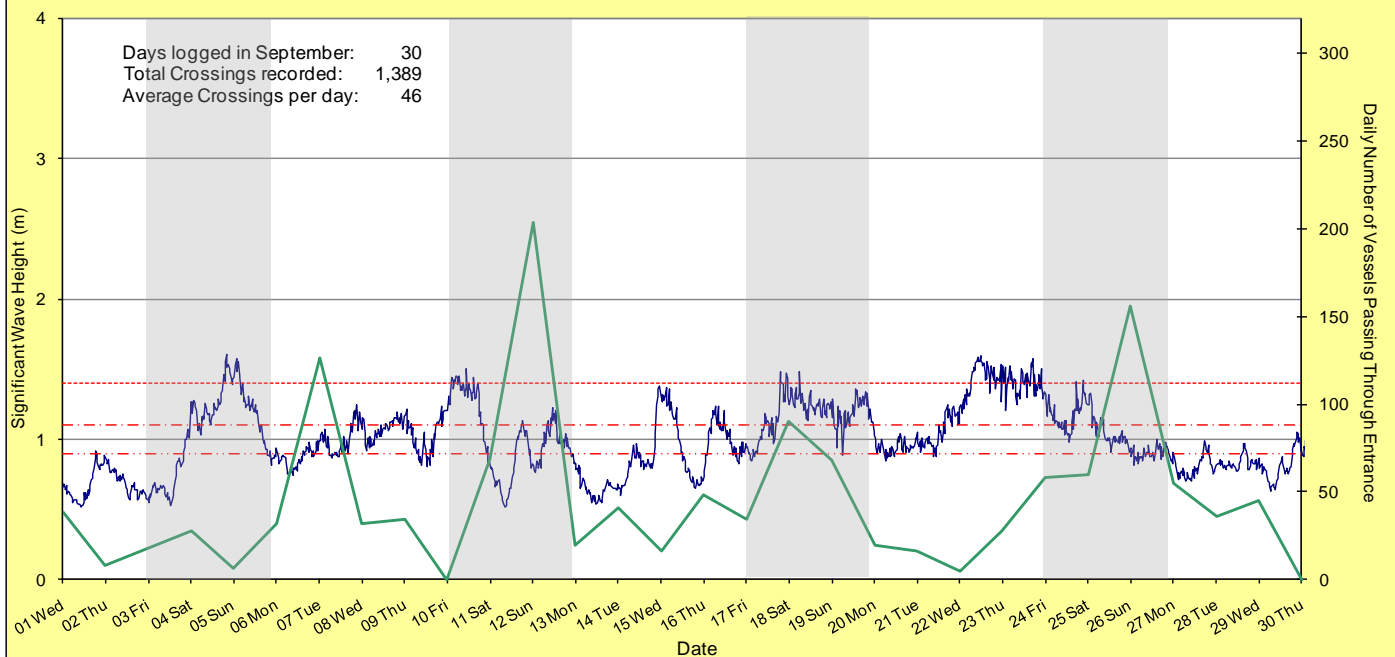
**4. TWEED RIVER ENTRANCE CONDITIONS****VOLUNTEER MARINE RESCUE MONITORING RESULTS**
 Weekends and public holidays

Date	Navigation Rating Impassable-----Good					Number of Boats
	Impassable	Difficulty Encountered	Some Difficulty Encountered	Relatively Good Crossing	Good Conditions	
1 <sup>st</sup>						38
2 <sup>nd</sup>						8
3 <sup>rd</sup>						18
4 <sup>th</sup>						28
5 <sup>th</sup>						6
6 <sup>th</sup>						32
7 <sup>th</sup>						126
8 <sup>th</sup>						32
9 <sup>th</sup>						34
10 <sup>th</sup>						0
11 <sup>th</sup>						69
12 <sup>th</sup>						204
13 <sup>th</sup>						19
14 <sup>th</sup>						41
15 <sup>th</sup>						16
16 <sup>th</sup>						48
17 <sup>th</sup>						34
18 <sup>th</sup>						90
19 <sup>th</sup>						68
20 <sup>th</sup>						19
21 <sup>st</sup>						16
22 <sup>nd</sup>						5
23 <sup>rd</sup>						28
24 <sup>th</sup>						58
25 <sup>th</sup>						60
26 <sup>th</sup>						156
27 <sup>th</sup>						55
28 <sup>th</sup>						36
29 <sup>th</sup>						45
30 <sup>th</sup>						0
Total						1,389

Comparison of the Number of Vessels Passing Through the Entrance per month  
2009/10 compared to 2008/09, 2003/4 and 1995 (prior to entrance improvements)



Daily Number of Vessels Passing through  
Tweed River Entrance and Significant Wave Heights  
September 2010



## 5. WAVE & SURFING CONDITIONS

Dominant swell condition: Generally calm to average seas, with significant wave heights ranging from 0.5m to 1.5m. Higher than average September transport by about 5%. Wave directions varied from NE to SE, but mostly ENE to ESE.

High sea events: Nil

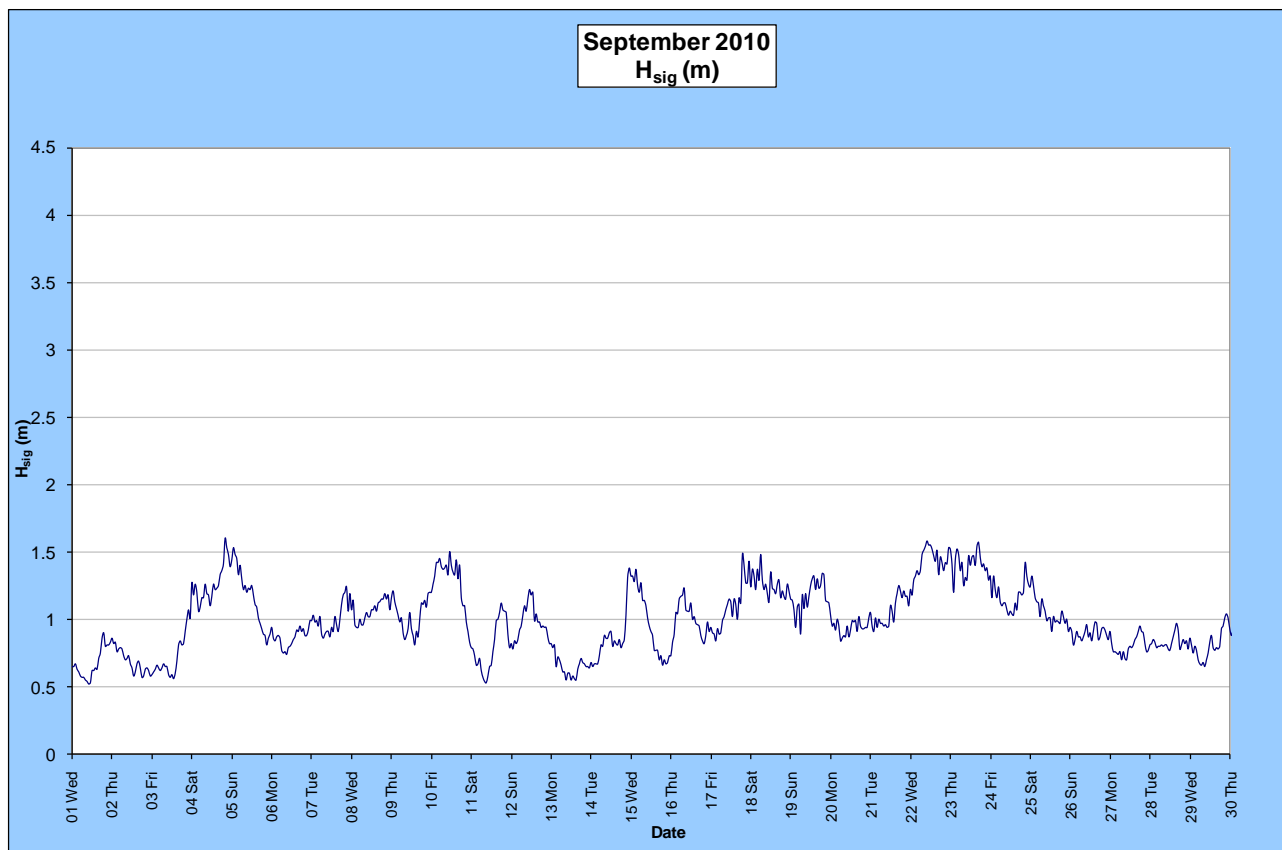
Monthly minimum significant wave height: 0.52m on 1<sup>st</sup> September

Monthly maximum significant wave height: 1.6m on 4<sup>th</sup> September

Number of days with waves below 1.0 m: 16 days

Number of days with waves above 2.0 m: Nil

(Source: Tweed & Brisbane Wave Buoy; QDERM)

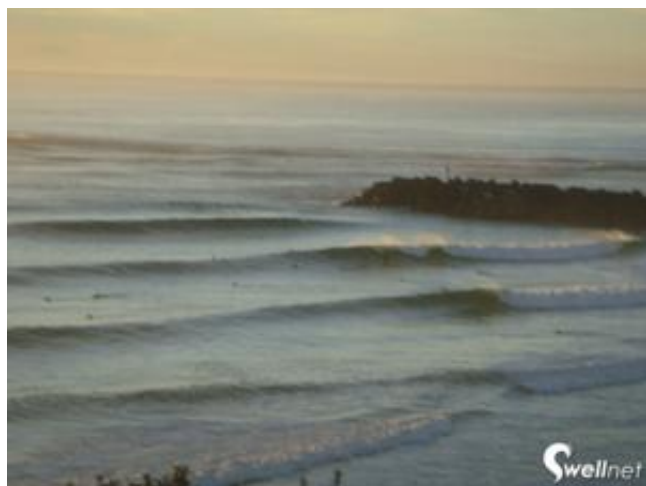


A link to data recorded by the Tweed Waverider Buoy is available at: <http://www.derm.qld.gov.au/waves>

### UPCOMING SURF AND SURF LIFESAVING EVENTS

- U8 to U14 Surf Carnival (SSCB clubs) 16 October 2010, Rainbow Beach
- U8-U10 Teams Carnival (PDB Clubs) 31 October 2010, Kirra
- Kirra Surfstock Festival, 12, 13 & 14 November 2010, Kirra
- U8-U10 Little Dudes, 21 November 2010 to 12 February 2011, Coolangatta
- U11-U14 GCCT Junior, 27 – 28 November 2010, Kirra

## PHOTOGRAPHS OF SURF CONDITIONS



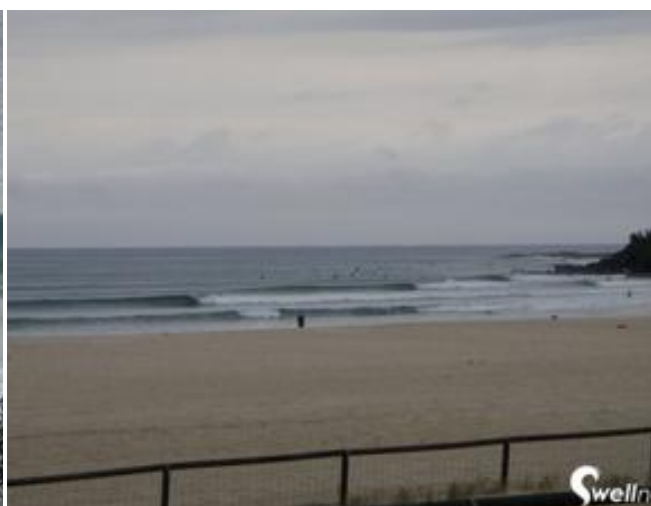
Duranbah, 16 September 2010 (source: Swellnet)



Greenmount, 16 September 2010 (source: Swellnet)



Greenmount, 20 September 2010 (source: Swellnet)



Coolangatta, 20 September 2010 (source Swellnet)



Snapper, 21 September 2010 (source Swellnet)



Snapper, 24 September 2010 (source Swellnet)

**SURF REPORT OVERVIEW**

DATE	SURF	SWELL DIRECTION	COMMENT
1	Clean, 0.3m	SE	Odd rideable wave
3	Lumpy, 0.3m	NE	Mostly unrideable
6	Clean, 0.3-0.6m	NE	Clean fun chocolate peaks. Small rideable 0.6m sets
7	Clean, 0.6m	SE	Duranbah has consistent 0.6m waves
8	Clean, 0.6m	ESE	Fun waves if you are very patient
9	Glassy, 0.6m	SE	Fun 0.6m waves
10	Peak, 0.3-0.6m	NE	Poor quality short interval waves
13	Inconsistent, 0.3m	E	Lacklustre conditions
14	Clean, 0.3m	E	Nice conditions but lots of patience to get rideable wave
15	Lumpy, 0.3-0.6m	NNE	Short period with plenty of waves
16	Glassy, 0.6m	SSE	0.9m waves at swell magnets. Conditions A <sup>+</sup>
20	Clean, 0.6m	S	Fun waves on offer. 0.3m on points
21	Clean, 0.3-0.6m	SE	Some fun waves
22	Clean, 0.6m	SE	Some rideable surf
24	Clean, 0.6m	SE	Morning of fun waves off a productive week. Plenty of rideable 0.6m waves
27	Glassy, 0.3-0.45m	E	Glassy line-ups bathed in sunshine. Is rideable at knee to waist high
29	Glassy, 0.3-0.45m	E	Glassy little runners around the place on a small east swell

**Source: Swellnet - Coolangatta Surf Report**

Generally, September was a calm month with calm to average height waves and light winds.

**END**