

TWEED SAND BYPASSING

MEETING DETAILS	
Meeting Title:	Tweed Sand Bypass Advisory Committee - Monitoring and Operations Status Update
Meeting No.:	04-2025
Date / Time:	3:00pm Wednesday 12 November 2025
Location:	VMR, Duranbah Beach (Coral St, Tweed Heads)
Attendees:	Kim Bowra - NSW TSB Project Director (chair) Councillor Gail O'Neill – Qld LGA AC member Jane Lofthouse – NSW LGA AC member Aaron Ashley – proxy for NSW Community Representative Peter Turner – Qld Community Representative Kane Nielsen –proxy for Celine Roux – Qld TSB Project Director Matthew Harry – Principal Manager TSB Yelena Shrepp – Proxy for Qld State AC member Adrian Barwick – NSW TSB team member Joshua Taylor - NSW State AC member
Absent / Apologies:	Celine Roux – Qld TSB Project Director Wayne Bartholomew – Qld Community Representative Robert Alexander - NSW Community Representative Darren Hulm - NSW Community Representative Linda Rijkenberg – Qld State AC member
Meeting notes prepared by:	JT
File Path:	M.07.01

AGENDA				
Item	Description	Start	Finish	Duration
1	Welcome, apologies and AC updates.	3.00	3.05	5 mins
2	Advisory Committee member and community reports	3.05	3.15	10 mins
3	Project monitoring and operational overview <ul style="list-style-type: none"> • Pumping operations • Environmental Monitoring / beach observations • Entrance conditions, usage and survey • TSB projects and enhancements • Communications 	3.15	4.00	45 mins
4	Committee Comments / General Business (All)	4.00	4.30	30 mins

TWEED SAND BYPASSING

MEETING NOTES	
Item:	Description
1.	<p><u>Welcome, apologies and AC updates</u></p> <ul style="list-style-type: none"> - Acknowledgement of Country by KB. - Introduction of attendees. - Aaron Ashley (Point Danger VMR) is welcomed by the committee.
2.	<p><u>Advisory Committee member and community reports</u></p> <p>Aaron Ashley – proxy for NSW Community Representative</p> <ul style="list-style-type: none"> - The build-up of sand on the south side of the Tweed River Entrance is the main concern. - When VMR is carrying out rescues, often the vessel will have to enter and exit the entrance straight on without turning to the north – this is especially the case at night and when under tow. <p>Kane Nielsen – Qld TSB team member</p> <ul style="list-style-type: none"> - It has been observed that the bar on the Tweed River Entrance developed through Winter. The recent northerly conditions have flattened the bar and pushed it back toward the south. <p>Councillor Gail O'Neill – Qld LGA AC member</p> <ul style="list-style-type: none"> - A lagoon has formed at Kirra and is very popular with swimmers. - Currumbin Beach has not yet fully recovered following the impacts of TC Alfred. - The City's project to renew the Currumbin south training wall has commenced. - The City is replacing the stairs at Currumbin hill. - There have been updates made to the Snapper Rocks master plan. An important change is including a ring-road to enable the surf to be viewed from vehicles. <p>Peter Turner – Qld Community Representative</p> <ul style="list-style-type: none"> - The beach at Snapper rocks is progressively returning following the impacts of TC Alfred. - It has been an ordinary winter for surf. - Lagoon at Kirra has been observed which is not uncommon at Kirra and Greenmount. - Surf at Kirra has been average over the past few months. <p>Jane Lofthouse – NSW LGA AC member</p> <ul style="list-style-type: none"> - JL enquired if there were any locations of A-line seawall exposed following TC Alfred. Councillor Gail O'Neill advised some sections at the north end of the coast were exposed including Narrownneck. Some Lifeguard towers also had to be re-located. - There are continued beach erosion issues at beach accesses especially at Salt and Casuarina. - The Coastal Management Plan for the open Tweed coast is moving to the next stage - options for hazard management will come out for consultation in 2026. - A boat ran aground at Kingscliff beach and had to be removed. - Tweed Council have produced an information sheet detailing erosion and how long sand takes to come back.

TWEED SAND BYPASSING

MEETING NOTES	
Item:	Description
	<p>Adrian Barwick – NSW TSB team member</p> <ul style="list-style-type: none"> - AB noted that the 'Rolling Sets' music festival is planned for late in November at Ebenezer Park. <p>Joshua Taylor - NSW State AC member</p> <ul style="list-style-type: none"> - The lagoon at Kirra has seen high activity for swimmers and families. - JT thanked VMR Point Danger for their call early November regarding a loose component on the TSB jetty that was spotted from the VMR lookout at Point Danger. - TSB would like to thank Tweed Shire Council (project led by Tweed project manager Bryce Robinson) for their efforts in helping deliver a great joint outcome which involved raising Valve Pit 4 at the south end of Durambah and associated footpath works. <p>Chris Mair- Ocean Dive Charters (via email)</p> <ul style="list-style-type: none"> - 'Hi there is still a big sand build up off the south wall and a small build up off the north wall'
3.	<p><u>Project monitoring and operational overview</u></p> <p>Presentation attached.</p>
4.	<p><u>Committee Comments / General Business</u></p> <p>Kim Bowra - NSW TSB Project Director</p> <ul style="list-style-type: none"> - Transport is in talks with Tweed Shire Council and National Parks regarding the potential project to dredge the Tweed River upstream of the entrance. This is planned for the second quarter of 2026. <p>Jane Lofthouse – NSW LGA AC member</p> <ul style="list-style-type: none"> - Presented the Tweed Coastal Hazards study.
	Meeting end: 4:50pm
	Next meeting: February 2026 (TBC)

TWEED SAND BYPASSING

ADVISORY COMMITTEE MEETING

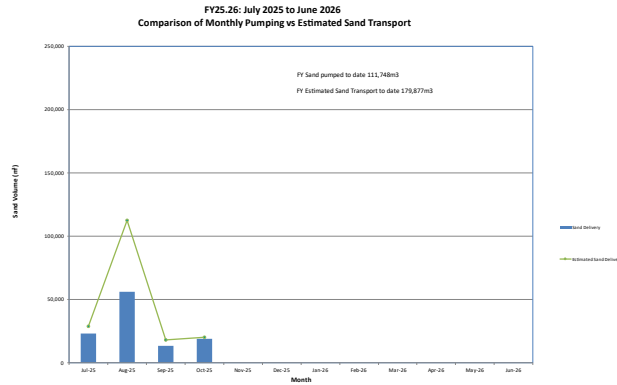
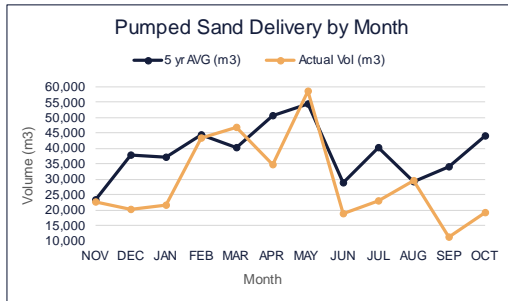
12 November 2025

PROJECT MONITORING AND OPERATIONAL OVERVIEW

- Pumping operations
- Environmental Monitoring / beach observations
- Entrance conditions, usage and survey
- TSB projects and enhancements
- Communications

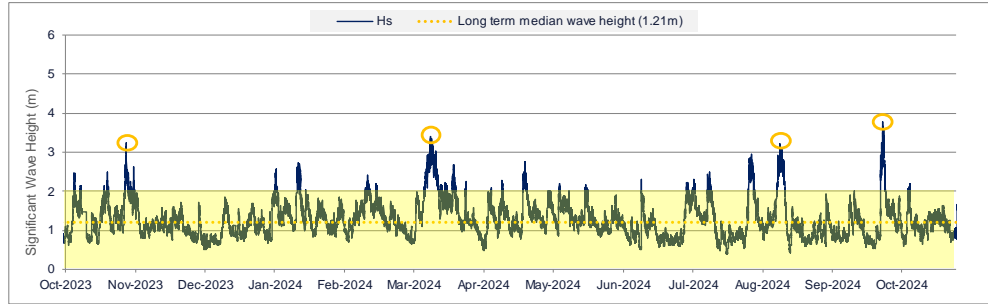


PUMPING



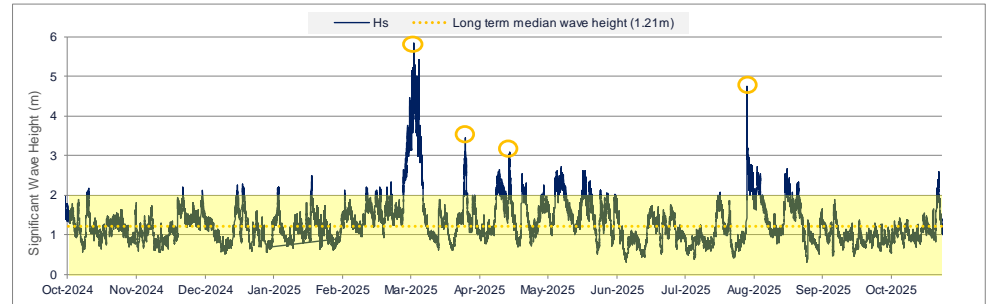
PUMPING BY JETTY MOUNTED SYSTEM FY26					
Year	MONTH	Vol SRE (m3)	Vol D'Bah (m3)	Total Vol (m3)	5 yr AVG (m3)
2025	JUL	23,076	0	23,076	40,363
2025	AUG	29,677	26,404	56,081	29,309
2025	SEP	11,364	2,172	13,537	34,043
2025	OCT	19,055	0	19,055	44,185
2025	NOV			0	24,193
2025	DEC			0	37,216
2026	JAN			0	37,804
2026	FEB			0	49,256
2026	MAR			0	40,867
2026	APR			0	51,570
2026	MAY			0	54,195
2026	JUN			0	20,645
TOTAL		83,172	28,576	111,749	463,647

ENVIRONMENTAL MONITORING / BEACH OBSERVATIONS

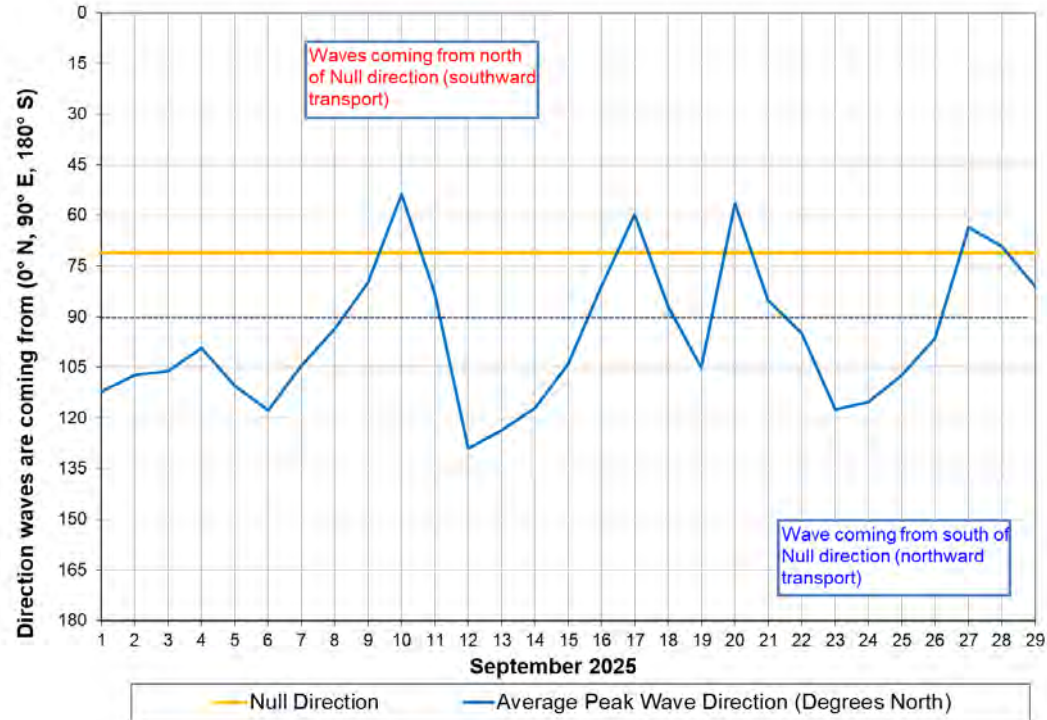


Nov 23 – Oct 24
Estimated transport
 $513,519 \text{ m}^3$

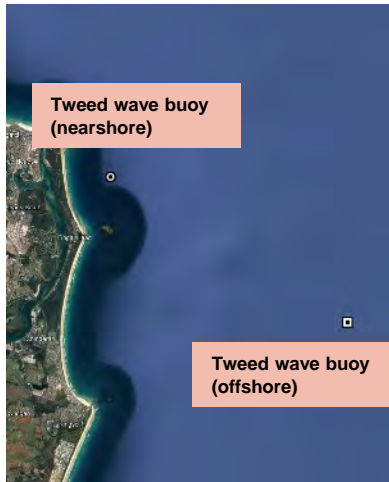
Nov 24 - Oct 25
Estimated transport
 $716,947 \text{ m}^3$
($373,440 \text{ m}^3$
in Mar-May 2025)



ENVIRONMENTAL MONITORING / BEACH OBSERVATIONS



ENVIRONMENTAL MONITORING / BEACH OBSERVATIONS

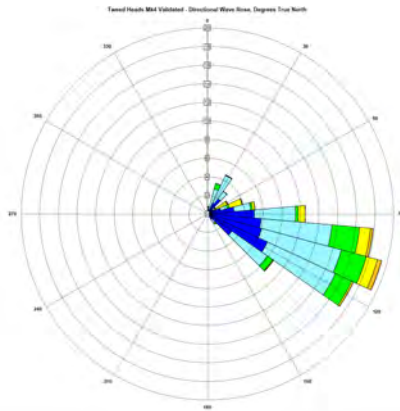


Tweed wave buoy
(nearshore)

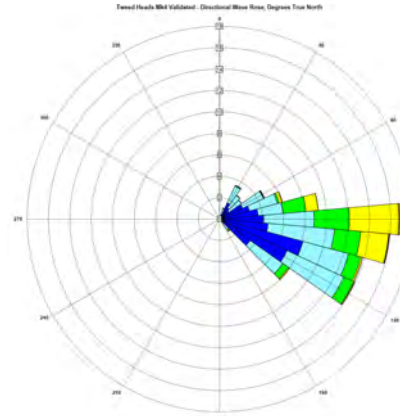
Tweed wave buoy
(offshore)



Tweed wave buoy (nearshore)
1 August – 31 October

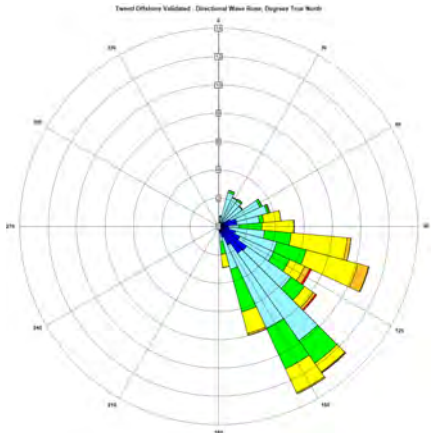


2024



2025

Tweed wave buoy (offshore)
1 August – 31 October



2025

DURANBAH NOURISHMENT - COMPLETE

Location	Volume
South	15,093
Centre	9,234
North	4,249
TOTAL	28,576



Before: 5.08.2025



After: 11.09.2025

DURANBAH PIT RAISING



TWEED SAND BYPASSING

FINGAL



17 April 2025



21 October 2025

TWEED SAND BYPASSING

LETITIA



14 July 2025



21 October 2025

DURANBAH BEACH



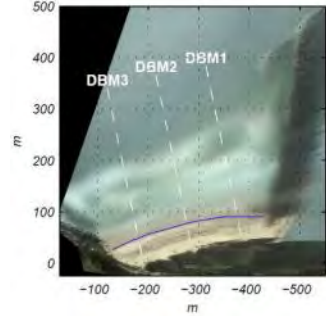
14 July 2025



21 October 2025

TWEED SAND BYPASSING

DURANBAH BEACH



TWEED SAND BYPASSING

SOUTHERN GOLD COAST



14 July 2025



21 October 2025

SNAPPER ROCKS RAINBOW BAY



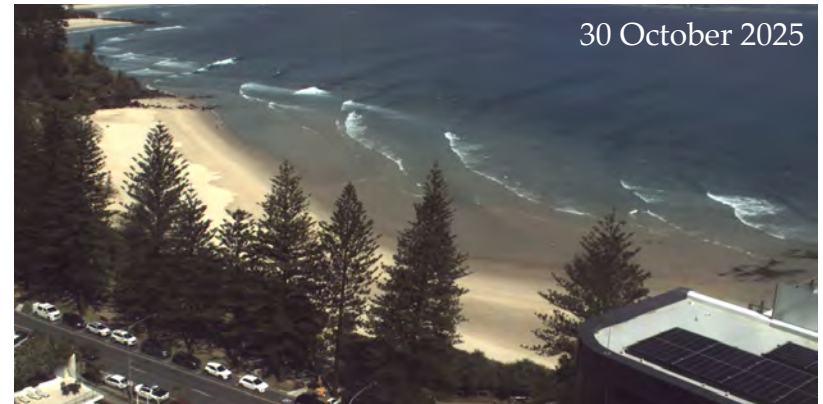
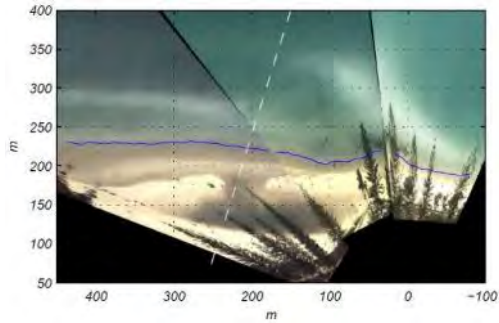
14 July 2025



21 October 2025

TWEED SAND BYPASSING

RAINBOW BAY



TWEED SAND BYPASSING

DOLANGATTA

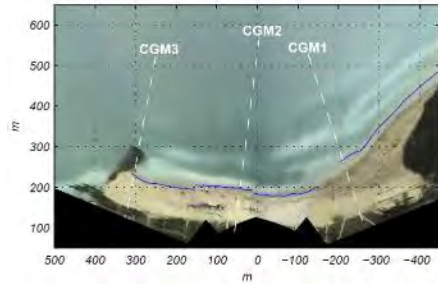
14 July 2025



21 October 2025

TWEEDSAND BYPASSING

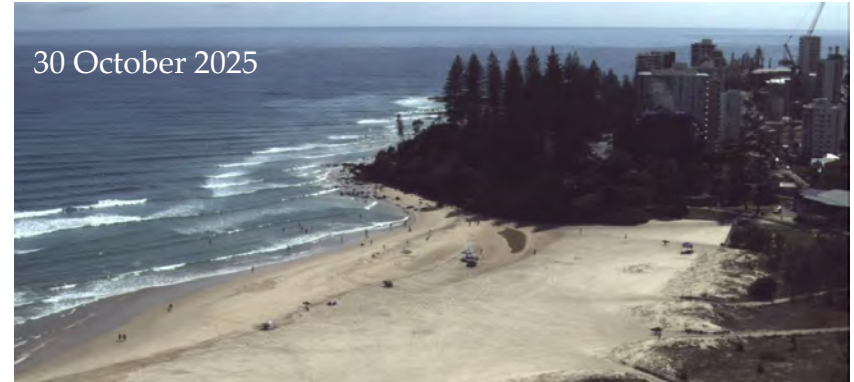
COOLANGATTA



31 July 2025



30 October 2025



TWEED SAND BYPASSING

KIRRA

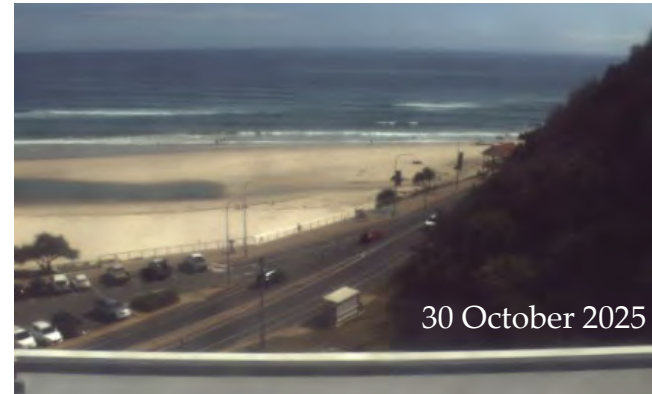
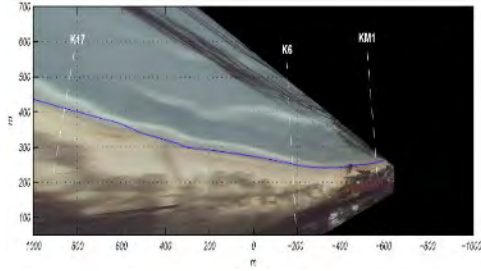


14 July 2025

21 October 2025

TWEED SAND BYPASSING

KIRRA



TWEED SAND BYPASSING

BILINGA



14 July 2025



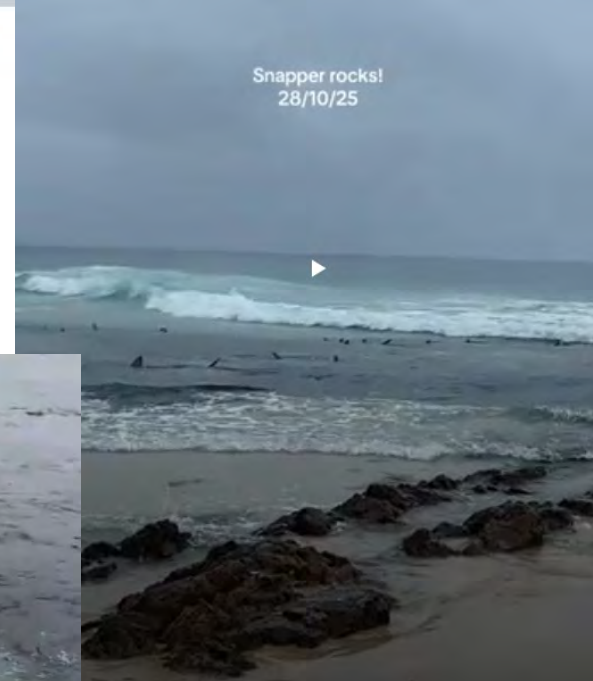
21 October 2025

TWEED SAND BYPASSING

29 October 2025



Snapper rocks!
28/10/25



SURF CONDITIONS – SNAPPER ROCKS

SURF CONDITIONS - DURANBAH

SURFONMARS

12 September 2025

SURFONMARS

15 October 2025

SURFONMARS

15 October 2025

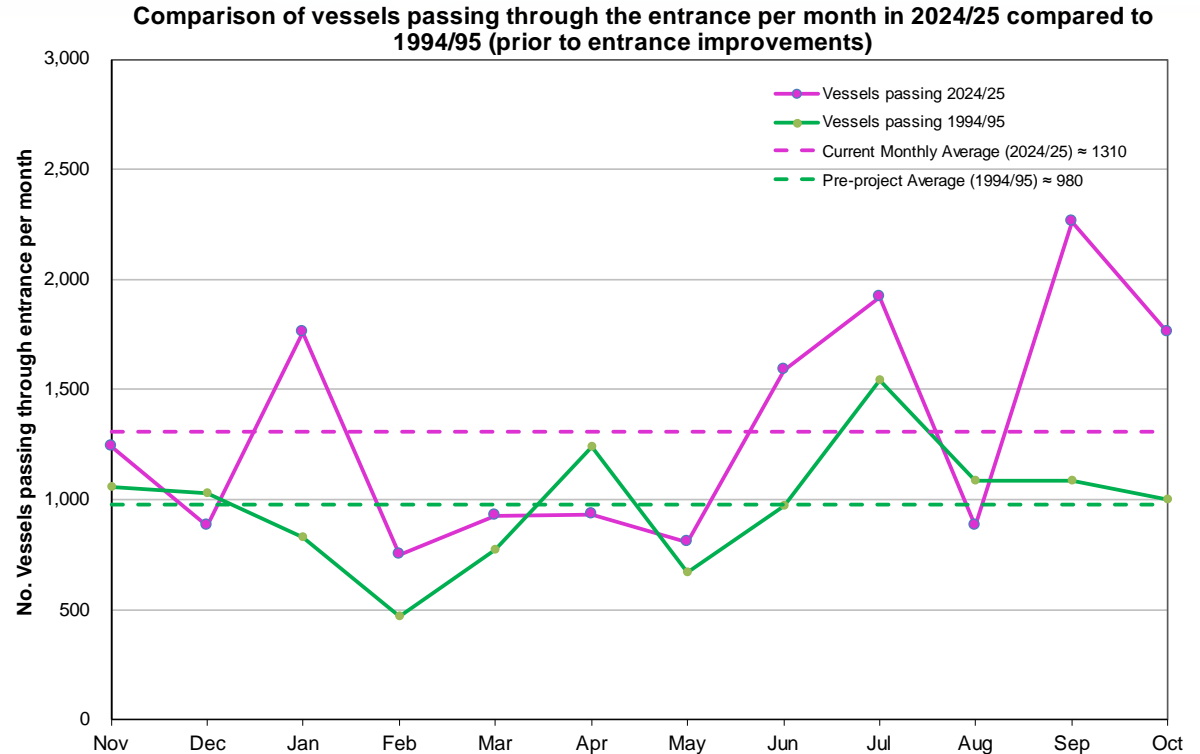
ENTRANCE CONDITIONS, USAGE AND SURVEY



21 October 2025

ENTRANCE USAGE

- Vessel numbers tracking above average between August - October.



ENTRANCE USAGE - AUTOMATED VESSEL COUNT



TWEED SAND BYPASSING

TWEED RIVER ENTRANCE SURVEY

TWEED RIVER ENTRANCE AS AT 15th JULY 2025

WARNINGS: Extreme caution should be used when navigating this entrance.

Changes in bed and channel contours could occur rapidly due to waves and currents.

Entrance users should not rely on this information, as conditions may have changed since the date of this survey.

Seabed contours show average depths in metres below the Lowest Astronomical Tide (approx ISLW), not clearance depths.



NOTES:

1. Survey information collected by Michel Group Services on 8th, 9th & 15th JULY 2025.
2. This plan prepared by Michel Group Services on 31st JULY 2025.
3. Surveys are undertaken for Tweed Sand Bypassing every three months to monitor entrance seabed levels.



Transport
for NSW

TWEED SAND BYPASSING
Tweed Sand bypassing is a joint project of the New South Wales and Queensland Governments, with the support of the Gold Coast City Council, and in conjunction with Tweed Shire Council.



Meters
0 50 100 150 200

TWEED RIVER ENTRANCE AS AT 13th OCTOBER 2025

WARNINGS: Extreme caution should be used when navigating this entrance.

Changes in bed and channel contours could occur rapidly due to waves and currents.

Entrance users should not rely on this information, as conditions may have changed since the date of this survey.

Seabed contours show average depths in metres below the Lowest Astronomical Tide (approx ISLW), not clearance depths.



NOTES:

1. Survey information collected by Michel Group Services on 18th OCTOBER 2025.
2. This plan prepared by Michel Group Services on 23rd OCTOBER 2025.
3. Surveys are undertaken for Tweed Sand Bypassing every three months to monitor entrance seabed levels.



Transport
for NSW

TWEED SAND BYPASSING
Tweed Sand bypassing is a joint project of the New South Wales and Queensland Governments, with the support of the Gold Coast City Council, and in conjunction with Tweed Shire Council.



Meters
0 50 100 150 200

PROJECTS AND ENHANCEMENTS

High Pressure pump

Delivery of new high-pressure pump expected in December 2025.

Access to Letitia compound

Northern and Southern accesses to compound refurbished. Entry gates and parking restrictions installed.

Dredging 2025

Dredging contract expected to be awarded within the next week. Commencement date being determined.

Jet Pump Replacement

Planning underway to replace all existing jet pumps due to end of design life.

Letitia beach width monitoring

Options being investigated for monitoring of beach width on Letitia.

Environmental monitoring
initiatives

Automated vessel count data being collected and validated against manual counts. Shorebird monitoring commenced. Seagrass monitoring at Cook Island in November 2025.

COMMUNICATIONS AND ENGAGEMENT

TSB attended the 2025 NSW Coastal Conference from 5-7 November in Ballina.

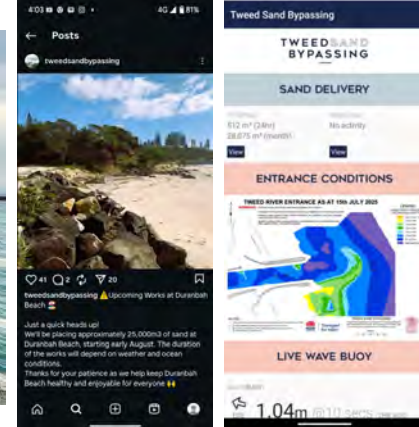
Signage and access improvements at Sand Pumping Facility

Jetty tour conducted for various school groups and a delegation from Vietnam.

Routine App and website maintenance. Duranbah Instagram posts.

Community survey planned for later in FY2026

Abstract submitted for the World Surfing Conservation Conference 2026



TWEED SAND BYPASSING

THANK YOU

- TSB is a joint coastal management initiative of the New South Wales and Queensland State Governments
- Please provide any feedback to the TSB Project Office email TSB@transport.nsw.gov.au